

R.P.O. Vol. 216 Fol. 603

C.T. Vol. 4416 Fol. 471

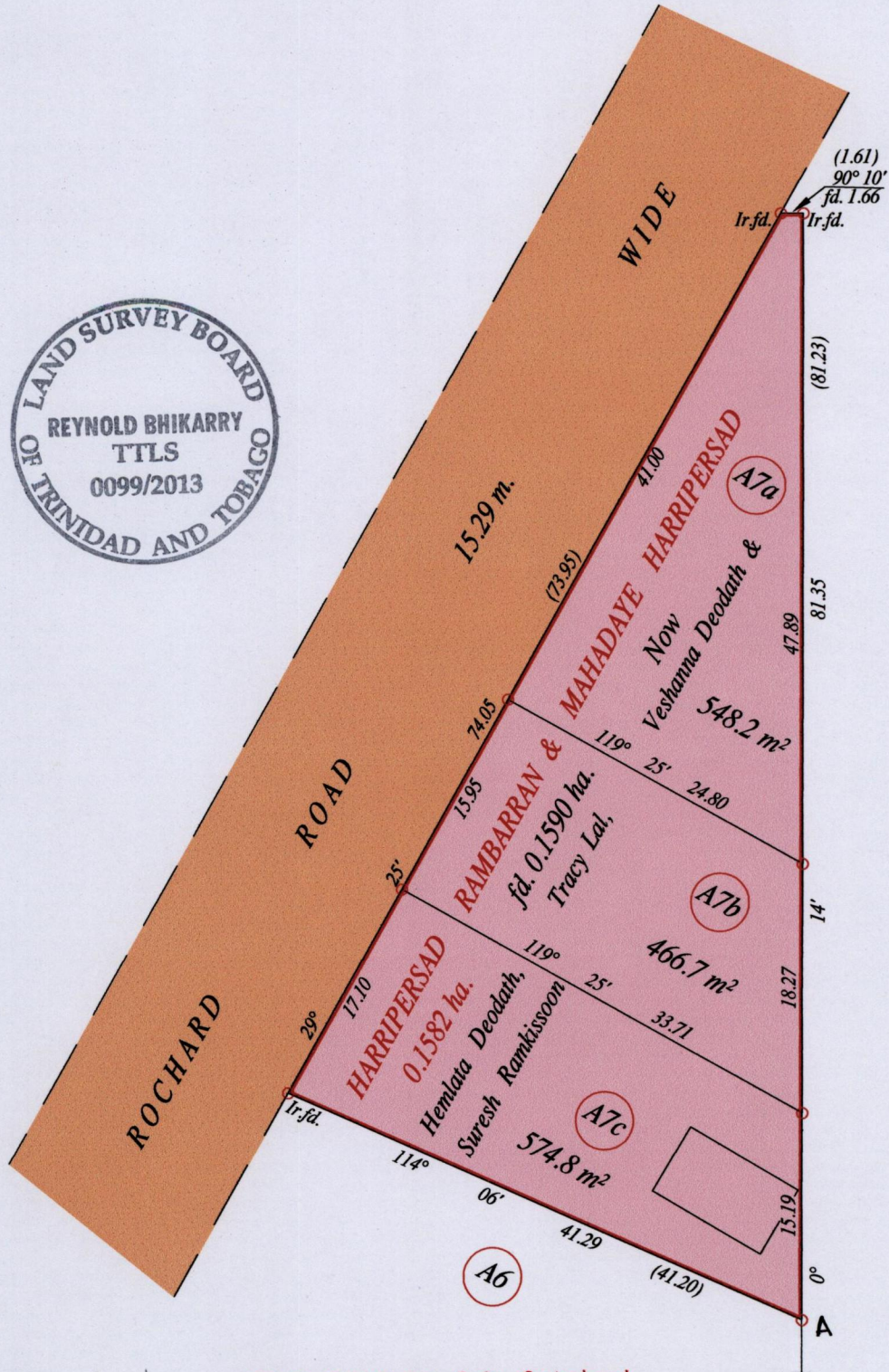
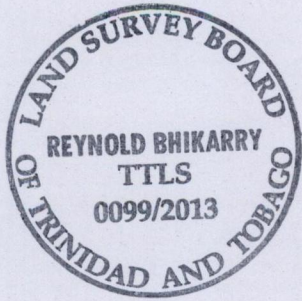
Process ID # G514G

Ward of Siparia

County of St. Patrick

Cadastral Sheet G 18 D, 73 C  
2/b

ROCHARD ROAD PENAL



STATE

Orig

Vide Bk. 1273 fol. 134 → for Original

Approved

*[Signature]*  
Director of Surveys 2/1/14

At station (A)  
E: 673208 N: 1121048  
Coordinate was obtained  
from Hand Held GPS.  
Naparima Datum (+/-10m)  
UTM Zone 20.

○ Denotes Iron put except stated otherwise.

SCALE : 1:500

Note: Bearings are Cassini grid based on solar observations

Distances are in metres

PLAN of 3 Parcels of land coloured pink in the Ward of Siparia

Containing together one thousand five hundred and eighty nine point seven square metres

Surveyed by me, with due authority, in January 2012

Certified correct in accordance with Regulation 25 (1) of the Land Surveyors' Regulations 1998.

Checked by

*[Signature]*

Entered on

Trinidad & Tobago Land Surveyor

5th March 2013