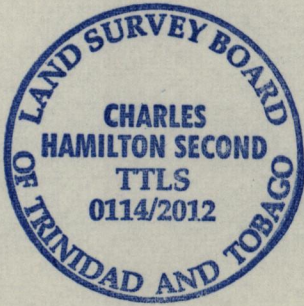


1654

24

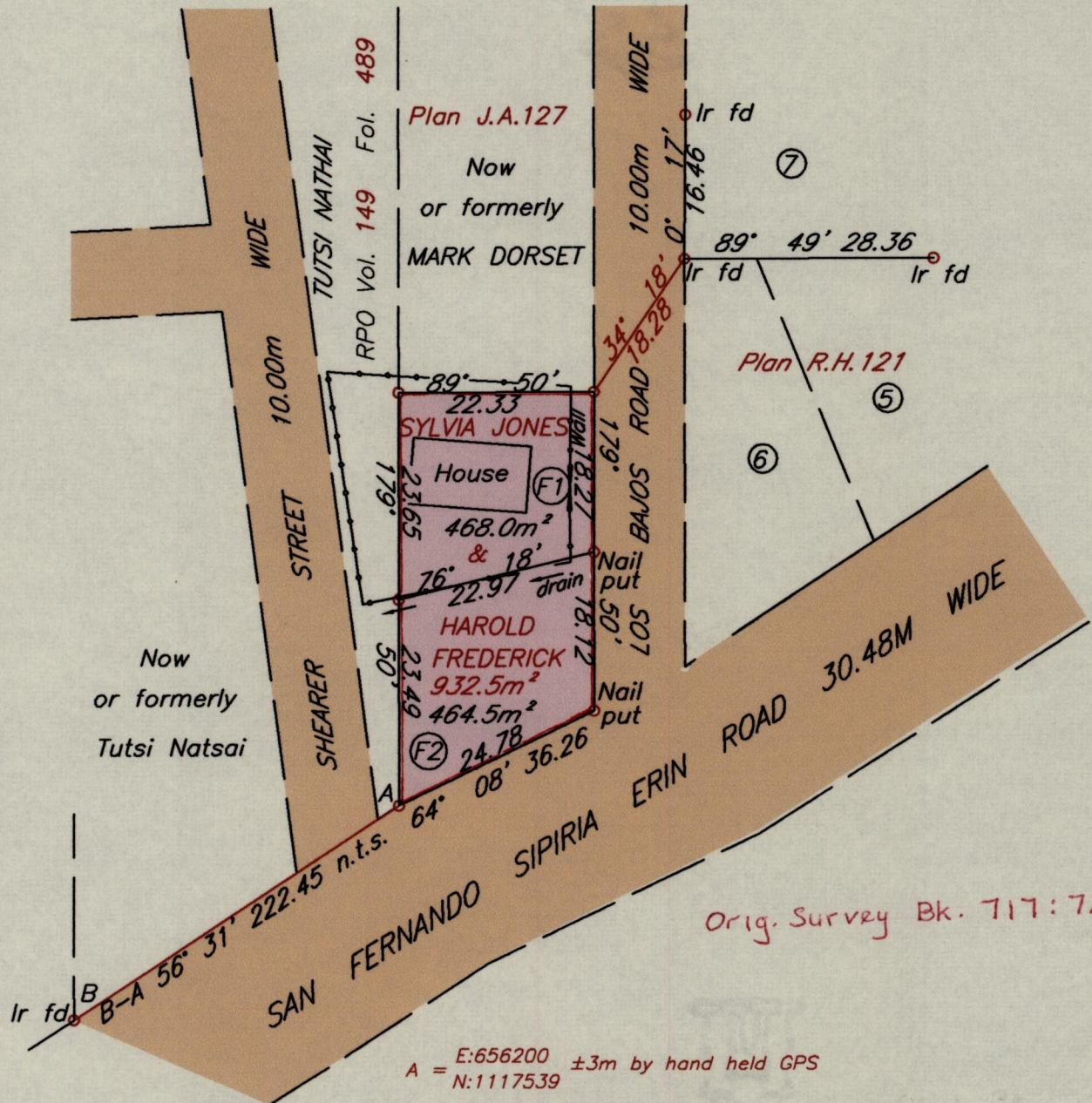
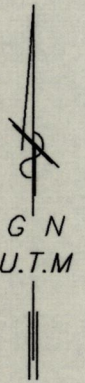
Process ID # 79581
C.T. Vol. 5068 Fol. 37

Cadastral Sheet 72C
4/c, G.16.K.
Ward of Erin
County of St. Patrick



LOS BAJOS

References:
Plan J.A.125
Plan R.H.153
Plan P.C.66



Orig. Survey Bk. 717:72

A = E:656200 ±3m by hand held GPS
N:1117539
UTM Zone 20
Naparima Datum

Approved

Director of Surveys 3/1/14

To obtain Cassini bearings add 18 minutes
○ Denotes Iron put unless otherwise stated
Bearings are U.T.M. Grid based on solar observations.

— Chain Link Fence

SCALE 1:750

Distances are in metres

PLAN of two Parcels of land coloured pink in the Ward of Erin
Containing together nine hundred and thirty two point five square metres
Surveyed by me, with due authority, in November 2010
Certified correct in accordance with Regulation 25 (1) of the Land Surveyors
Regulations 1998,

Checked by

Charles H. Second T.T.L.S.

Entered on

Trinidad & Tobago 24th June 2013
Land Surveyor