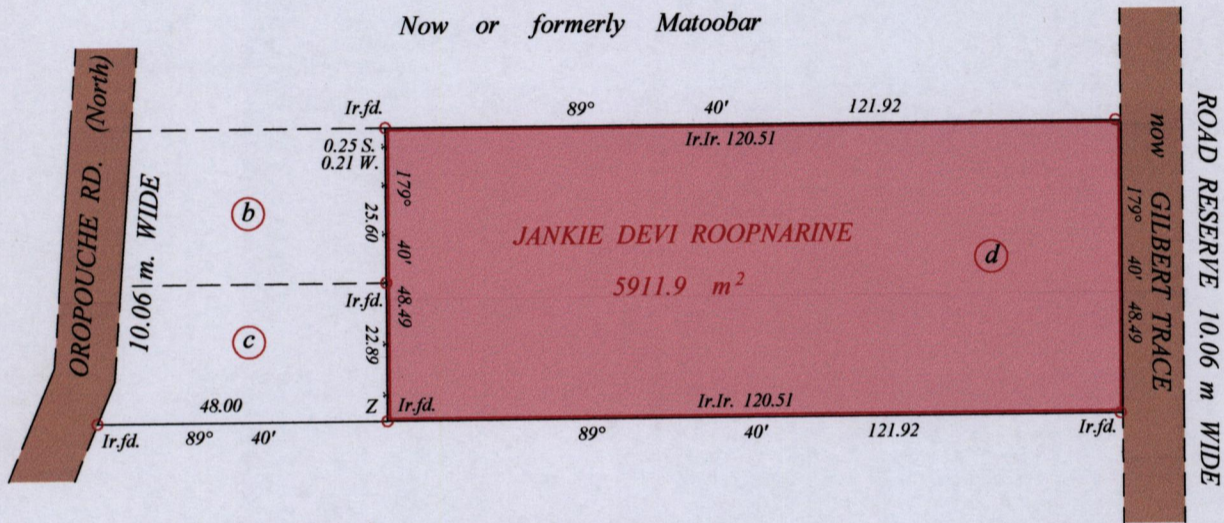
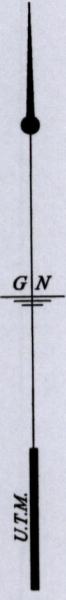


1654

224

R.P.O. Vol. 24 fol. 537
C.T. Vol. 3115 fol. 177

Ward of Savana Grande
County of Victoria
Cadastral Sheet G. 9 0. $\frac{64A}{4/d}$



Parcel 2



Orig Bk 1157 fol. 192

Z = N. 1127964 E 678953
U.T.M. Zone 20 Naparima +/- 5.00 m
Hand Held G.P.S.

Bk. 1103 fol. 178
unreg. subdiv. Bk. 1135 fol. 550

○ Denotes Iron Put Except
Otherwise Stated

Approved *[Signature]*
Director of Surveys 20/6/14

SCALE : 1 : 1250

Note: Bearings are U.T.M. grid based on solar observations Distances are in metres
PLAN of a Parcel of land coloured pink in the Ward of Savana Grande
Containing five thousand nine hundred and eleven point nine square metres
Surveyed by me, with due authority, in January 2014
Certified Correct in accordance with Regulation 25 (1) of the Land Surveyors
Regulations 1998.

Checked by *[Signature]*

Entered on Trinidad & Tobago Land Surveyor 09th April 2014