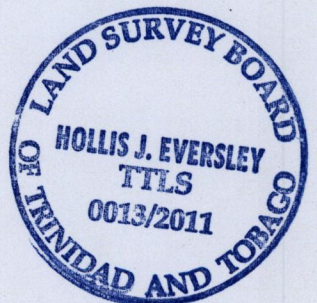
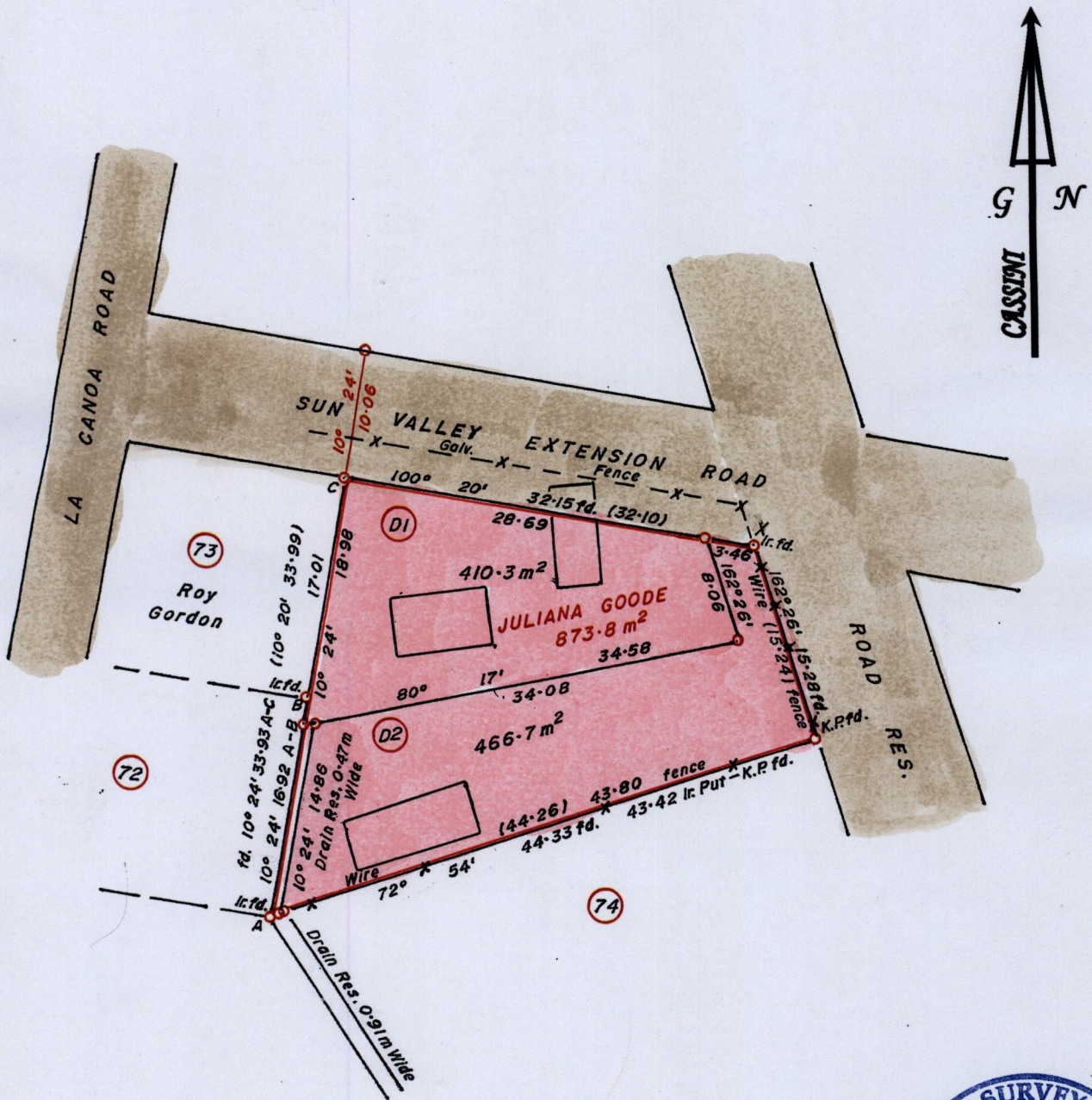


1654

216

R.P.O Vol. 7 Fol. 125
C.T. Vol. 4268 Fol. 231

Ward of St. Anns.
County of St. George.
Cadastral Sheet G.17.B&F. 13F
3/a



X
1180698 m N, 669471 m E.
U.T.M.20, WGS 84 (+/-5.0m)
GPS Handheld Direct Obs.

Original Survey in Plan P.A.7.

Plan D.K. 71.
Plan P.A. 7.

SCALE 1 : 500.

Distances are in METRES

Approved.....
Director of surveys 23/6/14

Bearings are Cassini Grid based on Solar Observations.
Note : To obtain compass bearings add/subtract 00 minutes.

PLAN of 2 Parcels of land coloured PINK in the Ward of St. Anns
Containing together eight hundred and seventy seven square metres.
Surveyed by me, with due authority, in April 2008.
Certified correct in accordance with Regulation 25(1) of the Land Surveyors' Regulations 1998,

Checked by

Entered

Trinidad and Tobago Land Surveyor..... 2011.