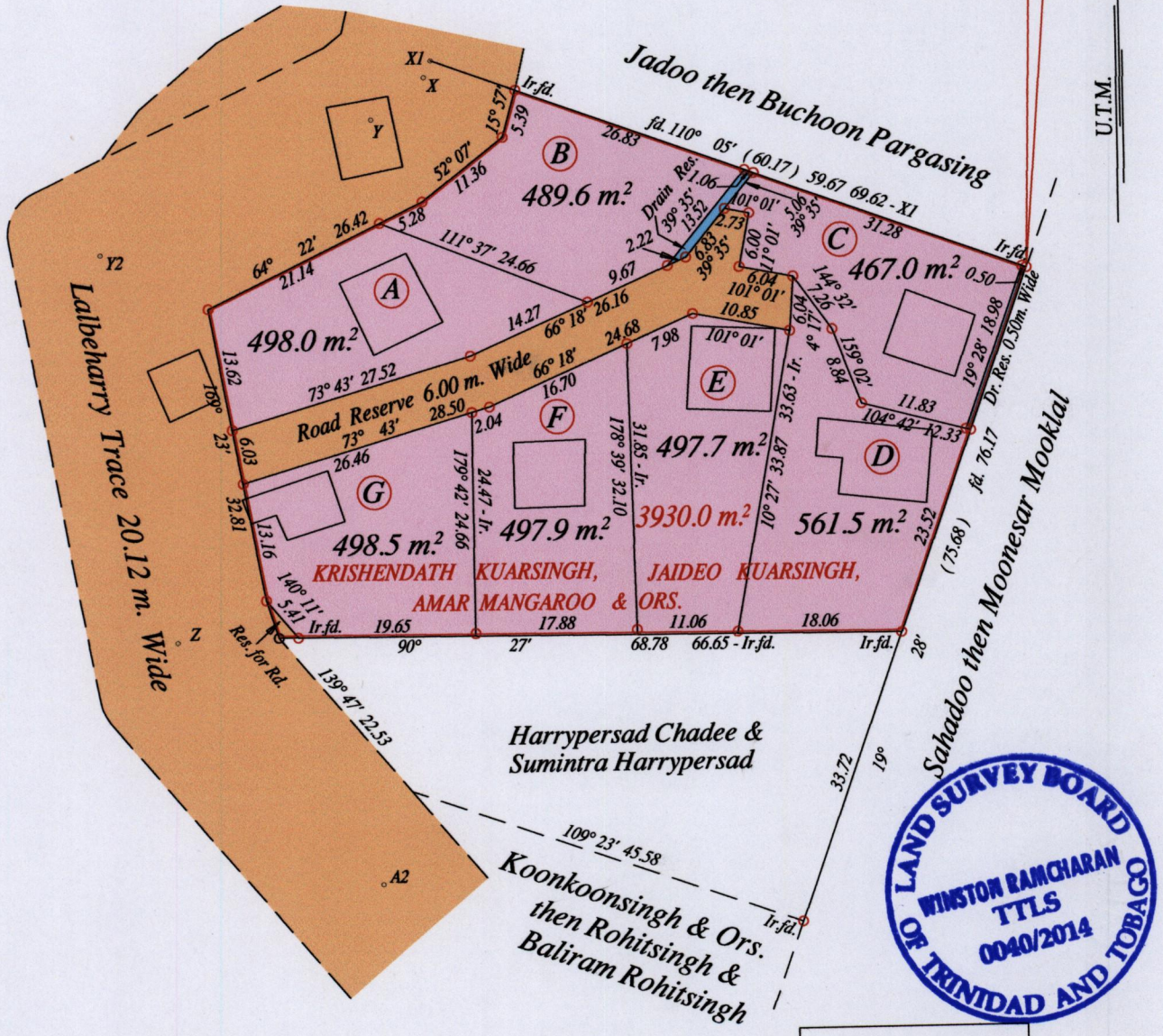


R.P.O. Vol. 7 Fol. 603  
C.T. Vol. 5531 Fol. 37

Ward of Naparima  
County of Victoria  
Cadastral Sheet G 8 O & G 13 C,  $\frac{63 C}{31d}$

N: 1127788  
E: 670613  
Hand Held GPS.  
Naparima Datum (+/-5m)  
UTM Zone 20.



original survey 1200 fol 31

X1 - X	22° 52' 2.01
X - Y	52° 07' 7.44
Y - Y2	64° 22' 33.39
Y2 - Z	169° 22' 43.65
Z - A2	140° 20' 35.10

Approved *[Signature]*  
Director of Surveys 11/6/14

Vide Bk. 1200 fol. 31  
Vide Bk. 1179 fol. 38  
Vide Bk. 1003 fol. 146

o Denotes Iron put except stated otherwise.  
Note: Bearings are U.T.M. grid based on solar observations Distances are in metres  
PLAN of 7 Parcels of land coloured pink in the Ward of Naparima  
Containing together three thousand five hundred and ten point two square metres  
Surveyed by me, with due authority, in January 2013  
Certified correct in accordance with Regulation 25 (1) of the Land Surveyors' Regulations 1998.

Checked by *[Signature]*  
Entered on ..... Trinidad & Tobago Land Surveyor 22nd April 2014