

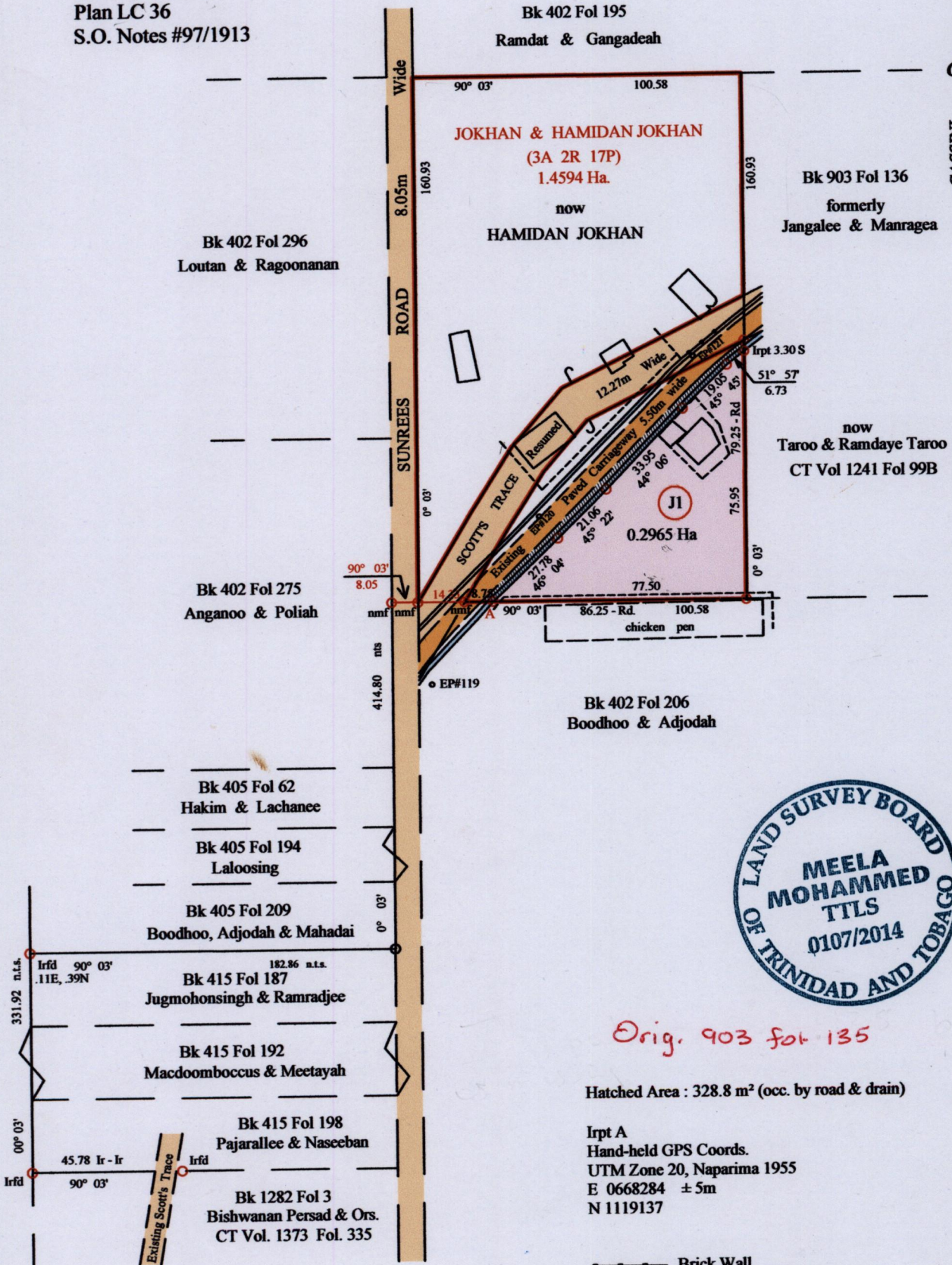
1654

210

RPO Vol 173 Fol 29
CT Vol 4705 Fol 69

Cadastral Sheet G.18.E., 73B
County of St. Patrick 4/b
Ward of Siparia
PENAL

Refs. : Bk 903 Fol 135, 136
Bk 402 Fol 201
Plan LC 36
S.O. Notes #97/1913



Orig. 903 fol 135

Hatched Area : 328.8 m² (occ. by road & drain)

Irpt A
Hand-held GPS Coords.
UTM Zone 20, Naparima 1955
E 0668284 ± 5m
N 1119137

- Brick Wall
- - - C/L wire fence

○ denotes Iron Put except otherwise stated
Bearings are Cassini Grid based on Solar Obs.
Distances are in Metres
SCALE 1/1750

Approved
[Signature]
Director of Surveys *[Signature]*

PLAN of a parcel of land coloured pink in the Ward of Siparia
Containing zero point two nine six five Hectare
Surveyed by me, with due authority, in May 2013.
Certified correct in accordance with Regulation 25 (1) of the Land Surveyors' Regulations 1998.

Checked by
Entered on
Meela Mohammed
Trinidad and Tobago Land Surveyor
15th. May 2014