

1054

2006

U.P.R.N.....

R.P.O. Vol. 202 Fol. 553

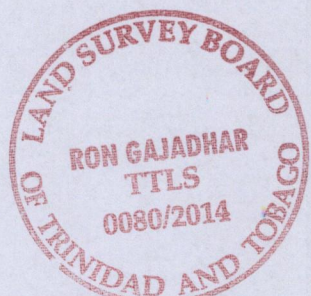
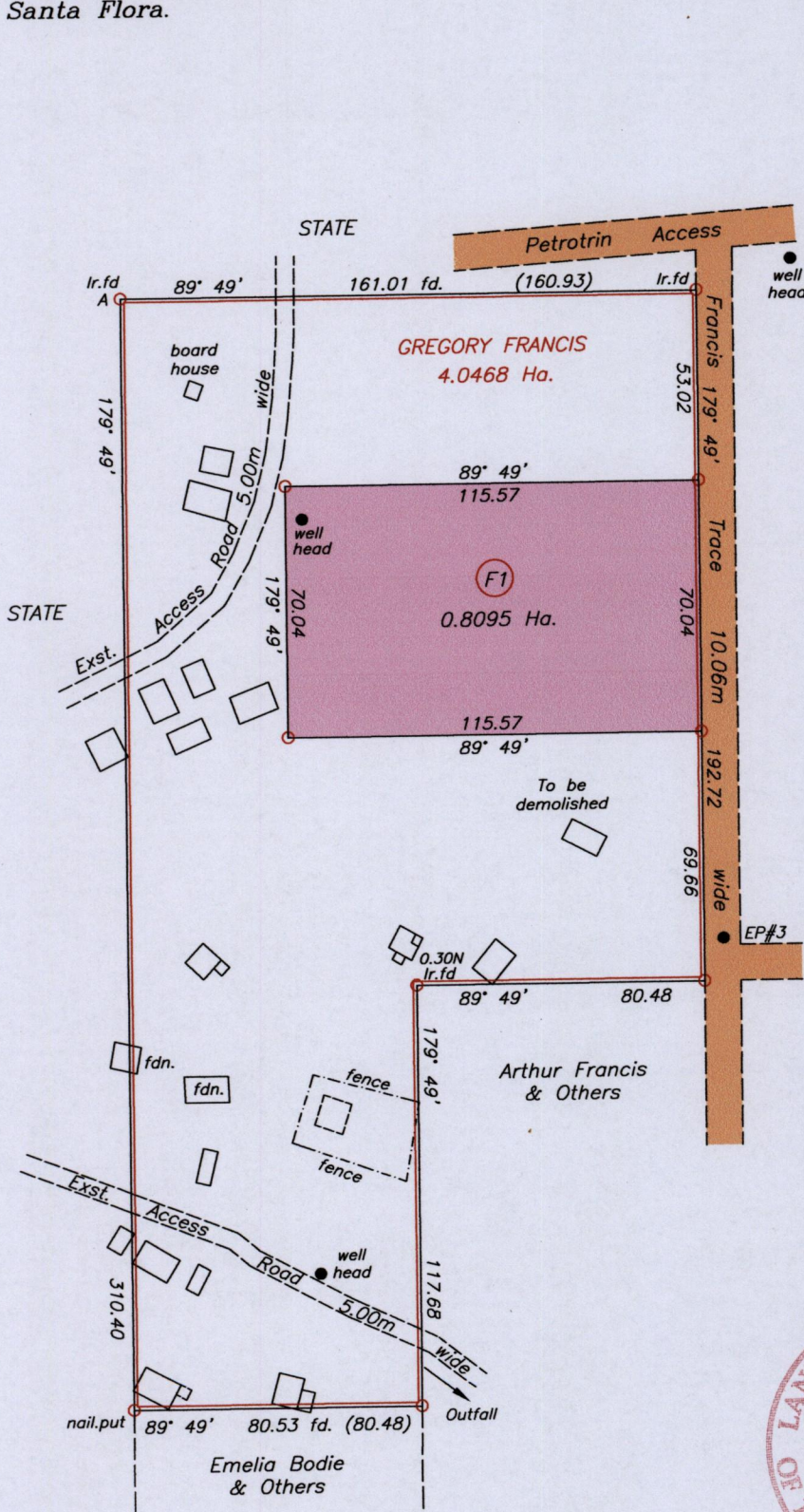
C.T. Vol. 4176 Fol. 97

Address - EP#3 Francis Trace, Santa Flora.

Ward of Erin

County of St. Patrick

Cadastral Sheet G.16.H. 73A 1/c



Approved.....  
 Director of Surveys *[Signature]* c/16/14

Orig 483 fol. 98

Note - UTM (Nap-Zone 20) Coordinates obtained from hand held GPS receiver + 5.00m

A = 657919 E N (U.T.M)  
 1118937

o Denotes Iron put except stated otherwise  
 Note: Bearings are U.T.M. grid based on solar observations

Ref :- Bk.483 Fol.98  
 SCALE 1:2000  
 Distances are in metres

Plan of a Parcel of land coloured pink in the Ward of Erin. Containing zero point eight zero nine five hectares. Surveyed by me, with due authority, in February 2013. Certified correct in accordance with Regulation 25(1) of the Land Surveyors' Regulations 1998.

Checked by *[Signature]* 28/5/2014

.....  
*[Signature]*

Entered on.....

Trinidad & Tobago Land Surveyor..... 14.04.2014

L.S.