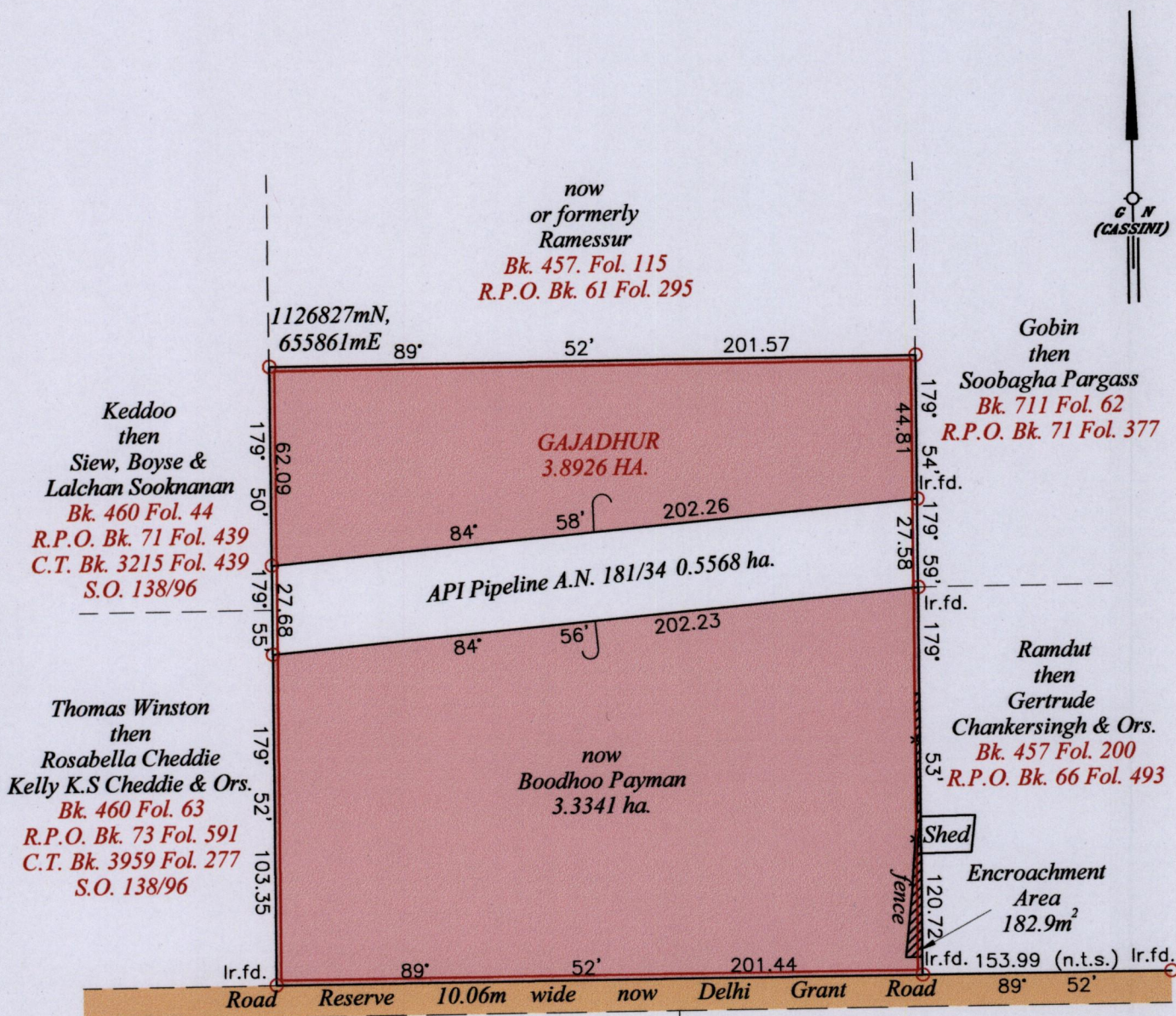


1654⁰⁵

2015

R.P.O. Vol. 86 Fol. 215
C.T. Vol. Fol.

Ward of La Brea
County of St. Patrick
Cadastral Sheet G.11.B & C., $\frac{62F}{2/a}$



Approved

[Signature]
Director of Surveys 23/6/14

○ Denotes Iron put except stated otherwise.
Bearings are Cassini Grid based on Solar Observations
Plan of a Parcel of land coloured pink in the Ward of La Brea.
Containing three point three three four one hectares.
Surveyed by me, with due authority, in June 2013
Certified correct in accordance with Regulation 25(1) of the Land Surveyors' Regulations 1998,

Checked by.....

Entered on Trinidad & Tobago Land Surveyor..... 17th June 2014

then Gertrude Chankersingh & Ors.
Bk. 460 Fol. 49
R.P.O. Bk. 71 Fol. 403
Coordinate was obtained from Hand Held GPS.
Naparima Datum (+/-5m)
UTM Zone 20.
SCALE 1:2,000
Distances are in metres
Ref: - Bk. 1243 Fol. 100
Orig 460 fol. 162