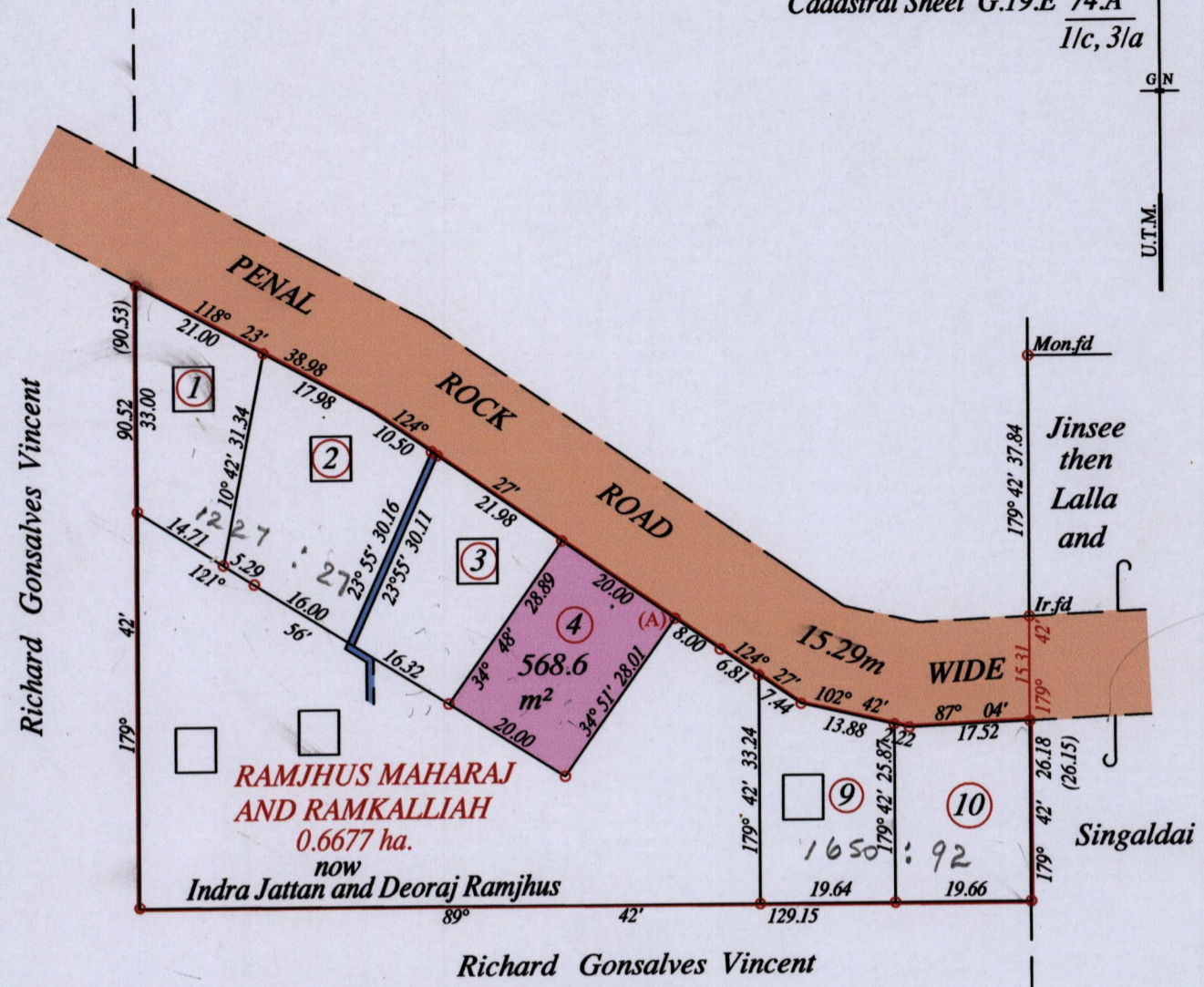


1654

204

R.P.O. Vol. 152 Fol. 137
C.T. Vol. 1193 Fol. 153

Ward of Siparia
County of St. Patrick
Cadastral Sheet G.19.E 74.A
1/c, 3/a



- ① C.T. Vol. 3748 Fol. 247
- ② C.T. Vol. 4668 Fol. 141
- ③ C.T. Vol. 3748 Fol. 255
- ⑨ C.T. Vol. 5478 Fol. 411
- ⑩ C.T. Vol. 5478 Fol. 419



Vide Bk. 1650 fol. 92
Vide Bk. 897 fol. 13
Vide Bk. 923 fol. 237

At Station (A)
E 0674868
N 1119211
Reading taken with
Handheld G.P.S.
U.T.M. Zone 20
Naparima
+ 10 m.

Approved *[Signature]*
Director of Surveys *[Signature]*

orig Bk 897 fol. 13

SCALE : 1:1000

o Denotes Iron put except stated otherwise.

Distances are in metres

Note: Bearings are U.T.M. grid based on solar observations

PLAN of a Parcel of land coloured pink in the Ward of Siparia
Containing five hundred and sixty eight point six square metres
Surveyed by me, with due authority, in September 2008

Certified Correct in accordance with Regulation 25(1) of the Land Surveyors Regulations 1998

Checked by *[Signature]* 29/07/2014

[Signature]

Entered on Trinidad & Tobago Land Surveyor 17.07.2014