

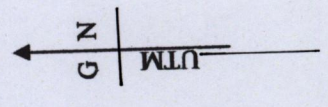
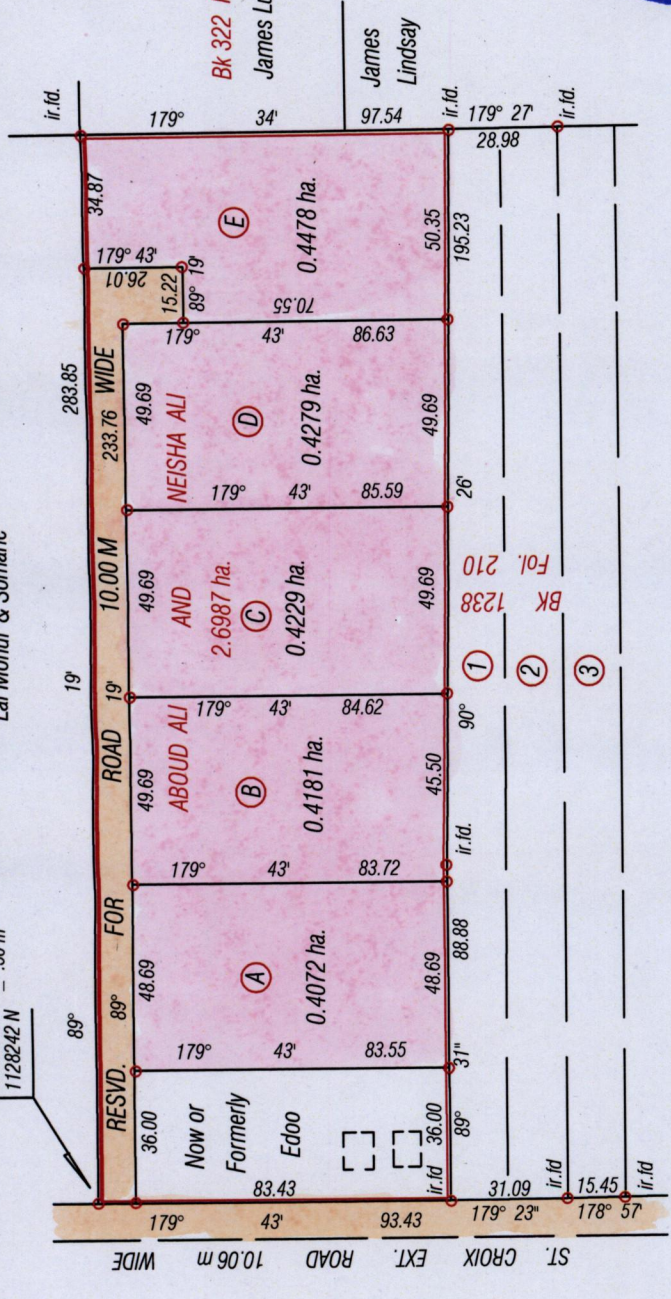
RPO . Vol 34 Fol. 69  
 CT. Vol. 5105 Fol. 267

Bk. 323 Fol. 222

Ward of Siavana Grande  
 County of Victoria  
 Cadastral Sheet G 9 0 64 A  
 4/c

Bk. 711 Fol. 111  
 Lal Mohur & Somarie

UTM Zone 20 (Nap)  
 Hand held GPS  
 0678133 E ± .50 m  
 1128242 N



Original BK 323 fol. 222

Approved.....  
 Director of Surveys

Bearings are UTM Grid based on Solar Obs.  
 Denotes iron pit except otherwise stated

SCALE 1: 2000  
 Distances are in metres

PLAN of 5 Parcels of land coloured Pink in the Ward of Savana Grande  
 Containing two point one two three nine hectares  
 Surveyed by me, with due authority, in November 2013  
 Certified Correct in accordance with Regulation 25 (1) of the Land Surveyors' Regulations 1998,

Checked by.....  
 Entered.....  
 5<sup>th</sup> May 2014  
 Trinidad and Tobago Land Surveyor

1654

2013