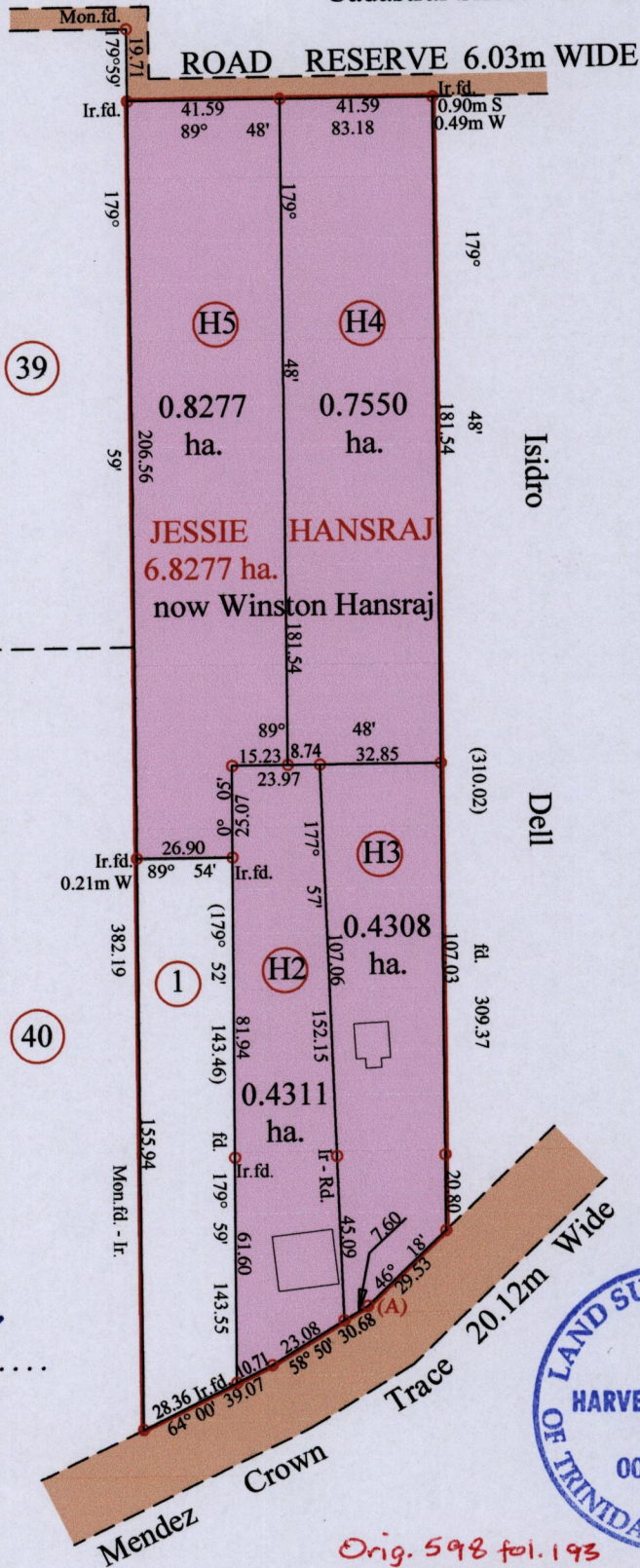


R.P.O. Vol. 599 Fol. 431
C.T. Vol. 4164 Fol. 265

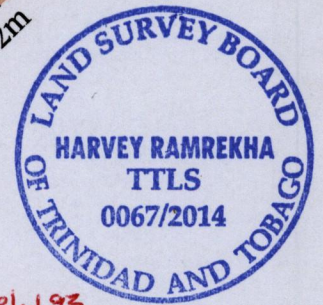
Ward of Siparia
County of St. Patrick
Cadastral Sheet G.17.O 73 B
3/d



Station (A)
E 0665106
N 1116939
Reading taken with
Handheld G.P.S.
Garmin 76S
U.T.M. Zone 20
Naparima
±5m

Approved

Director of Surveys



Orig. 598 fol. 193
Vide Bk. 598 fol. 193

SCALE : 1:2000

○ Denotes Iron Put except stated otherwise.

Note: Bearings are U.T.M. grid based on solar observations Distances are in metres

PLAN of 4 Parcels of land colored pink in the Ward of Siparia
Containing together two point four four four six hectares
Surveyed by me, with due authority, in February 2013
Certified Correct in accordance with Regulation 25 (1) of the Land Surveyors' Regulations 1998,

Checked by

Entered on Trinidad & Tobago Land Surveyor (TTLS) 17-04-2014