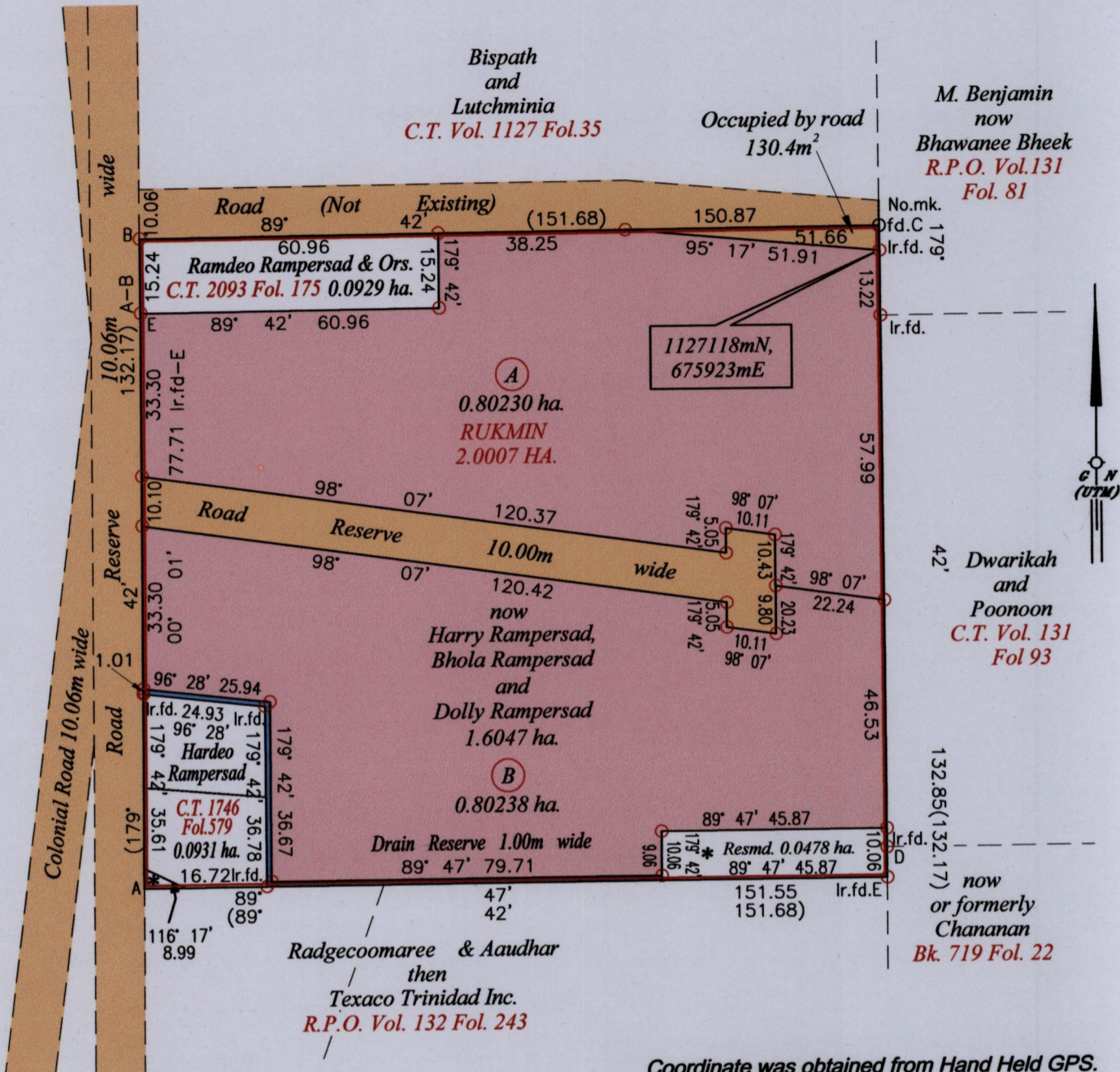


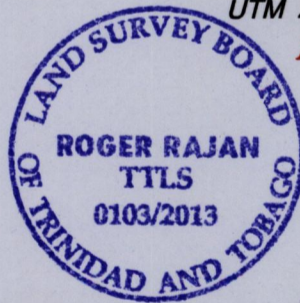
R.P.O. Vol. 131 Fol. 85  
C.T. Vol. 1430 Fol. 315

Ward of Naparima  
County of Victoria  
Cadastral Sheet G.14.A & B., 64D  
1/a



LEGEND		
LINE	BEARING	DISTANCE
C-lr.fd.	179° 42'	5.05
lr.fd.E-lr.fd.D	179° 42'	6.20

Coordinate was obtained from Hand Held GPS.  
Naparima Datum (+/-5m)  
UTM Zone 20.



Ref: Bk. 999 Fol. 02  
Bk. 1052 Fol. 145  
Bk. 969 Fol. 52  
Bk. 1117 Fol. 146 - Original  
Bk. 1282 Fol. 216

Approved .....  
Director of Surveys 21/12/13

SCALE 1:1,250  
Distances are in metres

○ Denotes Iron put except stated otherwise.  
Bearings are UTM Grid based on Solar Observations  
Plan of two (2) Parcel of land coloured pink in the Ward of Naparima.  
Containing together one point six zero four seven hectares.  
Surveyed by me, with due authority, in March 2012  
Certified correct in accordance with Regulation 25(1) of the Land Surveyors' Regulations 1998,

Checked by.....

.....

Entered on ..... Trinidad & Tobago Land Surveyor..... 05<sup>th</sup> December 2013