

1654

1888

R.P.O. Vol. 79 Fol. 589

C.T. Vol. 1903 Fol. 351

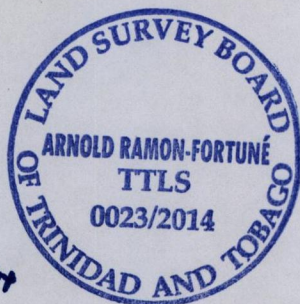
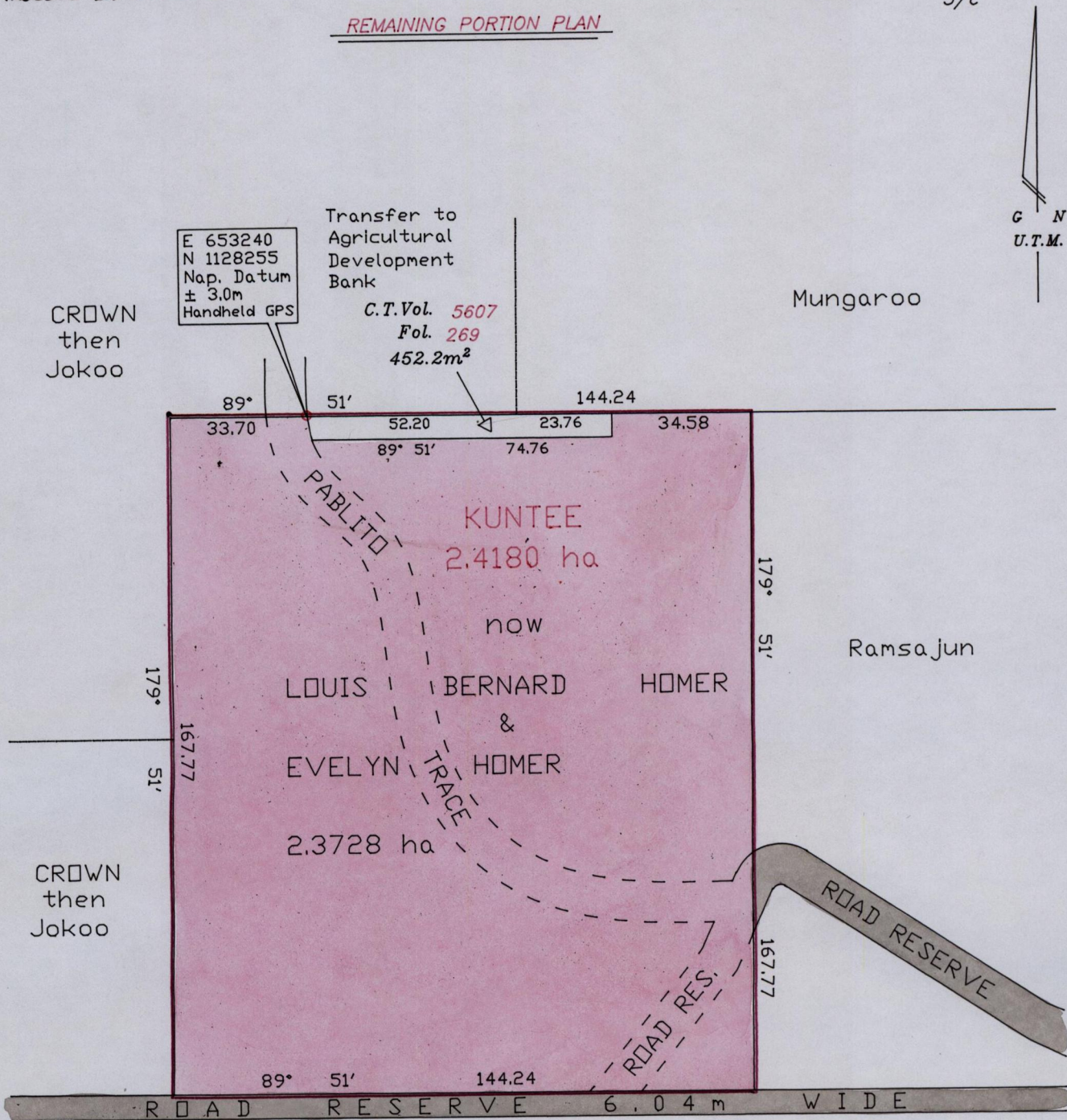
Process ID # 86286

Ward of La Brea

County of St. Patrick

Cadastral Sheet G.6.M. 62C/3/c

REMAINING PORTION PLAN



c.f. L&S. Bk. 1652 Fol. 144

Orig Bk 459 fol. 69

Orig survey bk 451: 69

Approved

[Signature]

Director of Surveys ~16/14

SCALE 1/1500

Note: To obtain Cassini Grid add 18 minutes

Distances are in metres

PLAN of two point four one eight zero hectares originally transferred to Kuntee showing a portion coloured pink and containing two point three seven two eight hectares being the remainder after one previous transfer of another portion of land

In accordance with Regulation 25(1) of the Land Surveyors Regulations 1998, I certify that this plan represents the remaining portion.

Checked by.....

Arnold A.S. Ramon-Fortune

Entered.....

Trinidad & Tobago Land Surveyor.....

29/10 APR 12 2014