

UPRN No.

Cadastral Sheet G.13. J. K. $\frac{63 F}{3/b}$

R.P.O. Vol. 77 Fol 243

Ward of Siparia

C.T Vol. 5018 Fol 333

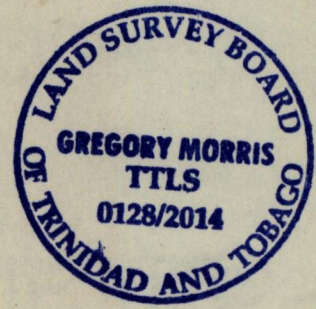
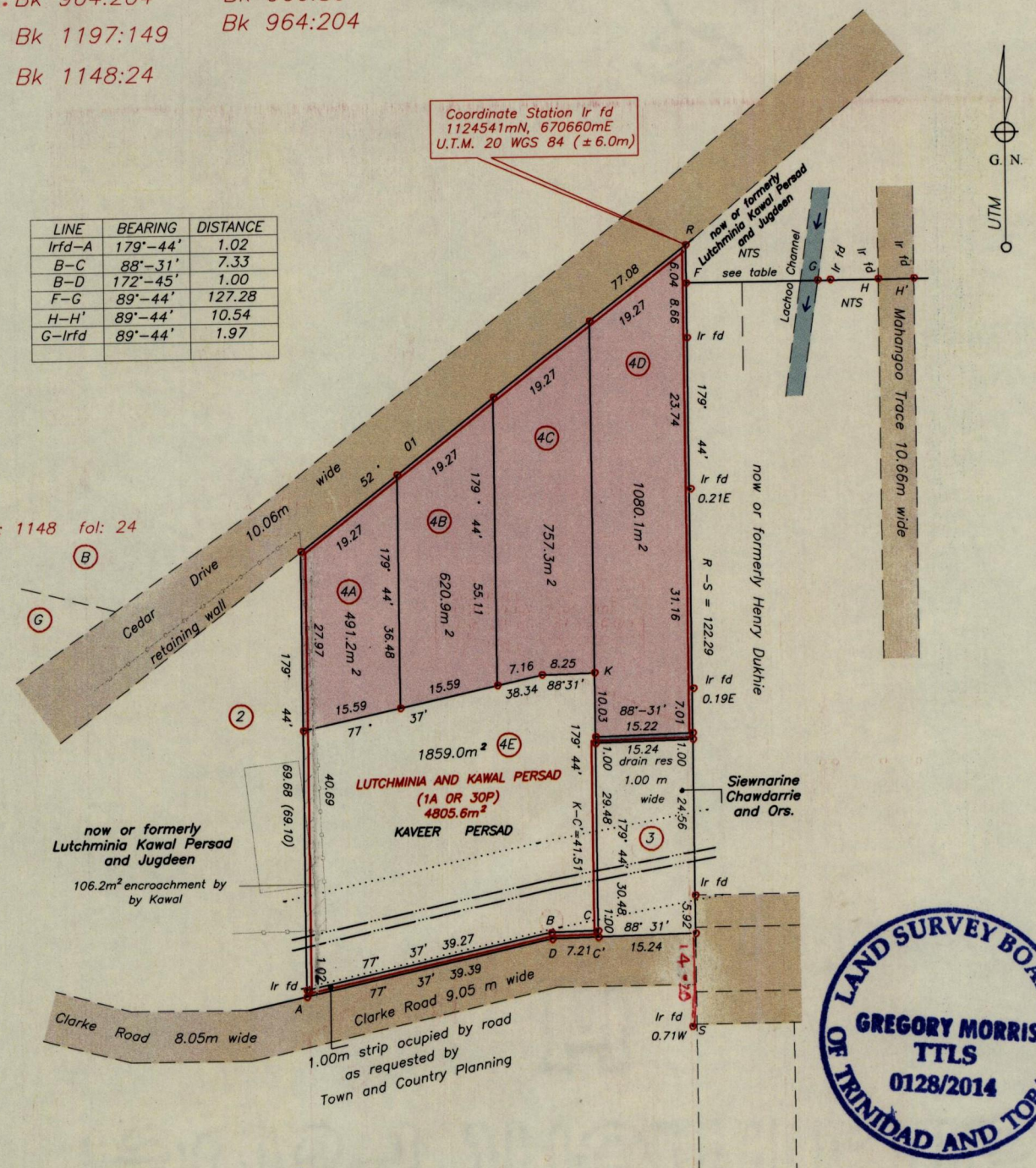
County of St. Patrick

Orig. Bk 964:204 Bk 966:86
Bk 1197:149 Bk 964:204
Bk 1148:24

Coordinate Station Ir fd
1124541mN, 670660mE
U.T.M. 20 WGS 84 ($\pm 6.0m$)

LINE	BEARING	DISTANCE
Irfd-A	179°-44'	1.02
B-C	88°-31'	7.33
B-D	172°-45'	1.00
F-G	89°-44'	127.28
H-H'	89°-44'	10.54
G-Irfd	89°-44'	1.97

Bk: 1148 fol: 24



Approved
Director of Surveys

Wayleave 6.1m wide
Petrotrin Oil line

○ Denotes Iron Put unless otherwise stated
Bearings are UTM Grid based on Solar Obs.

Distances are in Metres

SCALE 1 : 1000

PLAN of four parcels of land coloured pink in the Ward of Siparia
Containing together two thousand, nine hundred and forty nine point five square metres
Surveyed by me, with due authority, in May 2011

Certified Correct in accordance with Regulation 25(1) of the Land Surveyors' Regulations 1998

Checked by

Trinidad and Tobago Land Surveyor
14th Feb, 2014

Entered on