

1654

176

R.P.O. Vol. 152

Fol. 237

Cadastral Sheet G.18.H.  $\frac{73C}{2/d,4/b}$

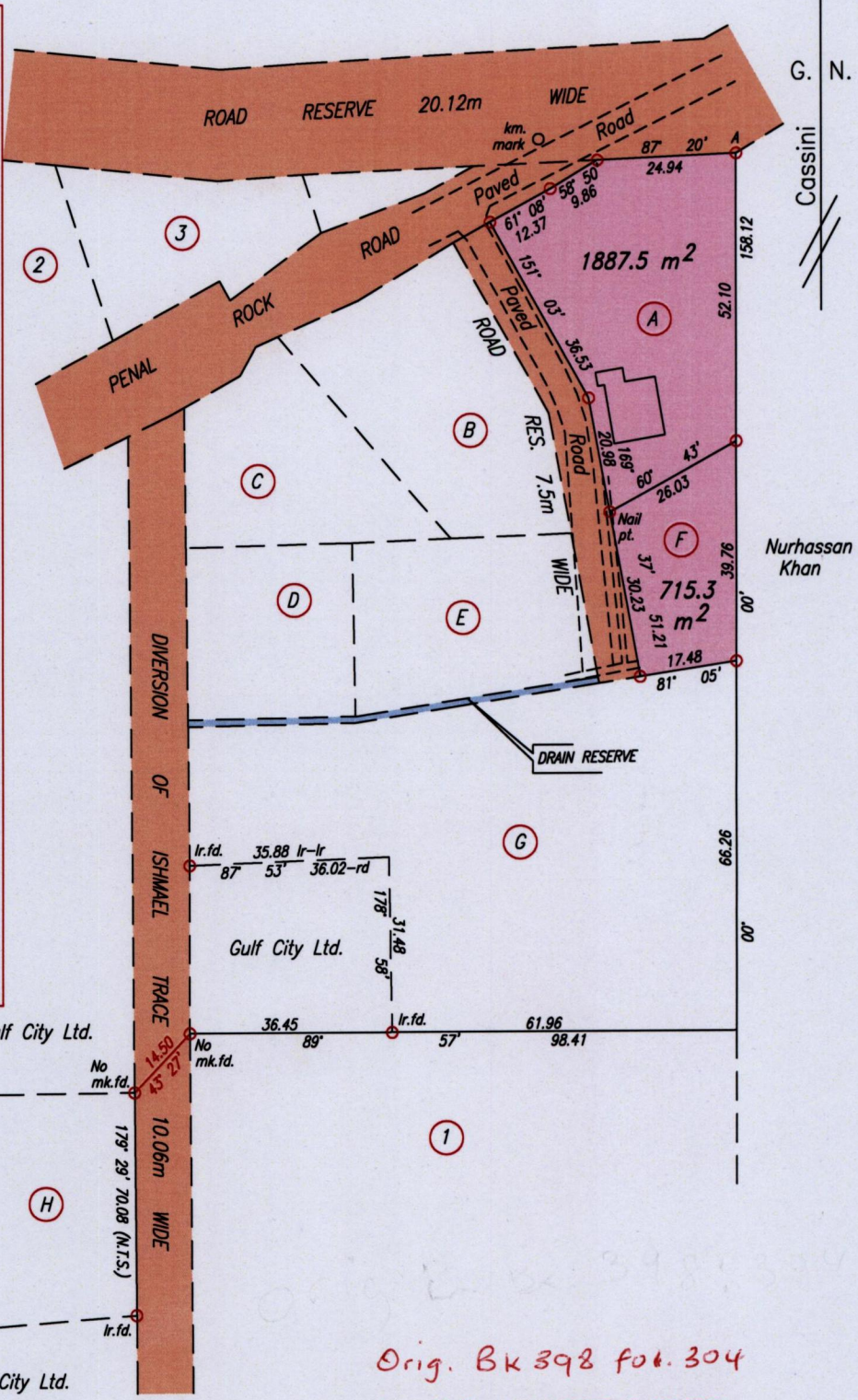
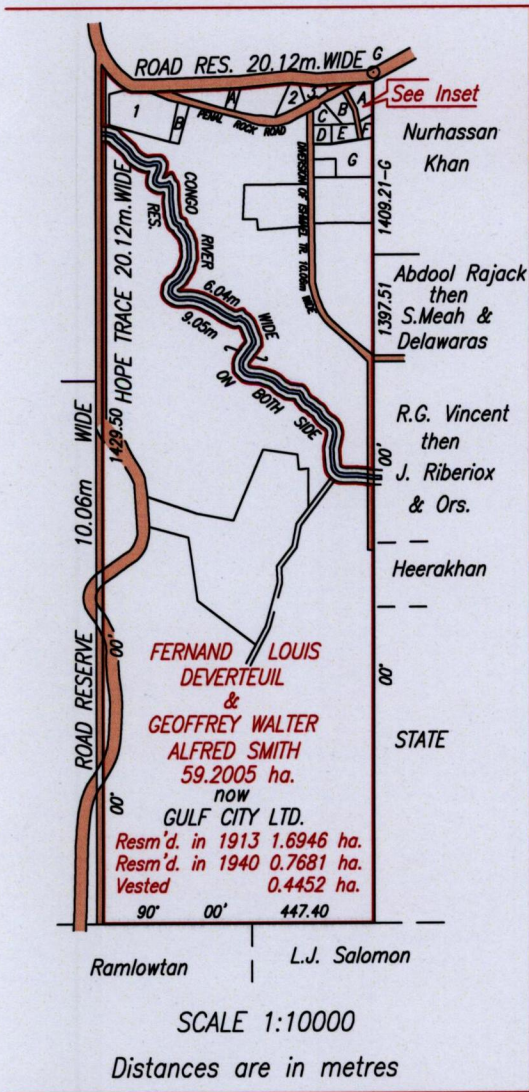
C.T. Vol. 1679

Fol. 155

Ward of Siparia

PROCESS ID # 42937

County of St. Patrick



References :  
 See Plan R.H. 1149  
 & Unregistered Plan #599

Orig. Bk 398 fol. 304

Point "A" = N 1119505, E 674283  
 Coordinates obtained by Hand Held GPS.  
 U.T.M. 20, NAPARIMA (+/-5.0m.)

Approved *[Signature]*  
 Director of Surveys 21/5/14

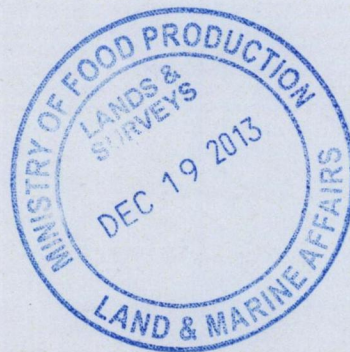
SCALE 1:1250  
 Distances are in metres

○ Denotes Iron put except otherwise stated  
 Bearings are based on solar Observations  
 PLAN of 2 Parcels of land coloured pink in the Ward of Siparia  
 Containing together two thousand six hundred and two point eight square metres  
 Surveyed by me, with due authority, in June 2011  
 Certified Correct in accordance with Regulation 25 (1) of the Land Surveyors Regulations 1998.

Checked by *m.m.e. 9/1/2014* *Shri Persad Mahary*

Entered on . . . . . Trinidad & Tobago Land Surveyor. . . . . 9h May 2013. P.T.O.

<i>Lot No.</i>	<i>Owner Name</i>	<i>Area</i>	<i>C.T. Vol. &amp; Fol.</i>
1	<i>Sulaman Jokhan &amp; Glory Sulaman</i>	<i>7136.1 m<sup>2</sup></i>	<i>C.T. Vol.3219 &amp; Fol.185</i>
2 & 3	<i>Krishna &amp; Surujdaye Dowlath</i>	<i>1400.8 m<sup>2</sup>/913.5 m<sup>2</sup></i>	<i>C.T. Vol.3219 &amp; Fol.203</i>
A	<i>Tomyoy &amp; Yvis Trea</i>	<i>578.8 m<sup>2</sup></i>	<i>C.T. Vol.3827 &amp; Fol.451</i>
B	<i>Alfred &amp; Sybil Thompson</i>	<i>1540.3 m<sup>2</sup></i>	<i>C.T. Vol.4268 &amp; Fol.31</i>
D	<i>Simon, Anthony &amp; Steve Vialva</i>	<i>935.7 m<sup>2</sup></i>	<i>C.T. Vol.4205 &amp; Fol.385</i>
G	<i>Emmanuel &amp; Utilda Philandez</i>	<i>0.4718 ha.</i>	<i>C.T. Vol.4220 &amp; Fol.203</i>



1654/176