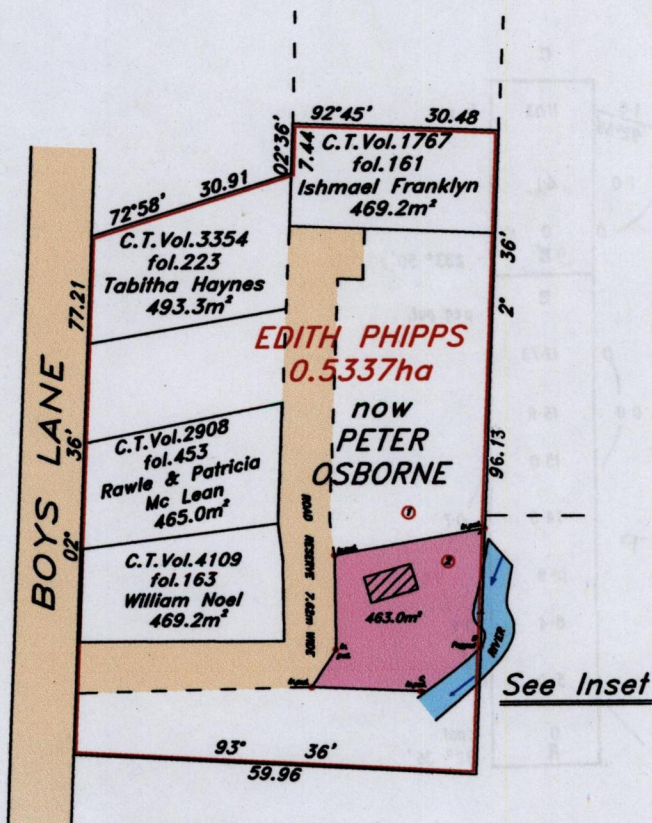


1054

175

R.P.O. Vol. 31 Fol. 439  
C.T. Vol. 1560 Fol. 327

Cadastral Sheet 24B (B.24.C.)  
2/d, 4/b  
Borough of Arima  
County of St. George

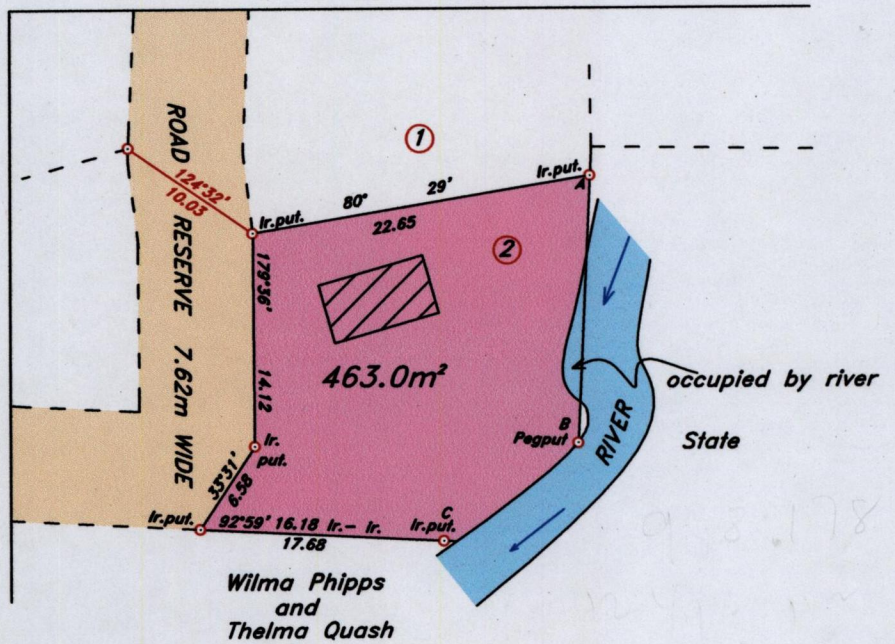


Vide  
Bk. 1196 Fol. 117



SCALE 1 : 1000

INSET



Orig. BK 948 fol. 178

Approved

*Michael Jones*  
Director of Surveys

SCALE 1 : 500

Distances are in metres.

Bearings are Cassini Grid, based on Solar Observations.

PLAN of a Parcel of land coloured pink in the Borough of Arima

Containing Four Hundred and Sixty-Three Point Zero Square Meters.

Prepared by me, with due authority from a Survey done in November 1990, by Michael Jones.

In accordance with Regulation 25 (1) of the Land Surveyors' Regulations 1998, I certify that this plan is correct.

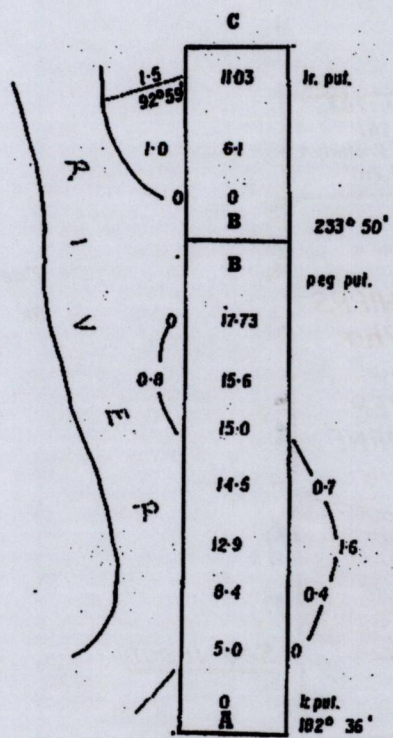
Checked by

HR-23/04/14

Entered on

*Colvin Blaize*  
Trinidad and Tobago Land Surveyor 14th February 2011.





1654/175