

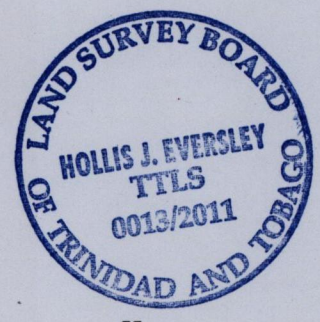
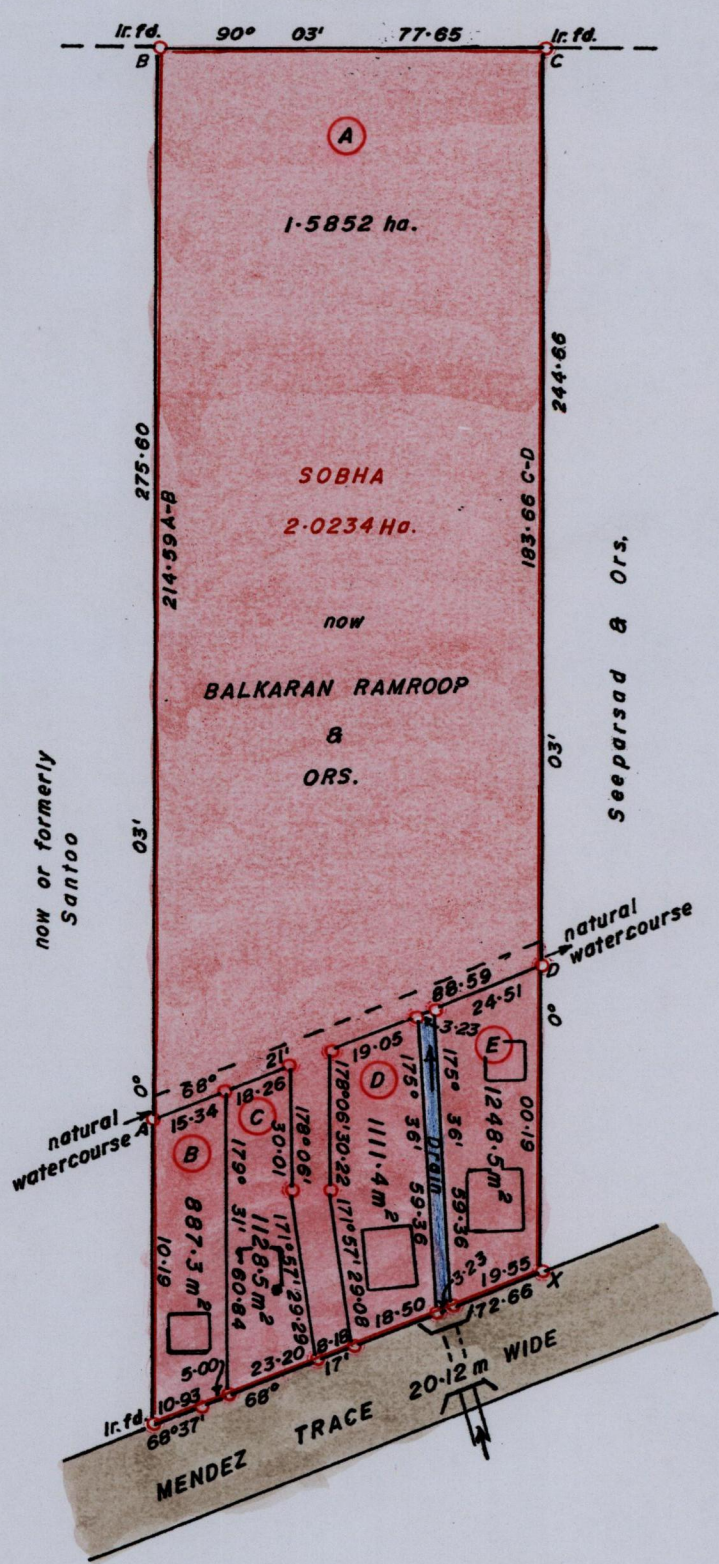
1654

172

R.P.O Vol. 561 Fol. 501
C.T. Vol. Fol.

Ward of Siparia.
County of St. Patrick.
Cadastral Sheet G.18.I. 73B
4/c

now or formerly
E. L. Fraser



X
1117523 m N ; 667314 m E.
U.T.M. 20 ; WGS 84 (+/-5.0m)
GPS Handheld Direct Obs.

Orig. Bk. 494 : 228

Approved
Director of Surveys 12/5/11

SCALE 1 : 1500.

Distances are in METRES
o Denotes Iron Put except otherwise stated
Bearings are Cassini Grid based on Solar Observations.
Note : To obtain compass Bearing subtract 03 minutes.

PLAN of 5 Parcels of land coloured PINK in the Ward of Siparia.
Containing together two point zero two two eight hectares.
Surveyed by me, with due authority, in April 2011.
Certified correct in accordance with Reg. 25(1) of the Land Surveyors' Regulations 1998,

Checked by

[Signature]
31st July

Entered

Trinidad and Tobago Land Surveyor..... 2011.