

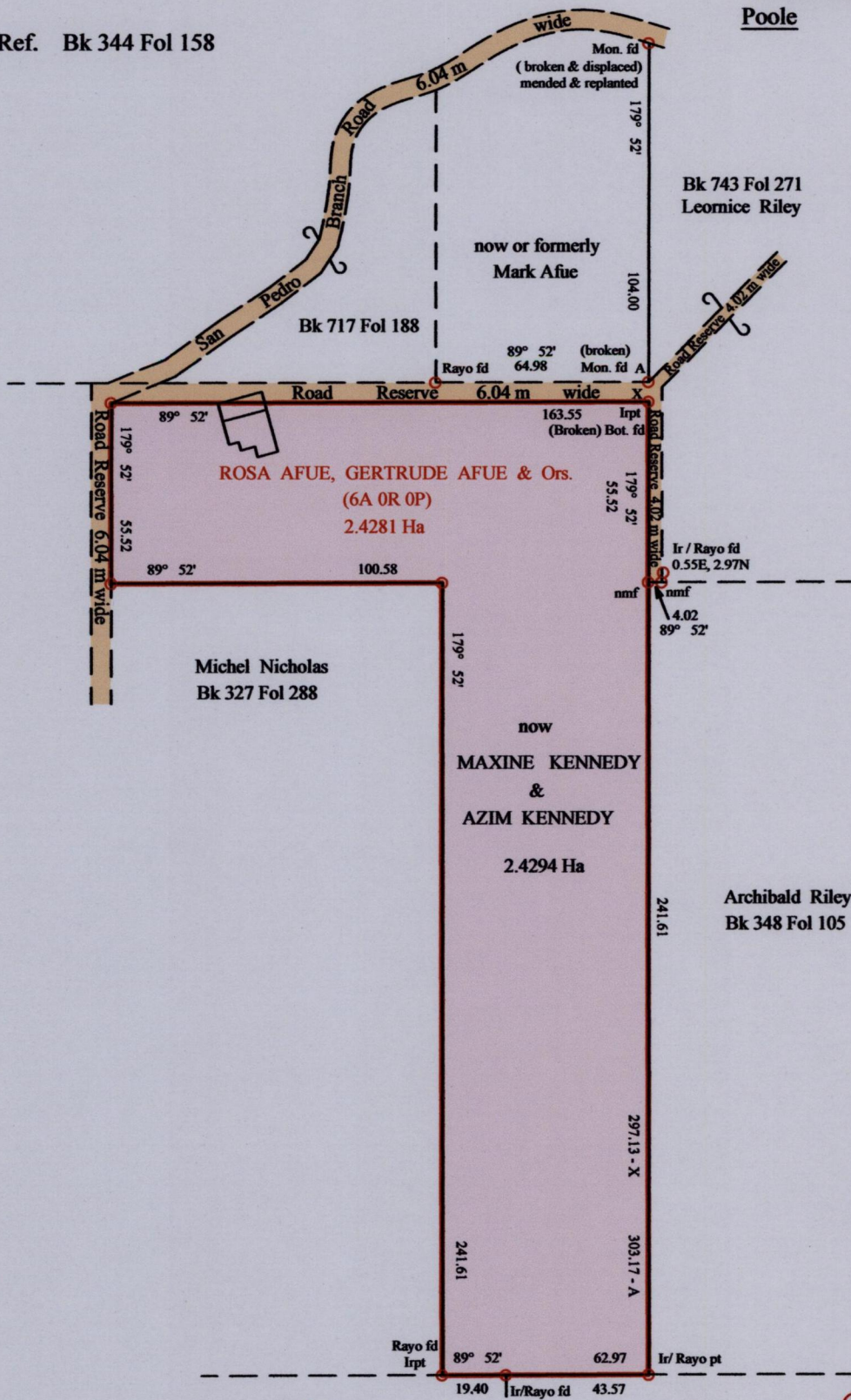
1654

171

RPO Vol 124 Fol 261
CT Vol 2554 Fol 277

Cadastral Sheet H.1.C., 55A
County of Nariva 3/c & 3/d
Ward of Charuma
Poole

Ref. Bk 344 Fol 158



1

2

SANTA MARIA ESTATE
Plan XD 26

Orig. 344 fol. 161

Monument A
Hand-held GPS Coords.
UTM Zone 20, Naparima 1955
E 0692642 ± 6m
N 1139629

Approved

Director of Surveys

[Signature]

○ denotes Iron put except otherwise stated
Bearings are Cassini Grid based on Solar Obs.
Distances are in Metres
SCALE 1/2000

PLAN of a parcel of land coloured pink in the Ward of Charuma
Comprising two point four two nine four Hectares
Surveyed by me, with due authority, in April 2014.
Certified correct in accordance with Regulation 25 (1) of the Land Surveyors' Regulations 1998.

Checked by
Entered on

Meela Mohammed
Trinidad and Tobago Land Surveyor

21st. April 2014