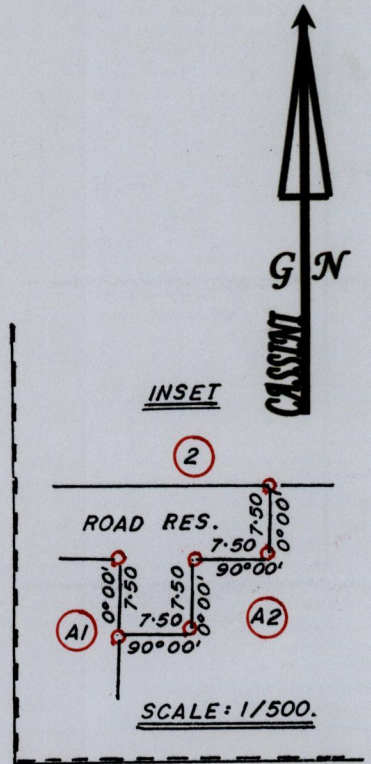
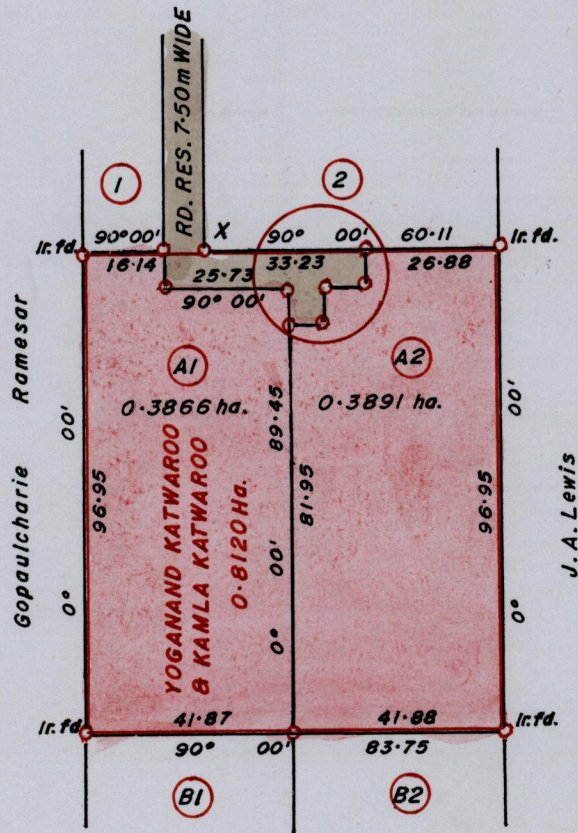


1654

17

R.P.O Vol. 262 Fol. 611
C.T. Vol. 5227 Fol. 9

Ward of Siparia.
County of St. Patrick.
Cadastral Sheet G.14.M. 64D ; 63F
3/c 4/d



Original Survey Plan GA-81

X
1122172 mN; 674406 mE.
U.T.M. 20; WGS 84 (+/-5.0m)
GPS Handheld Direct Obs.

Bk. 1271 : 144.
Bk. 1333 : 136.
SCALE 1 : 1500.

Approved.....
Director of Surveys. *[Signature]*

Distances are in METRES
o Denotes Iron Put except otherwise stated
Bearings are Cassini Grid based on Solar Observations.

Note : To obtain compass Bearing add/subtract 00 minutes.

PLAN of 2 Parcels of land coloured PINK in the Ward of Siparia.
Containing together zero point seven seven five seven hectare.
Surveyed by me, with due authority, in September 2011.
In accordance with Reg. 25(1) of the Land Surveyors' Regulations 1998,
I certify that this plan is correct.

Checked by *[Signature]* 2013.11.26

[Signature]
Trinidad and Tobago Land Surveyor..... 2011.