

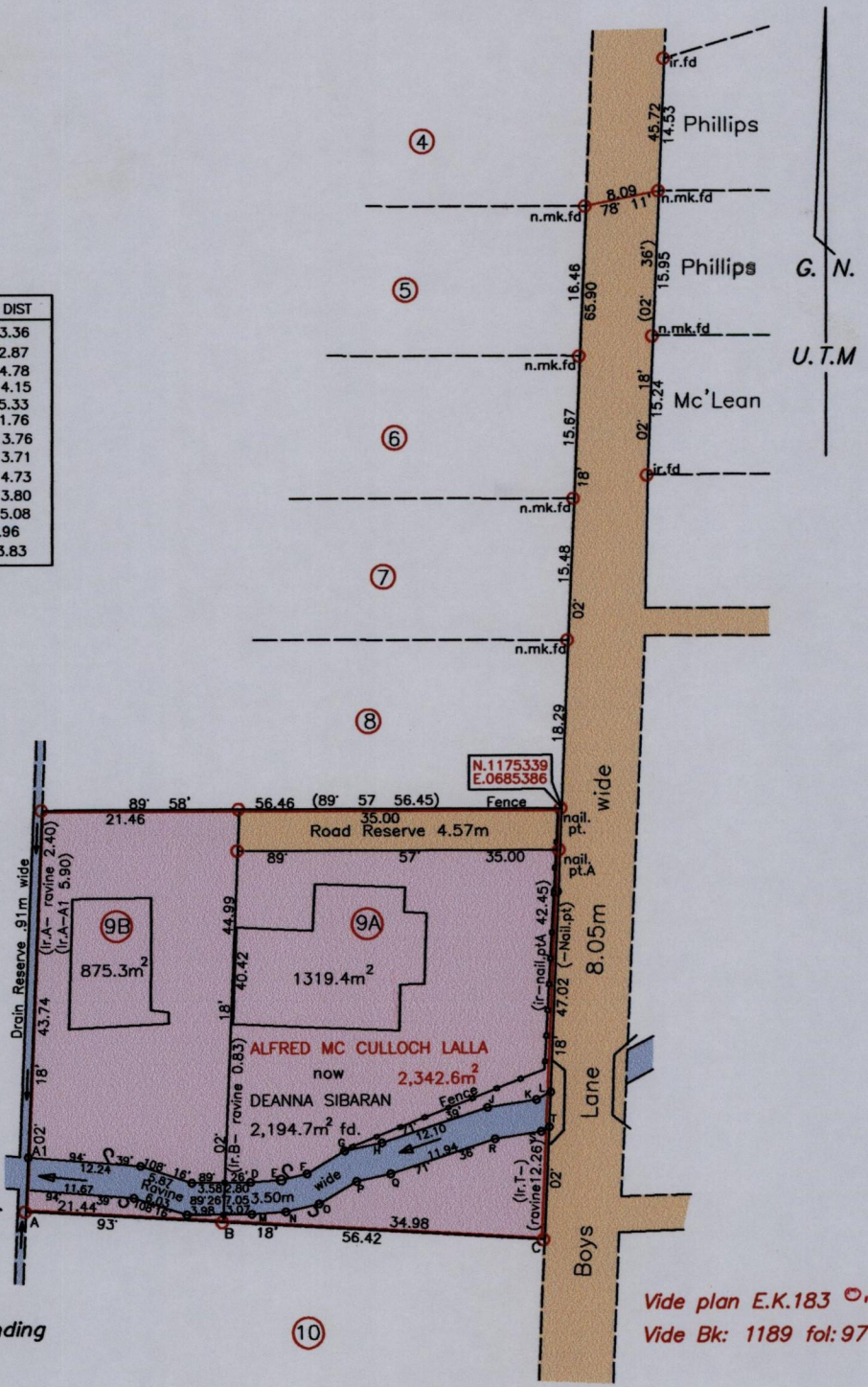
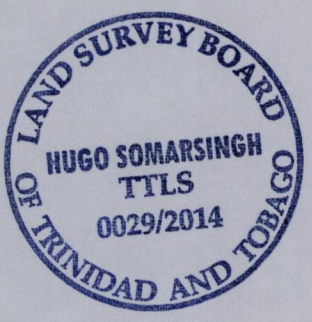
16548

1688

U.P.R.N No.....
R.P.O. Vol. 1549 Fol. 207
C.T Vol. 1701 Fol. 137
PROCESS ID # 71020

Borough of Arima
County of St. George

LINE	BRG	DIST
D-E	86° 27'	3.36
E-F	76° 26'	2.87
F-G	59° 04'	4.78
G-H	77° 51'	4.15
J-K	86° 46'	5.33
K-L	61° 35'	1.76
M-N	86° 27'	3.76
N-O	76° 26'	3.71
O-P	59° 04'	4.73
P-Q	77° 51'	3.80
R-S	80° 46'	5.08
S-T	60° 58'	.96
L-T	182° 18'	3.83



Approved: *[Signature]*
Director of Surveys
6/5/14

Vide plan E.K.183 Orig.
Vide Bk: 1189 fol: 97

Co-ordinates are based on GPS finding
U.T.M. Zone 20 W.G.S.84
(-/+ 5.00m)

SCALE 1/750
Distances are in metres

- o Denotes peg put
- o Denotes Iron put except otherwise stated
- Bearings are U.T.M. Grid based on Solar Observations
- Note : To obtain Cassini bearings add 18 minutes

Plan of two Parcels of land coloured pink in the Borough of Arima
Containing together two thousand one hundred and ninety four point seven square metres
Surveyed by me, with due authority, in October 2012

Certified correct in accordance with Regulation 25 (1) of the Land Surveyors' Regulations 1998.

Checked by..... *[Signature]*

Entered on..... Trinidad and Tobago Land Surveyor (T.T.L.S) February 2014