

1654

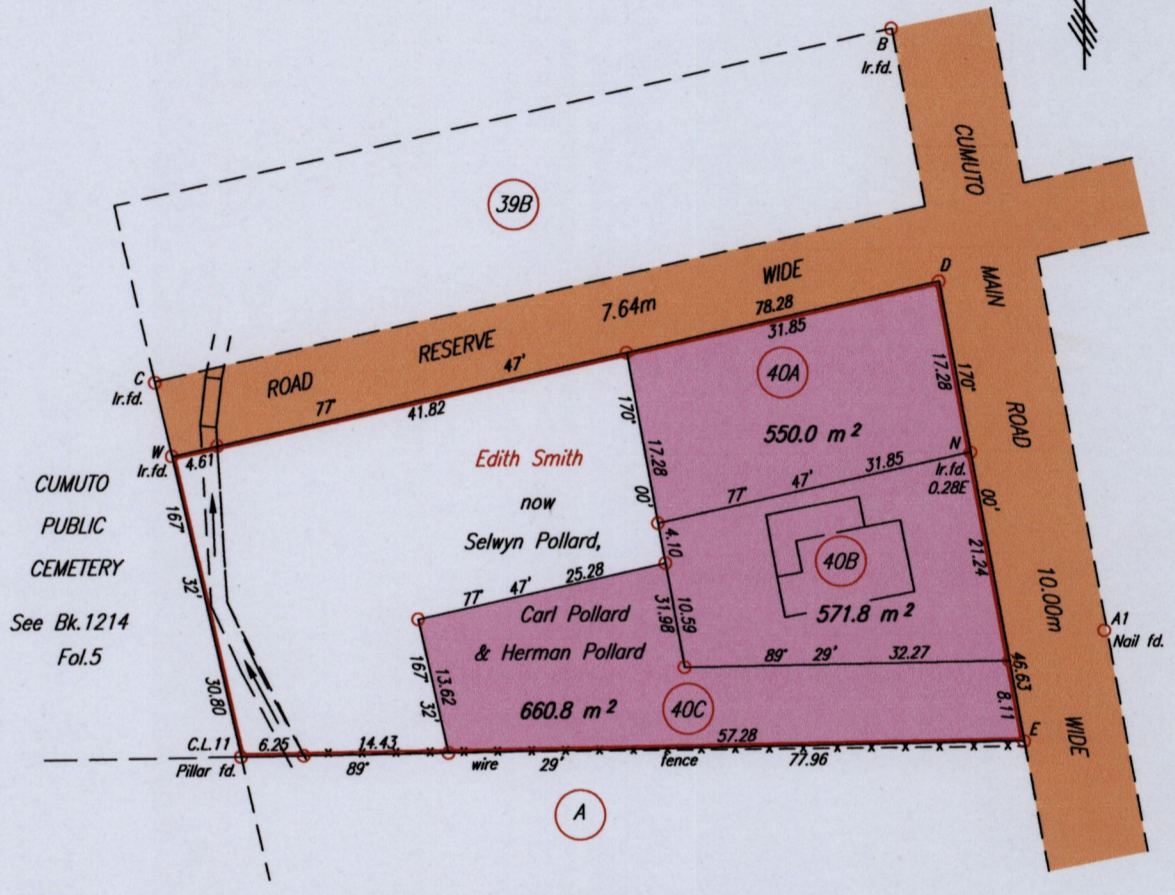
157

PROCESS ID # 78438  
R.P.O. Vol. 133 Fol. 363  
C.T. Vol. 4333 Fol. 21

Cadastral Sheet C.21.M 25D  
2/b  
Ward of Tamana  
County of St. Andrew

Vide Plan K.U.79

**CUMUTO VILLAGE**



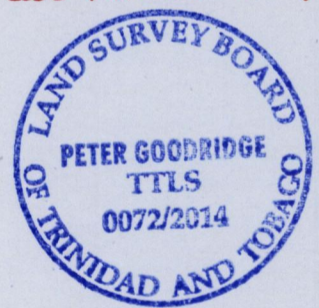
Original Survey Plan in L&S Bk. 19 Fol. 205 ✓

See Bk. 160 fol 57

**LEGEND**

From	To	Bearing	Distance
B	D	169° 55'	25.67
D	A1	155° 19'	38.55
C	W	167° 28'	7.53

Coordinates of C (lr. fd.): 0695898mE, 1171339mN  
UTM WGS84 datum (+/- 5.00m)  
G.P.S. Direct Observation using a handheld GPS



Approved .....  
Director of Surveys

SCALE 1 : 750

Distances are in METRES

- Denotes Iron put except where otherwise stated
- Bearings are Cassini Grid based on Solar Observations
- PLAN of 3 Parcels of land coloured pink in the Ward of Tamana
- Containing together one thousand seven hundred and eighty two point six square metres
- Surveyed by me, with due authority, in September 2012
- Certified Correct in accordance with Regulation 25 (1) of The Land Surveyors Regulations 1998,
- Checked by ..... TTLS
- Entered on .....