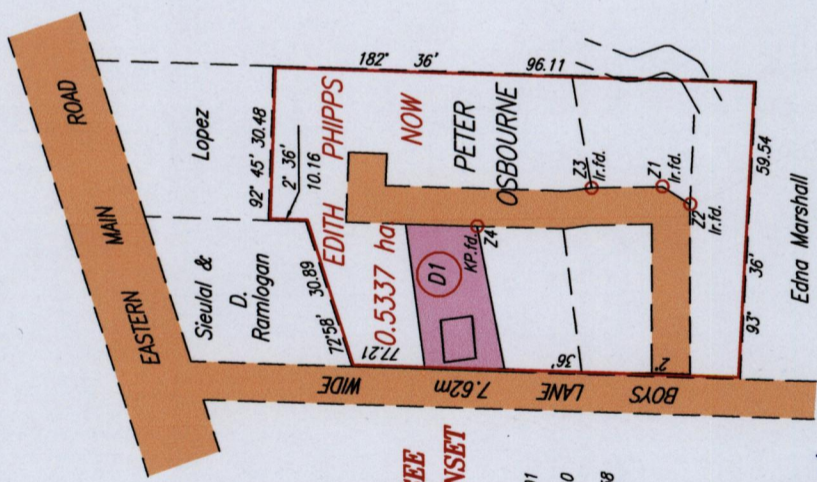


PROCESS ID # 757719  
 R.P.O. Vol. 31 Fol. 439  
 C.T. Vol. 1560 Fol. 327

Original Survey in Bk. 948 Fol. 178  
 See Bk. 1273 Fol. 38  
 Bk. 993 Fol. 2

D' A B A D I E

Cadastral Sheet B.24.C 24B  
 2/d & 4/b  
 Borough of Arima  
 County of St. George



SEE INSET

23 - 24	342' 04"	24.01
23 - 21	179' 35"	14.10
21 - 22	213' 23"	6.58

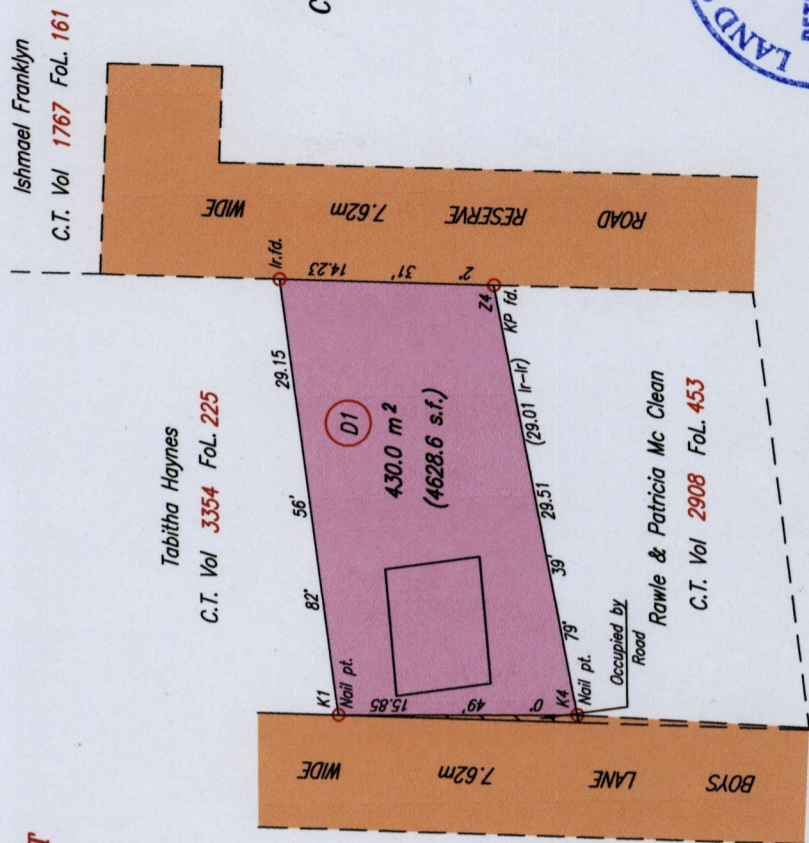
Approved by *[Signature]*  
 Director of Surveys

SCALE 1:1500

Distances are in METRES

- Denotes Iron put except where otherwise stated
- Bearings are Cassini Grid based on Solar Observations
- PLAN of a Parcel of land coloured pink in the Borough of Arima
- Containing four hundred and thirty point zero square metres
- Surveyed by me, with due authority, on March 6th, 2012
- Certified Correct in accordance with Regulation 25 (1) of The Land Surveyors Regulations 1998,

INSET

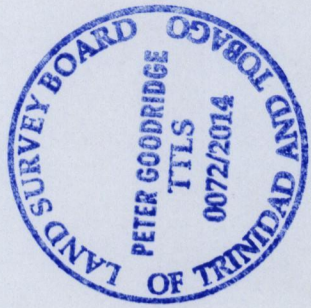


SCALE 1:500

Distances are in METRES

Orig. Survey Bk. 948 fol. 178

Coordinates of K1 (Nail pt.): 0685235mE, 1175218mN  
 U.T.M. 20 Naparima datum (+/- 3.00m)  
 G.P.S. Direct Observation using handheld receiver



1654

156

Checked by .....

Entered on .....

Trinidad & Tobago Land Surveyor  
 C:\LESS 2012\TRINIDAD\DOUGLAS, LISA\D'ABADIE, MAR. 2012.dwg. FILE NO: D041  
 11 April 2014