

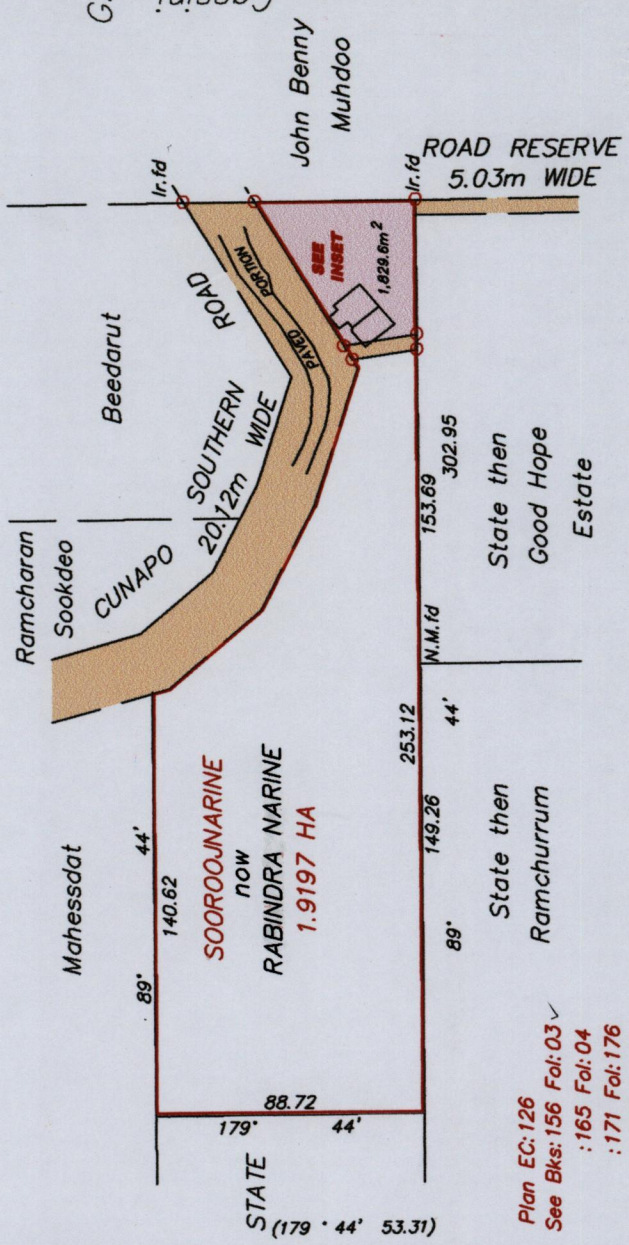
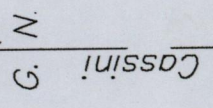
1654

155

Cadastral Sheet E.2.1 35C  
1/b

Ward of Turure

County of St. Andrew



SCALE 1/2500

SCALE 1/1000

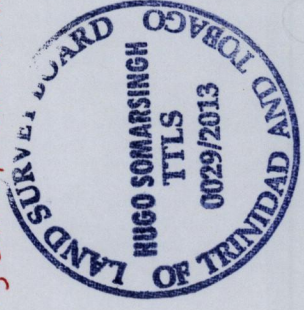
Distances are in metres

Co-ordinates are based on GPS finding

U.T.M. Zone 20 WG.S.84

(-/+ 5.00m)

Orig Survey Bk 156 fol 3

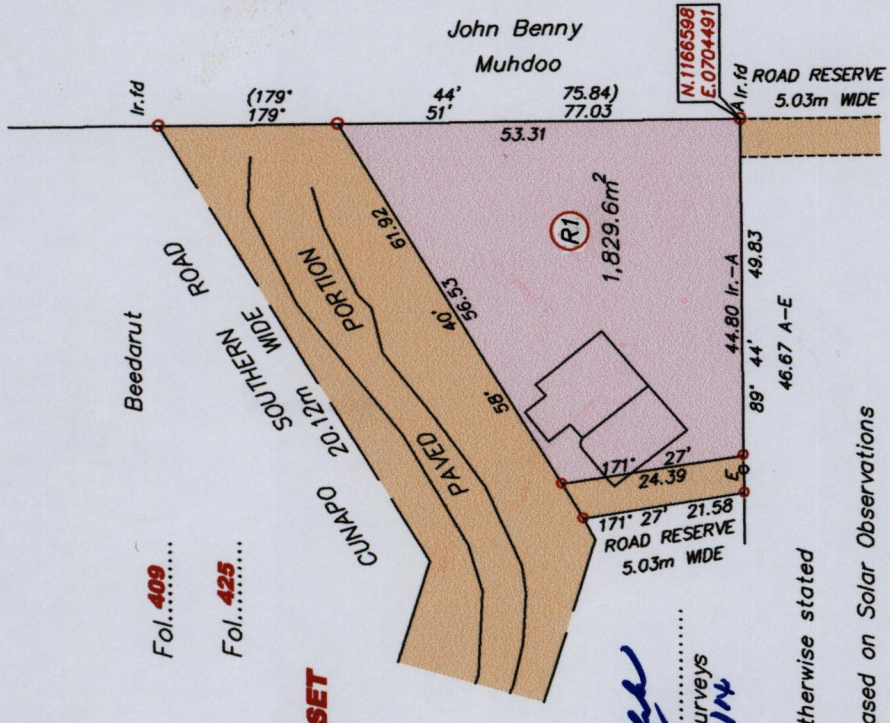


Process ID # 52035  
U.P.R.N No.....

R.P.O Vol...80...  
Fol...409.....

C.T. Vol...3843...  
Fol...425.....

**INSET**



Approved by.....  
Director of Surveys  
5/5/11

○ Denotes Iron put except otherwise stated

Bearings are Cassini Grid based on Solar Observations

Note : To obtain U.T.M bearings subtract 18 minutes

Plan of a Parcel of land coloured pink in the Ward of Turure

Containing one thousand eight hundred and twenty nine point six square metres

Surveyed by me, with due authority, in July 2011

Certified correct in accordance with Regulation 25 (1) of the Land Surveyors' Regulations 1998.

Checked by.....  
*Hugo Somarsingh*

Entered on.....  
Trinidad and Tobago Land Surveyor 9th.....September 2013