

R.P.O. Vol. 118 Fol. 511
C.T. Vol. 3571 Fol. 197

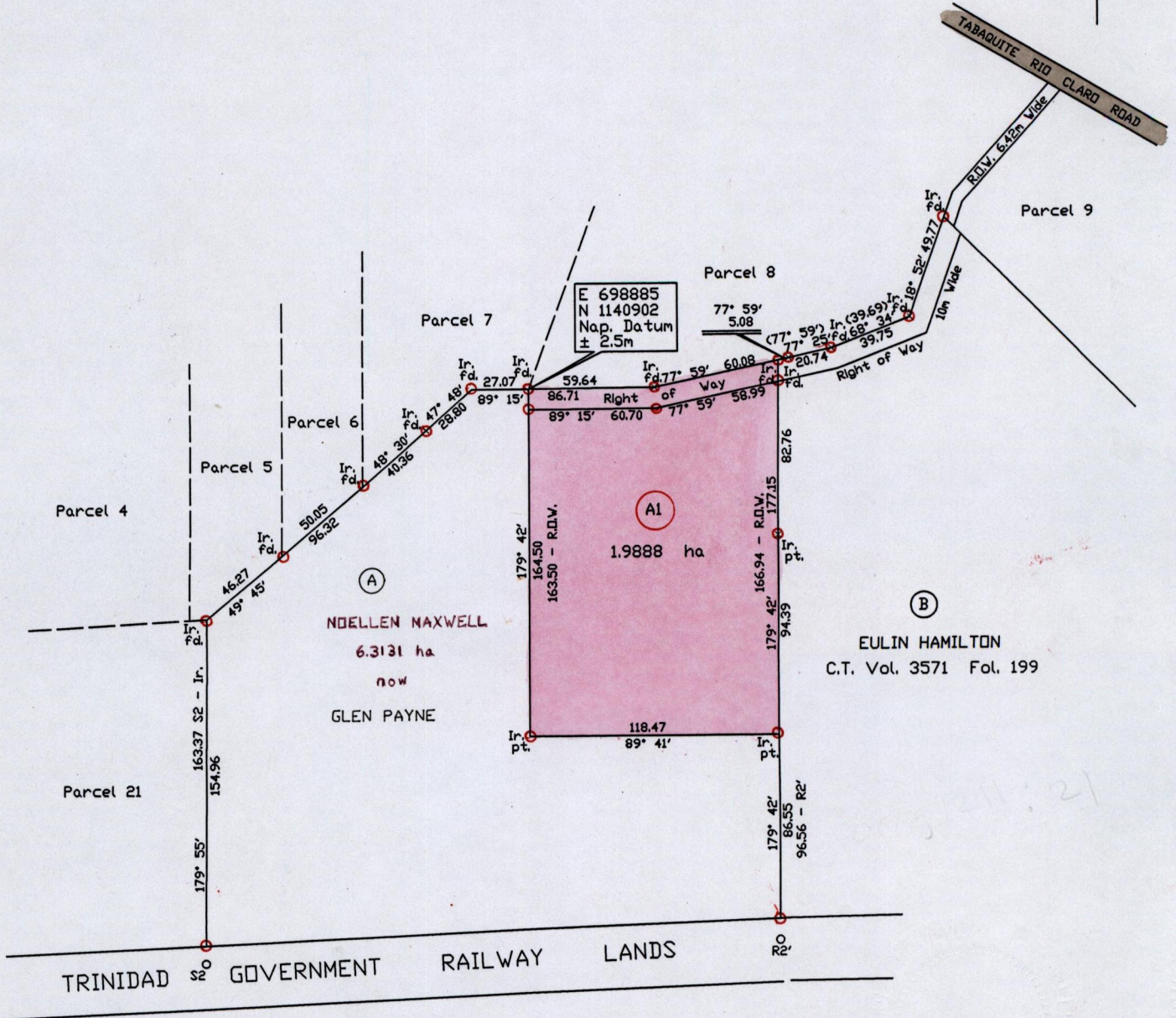
Ward of Charuma

County of Nariva

Cadastral Sheet E.21.N. & O. $\frac{55B}{3/b \& 3/d}$

c.f. L.&S. Bk. 1211 Fol. 21

Cassini
N



Approved

[Signature]

Director of Surveys 4/4/14

Original Survey Bk. 1211:21

S2 - R2' = 87° 33' 271.99

SCALE 1/3000

Distances are in metres

Note: To obtain Cassini Grid add 18 minutes

PLAN of a Parcel of land coloured pink in the Ward of Charuma

Containing one point nine eight eight eight hectares

Surveyed by me with due authority in September 2010

Certified correct in accordance with Regulation 25(1) of the Land Surveyors Regulations 1998

Checked by MOM 12/3/2014

[Signature] TMS

Entered.....

Trinidad & Tobago Land Surveyor.....

30th Dec 2013

