

1654 1654

13

R.P.O Vol. 192 Fol. 599

C.T. Vol. 4885 Fol. 365

Cadastral Sheet G.13.K., 63F/3/b

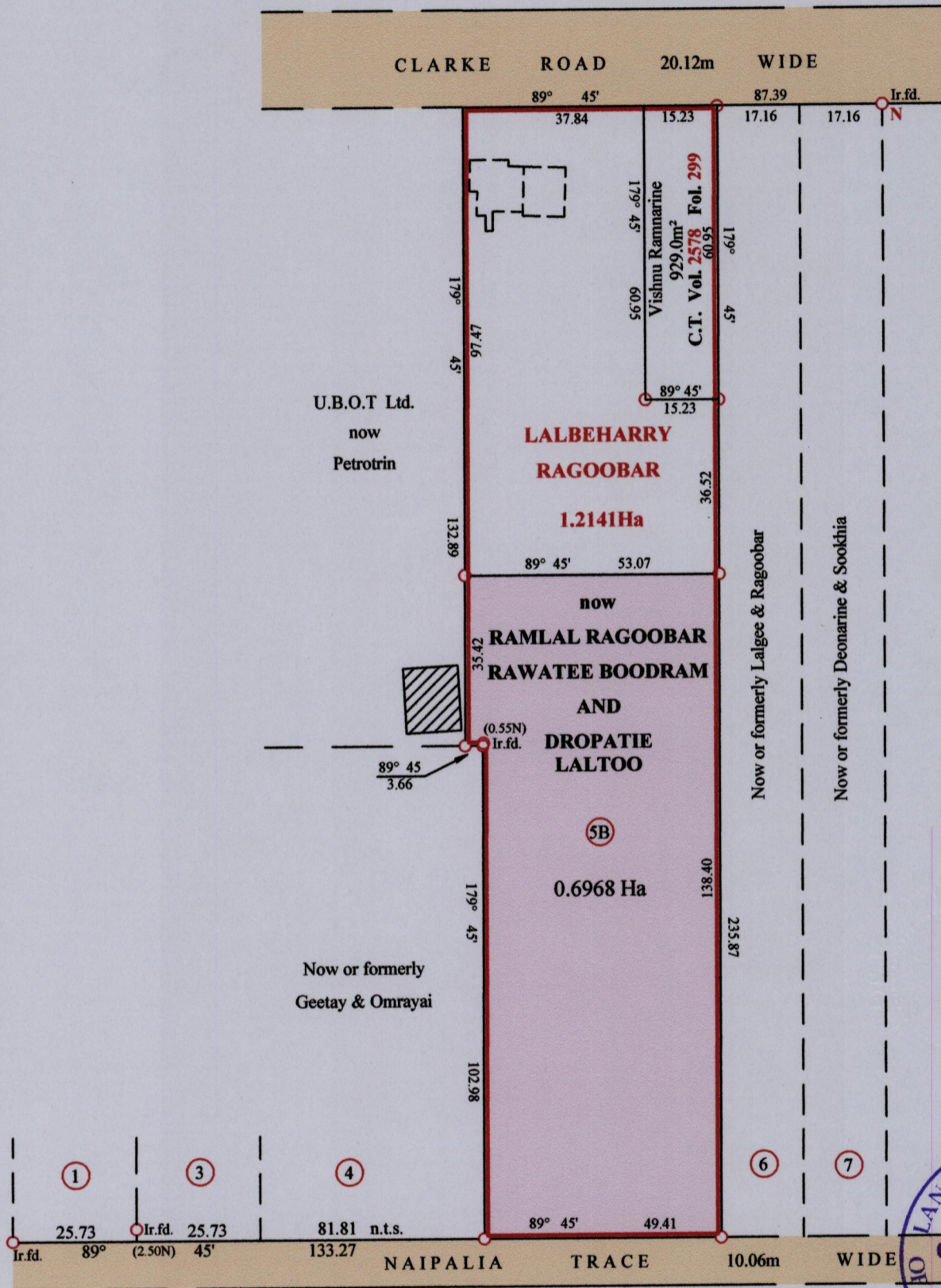
County of St. Patrick

Ward of Siparia

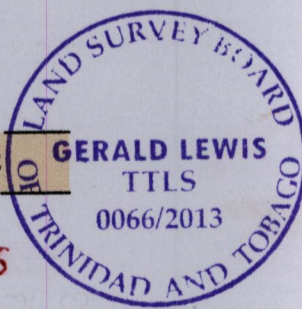
N - 671208mE, 1124231mN  
UTM ZONE 20, Naparima (+/- 5.00m)  
Direct Observation-GPS Hand held

Ref. Bk: 868 Fol: 1

Ref. Bk: 1117 Fol: 65



G.N.  
U.T.M



Orig Survey Bk. 868 : 1, 6

Approved.....  
Director of Surveys 16/11/13

SCALE 1:1250  
Distances are in Metres

Bearings are U.T.M Grid based on Solar Obs.  
○ Denotes Iron Put unless otherwise stated  
Plan of a Parcel of land coloured pink in the Ward of Siparia  
Containing zero point six nine six eight Hectares  
Surveyed by me, with due authority, in January 2013  
Certified Correct in accordance with Regulation 25(1) of the Land Surveyors Regulations 1998.

Checked by.....  
Entered on .....

Trinidad & Tobago Land Surveyor 23/08/2013