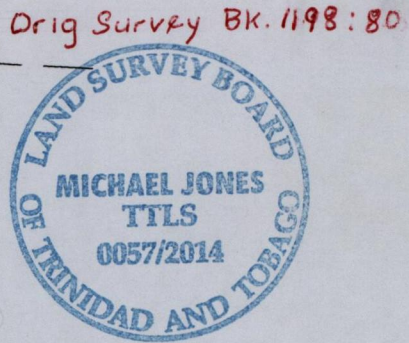
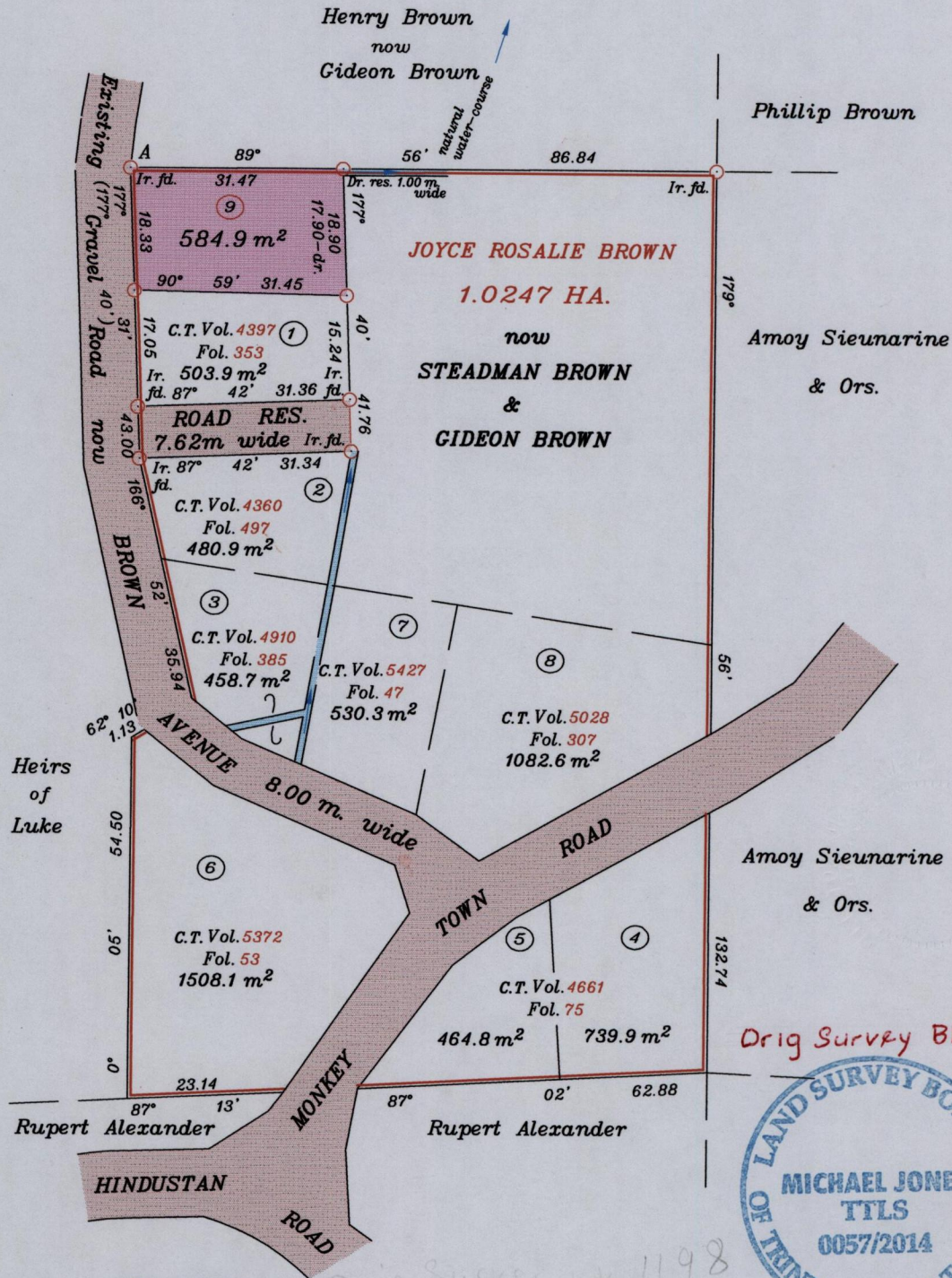
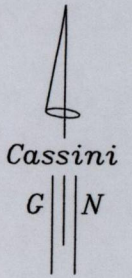


R.P.O. Vol. Fol.  
C.T. Vol. 3836 Fol. 435

Cadastral Sheet C.5.J 54E  
Ward of Ortoire 4/a  
County of Victoria  
New Grant  
Plan JD 174

U.T.M. co-ords. of A (+/-8m.)  
N 1135880 m.  
E 683342 m.  
Co-ordinates are U.T.M. 20 Wgs 84  
obtained by hand-held G.P.S.



Approved *[Signature]*  
Director of Surveys 14/3/14

SCALE 1 : 1000  
Distances are in metres

○ Denotes Ir.pt. except otherwise stated.  
Bearings are based on Solar observations.

PLAN of a parcel of land coloured pink in the Ward of Ortoire  
Containing Five hundred and eighty four point nine square metres  
Surveyed by me with due authority in October, 2010  
Certified Correct in accordance with Reg. 25(1) of  
The Land Surveyors' Regulations 1998.

Checked by.....  
Entered on.....  
Trinidad & Tobago  
Land Surveyor *[Signature]* 26 - 2 - 2014.