

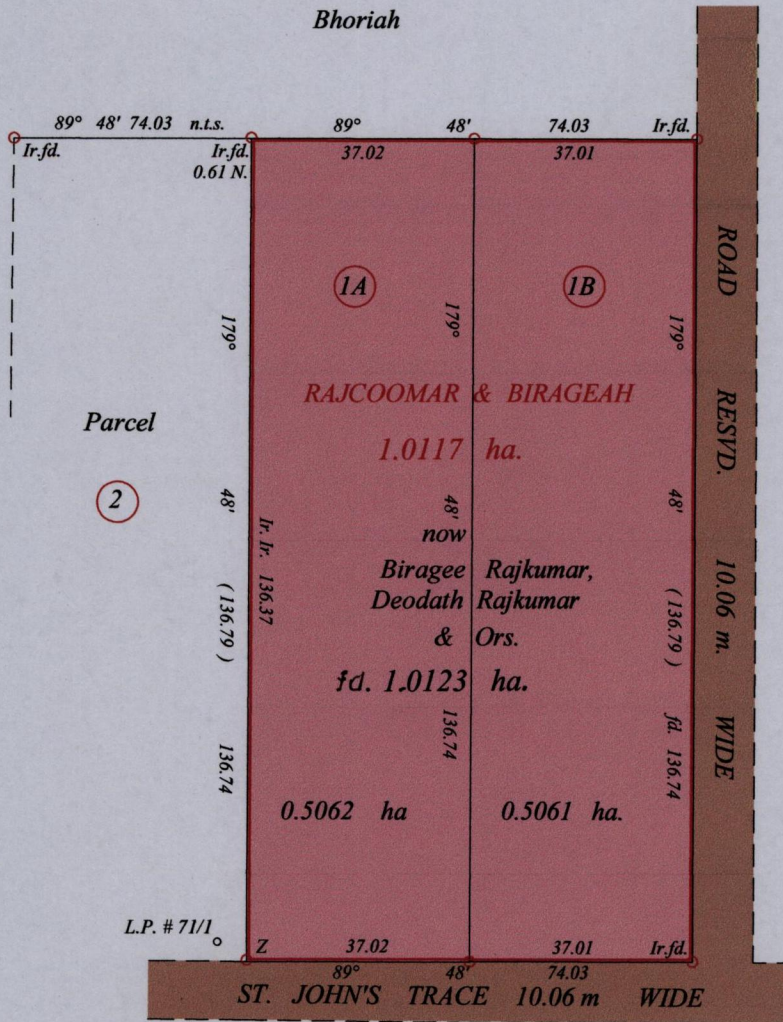
1654

111

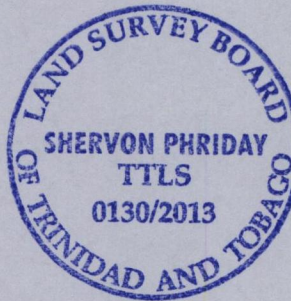
R.P.O. Vol. 145 fol. 283 missing  
C.T. Vol. 1187 fol. 295 missing

Ward of Siparia  
County of St. Patrick  
Cadastral Sheet G.12. B.  $\frac{63 D}{2/b}$

Bk. 892 fol. 214



Original Survey Bk. 892:214



L.P. - Z = 123° 04' 5.60  
Z = N.1127483 E. 662394  
U.T.M. Zone 20 Naparima +/- 5.00 m.  
Hand Held G.P.S.

Approved *[Signature]*  
Director of Surveys 12/3/14

○ Denotes Iron Put Except Otherwise Stated

SCALE : 1: 1250

Note: Bearings are U.T.M. grid based on solar observations      Distances are in metres  
PLAN of 2 Parcels of land coloured pink in the Ward of Siparia  
Containing together one point zero one two three hectares  
Surveyed by me, with due authority, in Feb. 2013.  
Certified Correct in accordance with Regulation 25 (1) of the Land Surveyors Regulations 1998.

Checked by *[Signature]* 23.01.2014

Entered on ..... Trinidad & Tobago Land Surveyor *[Signature]* 04th November 2013