

1654

110

R.P.O. Vol. 592 fol. 197

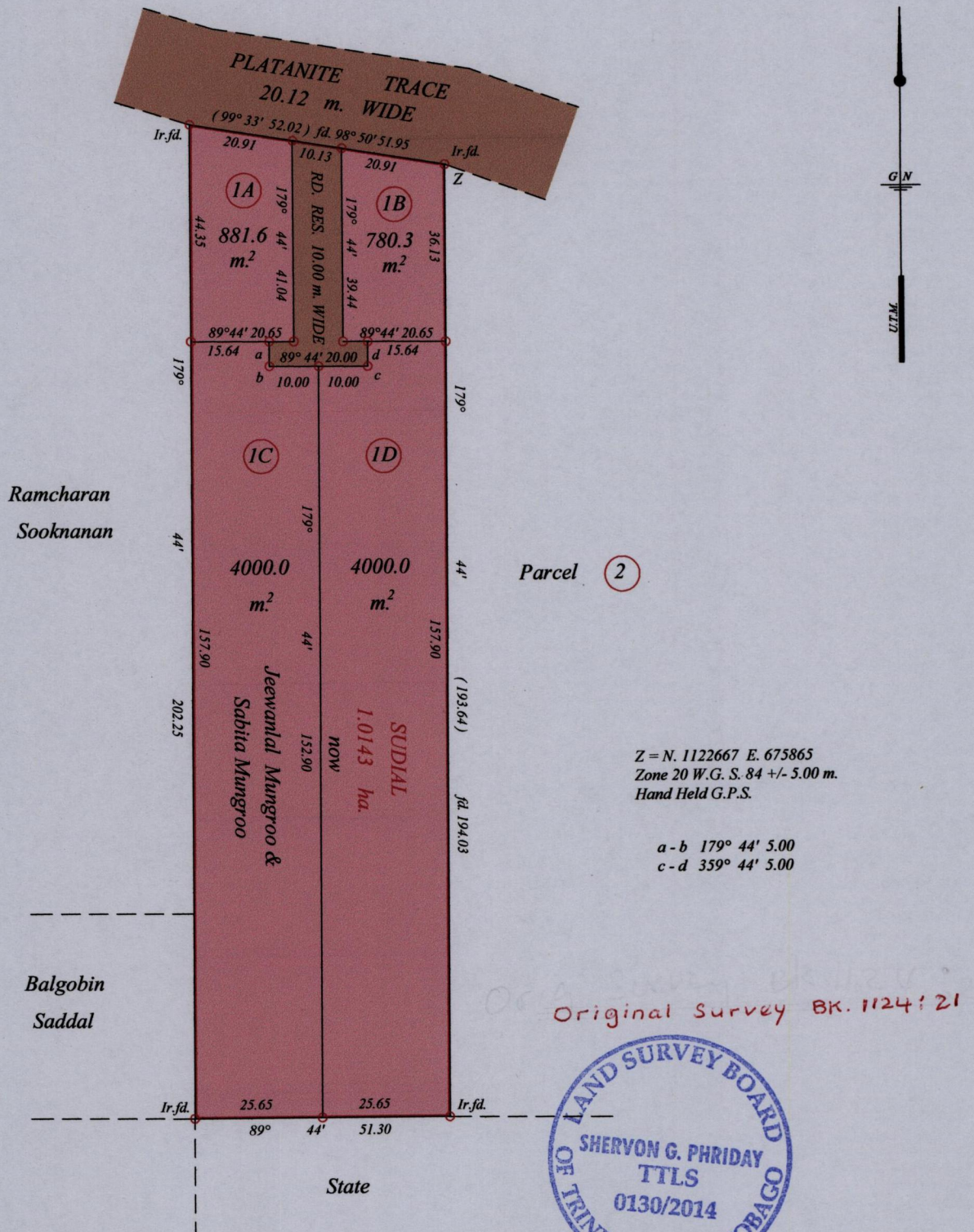
C.T. Vol. 2631 fol. 371

Bk. 1124 fol. 21

Ward of Siparia

County of St. Patrick

Cadastral Sheet G.14. M.  $\frac{64 D}{3/d}$



Approved

Director of Surveys

*[Signature]*  
15/3/14

○ Denotes Iron Put Except  
Otherwise Stated

SCALE : 1: 1250

Note: Bearings are U.T.M. grid based on solar observations

Distances are in metres

PLAN of 4 Parcels of land coloured pink in the Ward of Siparia

Containing together nine thousand six hundred and sixty three point nine square metres  
Surveyed by me, with due authority, in January 2013

Certified correct in accordance with Regulation 25 (1) of the Land Surveyors  
Regulations 1998.

Checked by 48.22.01.2014

*[Signature]*

Entered on

Trinidad & Tobago Land Surveyor 10th January 2014