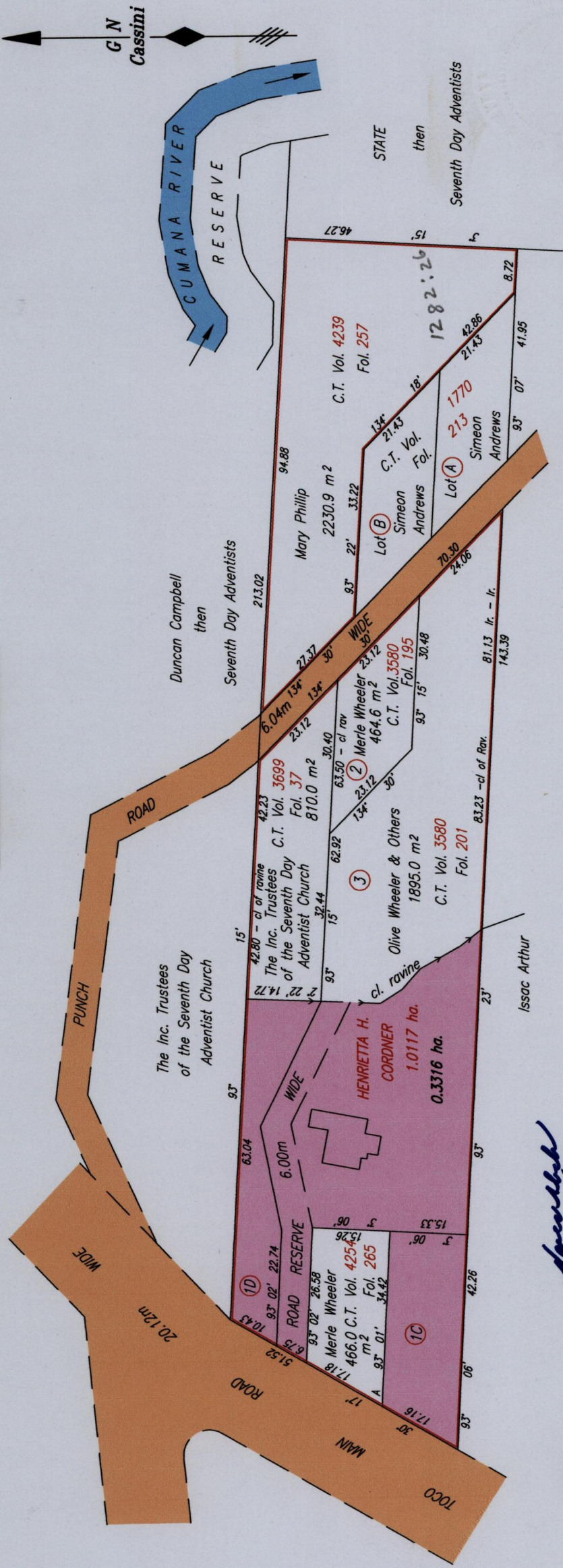


REMAINING PORTION PLAN



1654

1007

Approved
 Director of Surveys 15/5/14

SCALE 1:1000

Distances are in METRES

Plan of one point zero one one seven hectares
 originally transferred to Henrietta H. Corder showing a portion
 coloured pink and containing zero point three one six hectares
 being the remainder after five previous transfers of other portions of the land
 in accordance with Regulation 25 (1) of The Land Surveyors Regulations 1998,

I certify that this plan represents the remaining portion.

Checked by TTLS

Entered on
 Trinidad & Tobago Land Surveyor
 C:\LESS 2009\TRINIDAD\JOHN.REM FOR PLAN.TOCO MAIN RD.DWG FILE NO. J009



Orig Survey Bk 1211:61

References : L&S Bk. 1197 Fol. 24
 L&S Bk. 1227 Fol. 102
 Coordinates of A (lr.pt.): 0724731mE, 11939333mN
 U.T.M. 20 WGS 84 (+/- 8.00m)
 G.P.S. Direct Observation

N.B: Lot 1D to be amalgamated with lands belonging to the Seventh Day Adventists