

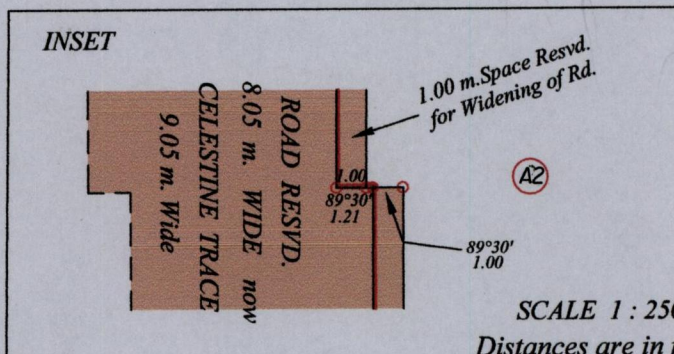
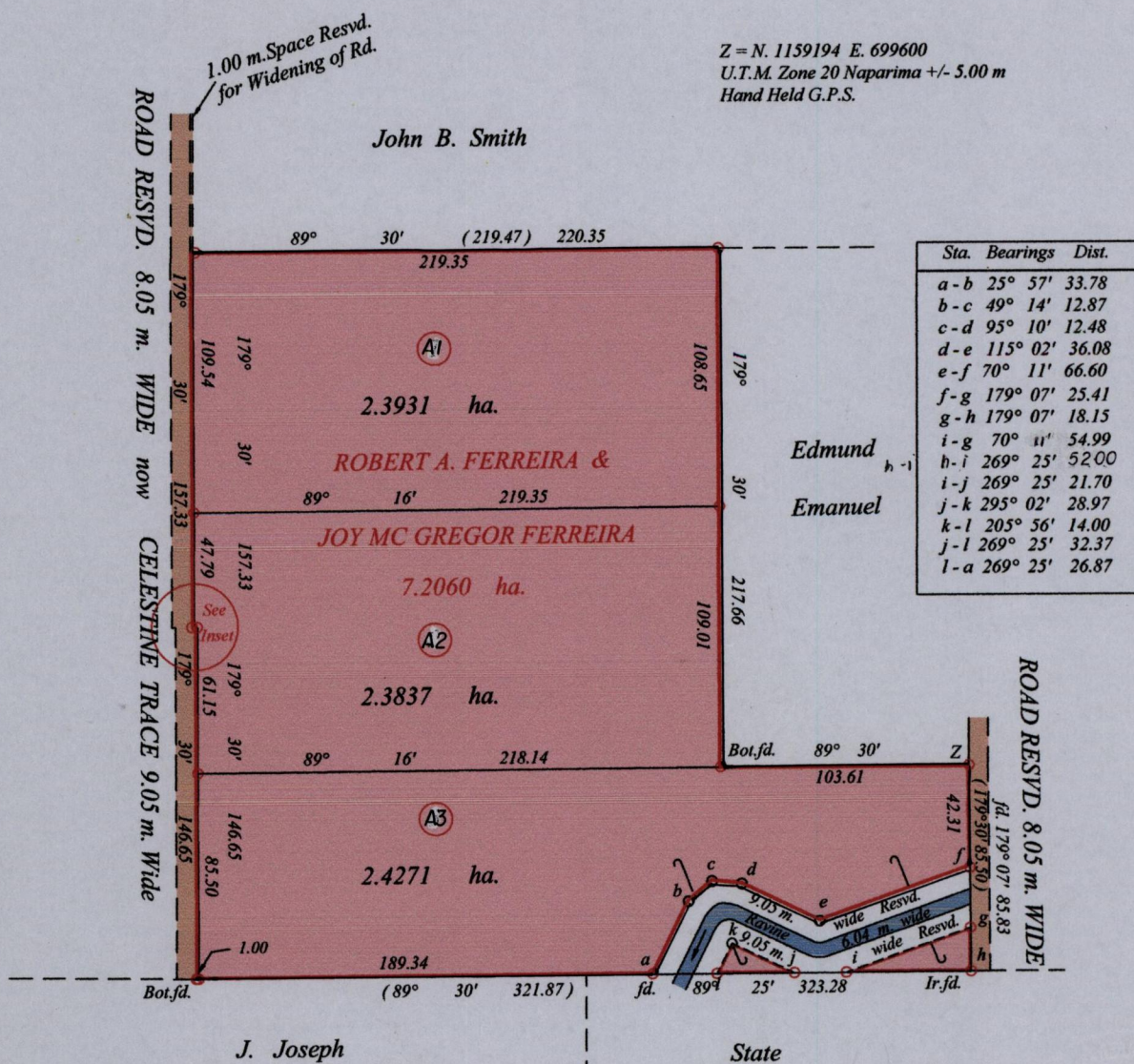
1054

1001

PROCESS ID # 76598  
R.P.O. Vol. 66 fol. 177  
C.T. Vol. 4793 fol. 471  
Bk. 7 fol. 227

Ward of Tamana  
County of St. Andrew  
Cadastral Sheet (E. 6 D.)  $\frac{35 E}{1/d}$

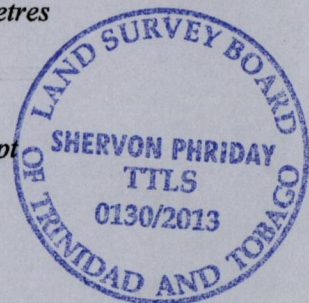
Z = N. 1159194 E. 699600  
U.T.M. Zone 20 Naparima +/- 5.00 m  
Hand Held G.P.S.



Original Survey Bk 7 fol 227

Approved *[Signature]*  
Director of Surveys 10/13/14

Denotes Iron Put Except  
Otherwise Stated



SCALE : 1:3000

Note: Bearings are U.T.M. grid based on solar observations Distances are in metres  
PLAN of 3 Parcels of land coloured pink in the Ward of Tamana  
Containing together seven point two zero three nine hectares  
Surveyed by me, with due authority, in May 2012  
Certified correct in accordance with Regulation 25 (1) of the Land Surveyors  
Regulations 1998,

Checked by *[Signature]* 22-01-2014

Entered on ..... Trinidad & Tobago Land Surveyor *[Signature]* October 22nd 2013