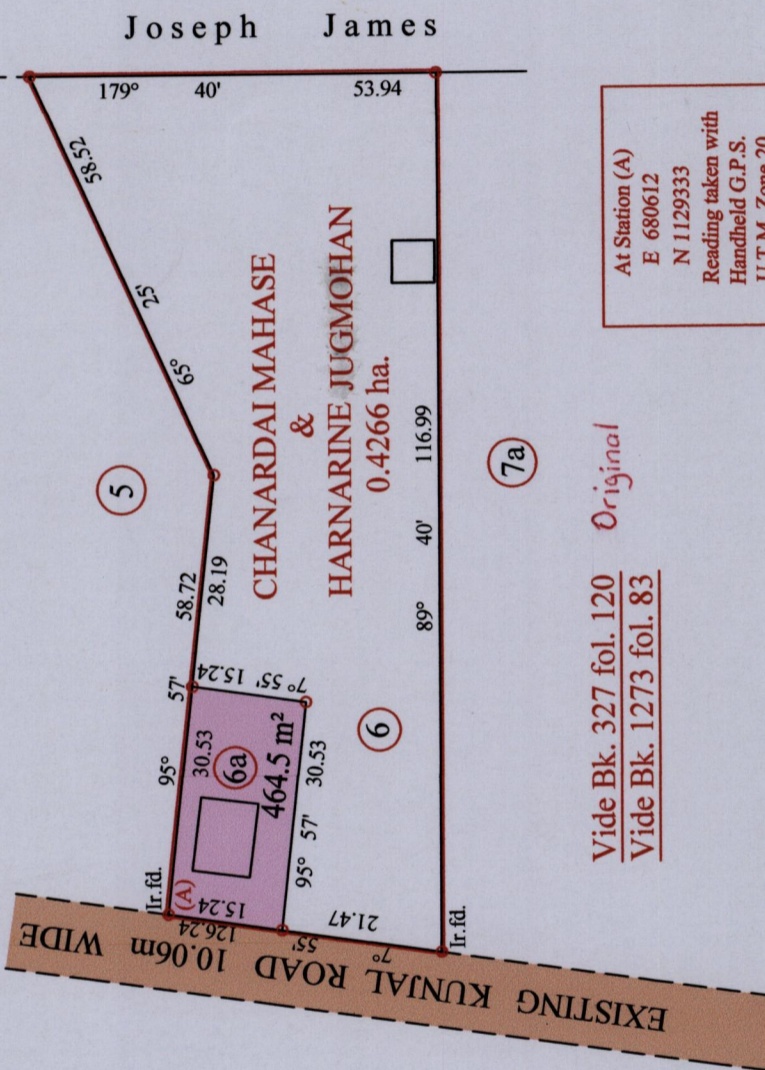


R.P.O. Vol. 1 Fol. 435
C.T. Vol. 5230 Fol. 499

Ward of Savana Grande
County of Victoria
Cadastral Sheet G.9.P. 64 B
3/a

1654

10



At Station (A)
E 680612
N 1129333
Reading taken with
Handheld G.P.S.
U.T.M. Zone 20
Naparima
+ 5 m.



Vide Bk. 327 fol. 120
Vide Bk. 1273 fol. 83
Original

SCALE : 1:1000

Distances are in metres
PLAN of a Parcel of land colored pink in the Ward of Savana Grande
Containing four hundred and sixty four point five square metres
Surveyed by me, with due authority, in June 2012
Certified Correct in accordance with Regulation 25 (1) of the Land Surveyors' Regulations 1998,

Approved
Director of Surveys 16/12/12

o Denotes Iron put except stated otherwise.

Checked by
Entered on Trinidad & Tobago Land Surveyor (T.T.L.S.) 2013

1654/10