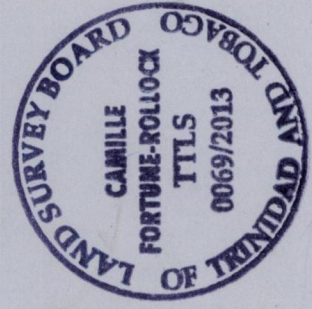


1654

PROCESS ID # 74583
R.P.O. Vol. 518 Fol. 177
C.T. Vol. 1626 Fol. 487



Approved by *Director of Surveys* 10/12/13

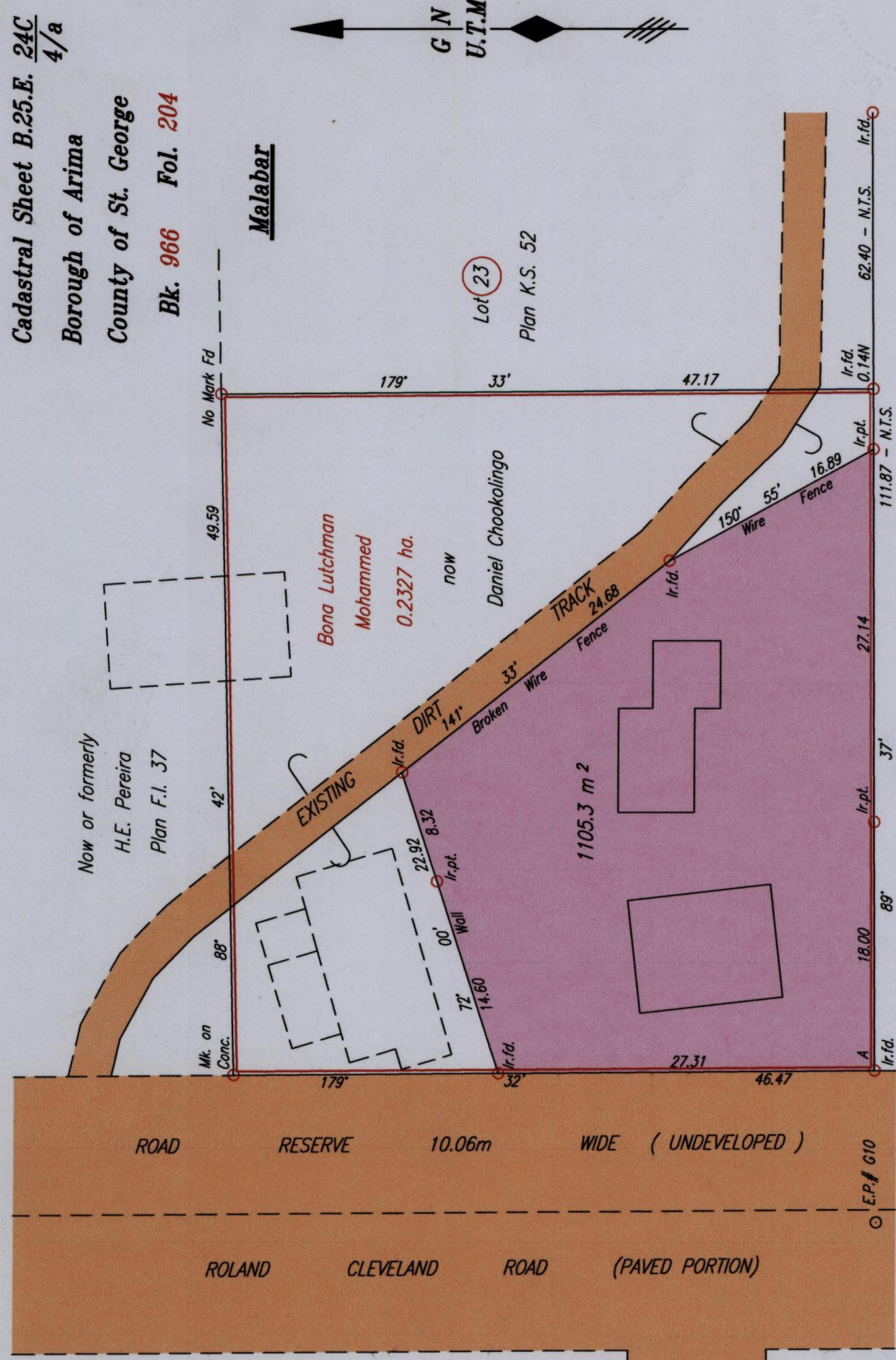
Bearings are U.T.M. Grid based on Solar Observations
To obtain Cassini Bearings add 18'

PLAN of a Parcel of land coloured pink in the Borough of Arima
Containing one thousand one hundred and five point three square metres
Surveyed by me, with due authority, in January 2013
Certified Correct in accordance with Regulation 25 (1) of The Land Surveyors' Regulations 1998,

Checked by
Entered on

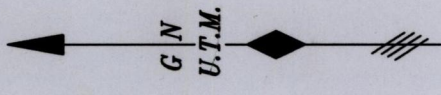
Camille Fortune-Rollock TTLS

Trinidad & Tobago Land Surveyor 1st March 2013
C:\LESS 2013\TRINIDAD\CAMILLE.FORTUNE.dwg



Cadastral Sheet B.25.E. 24C
4/a
Borough of Arima
County of St. George
Bk. 966 Fol. 204

Malabar



Original Survey Bk. 966:204

Coordinates of A (I.r.id.): 0688681 mE, 1174054mN
U.T.M. 20 WGS 84 (+/- 5.00m)
G.P.S. Direct Observation

SCALE 1:500
Distances are in METRES