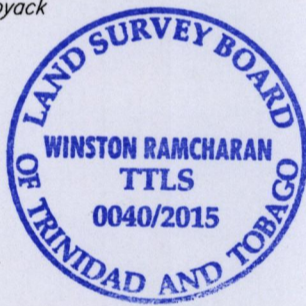
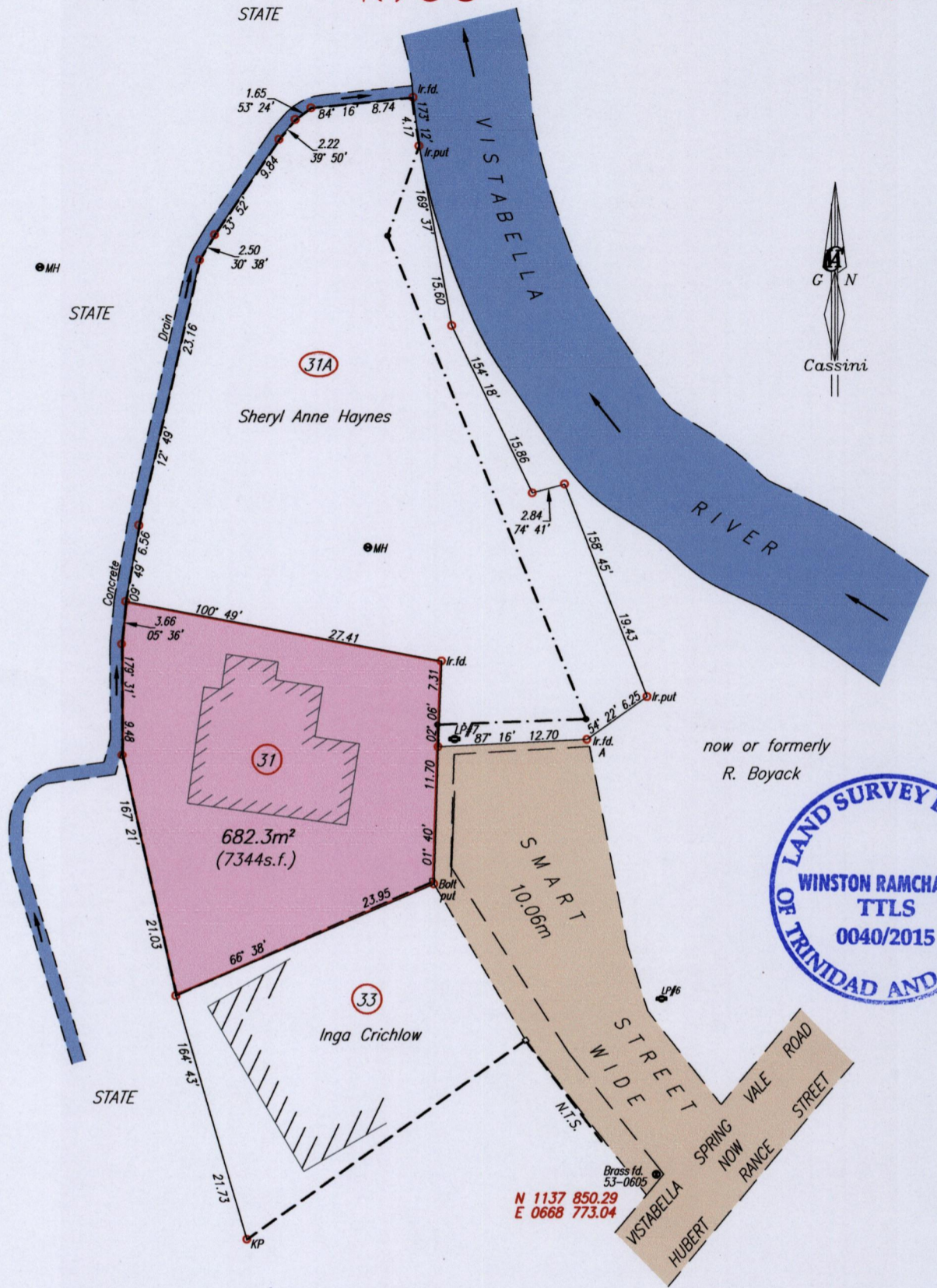


1653

137



A - LP#6	163° 57'	23.05
A-Brass	144° 53'	233.01
A	N 1138 229 E 0668 773	Hand Held GPS WGS84 Zone20

MH - Manhole  
--- Wall  
- - - Wire Fence

SCALE 1/500  
Distances are in metres

Approved.....  
Director of Surveys

○ Denotes Nail Put unless otherwise stated  
Bearings are Cassini Grid based on Solar Observations  
Plan of a Parcel of land coloured pink in the City of San Fernando  
Containing six eight two point three square metres  
Surveyed by me, with due authority, on 17<sup>th</sup> May 2014 for Anthony Haynes and Suzette Haynes  
Certified Correct In accordance with Regulation 25 (1) of the Land Surveyors' Regulations 1998,

Checked by.....

Entered On.....

Winston Ramcharan  
Trinidad & Tobago Land Surveyor. 29<sup>th</sup> May 2015



1653/137