

1653/12

1653

Cadastral Sheet B.17.N 23B

Ward of St. Anns

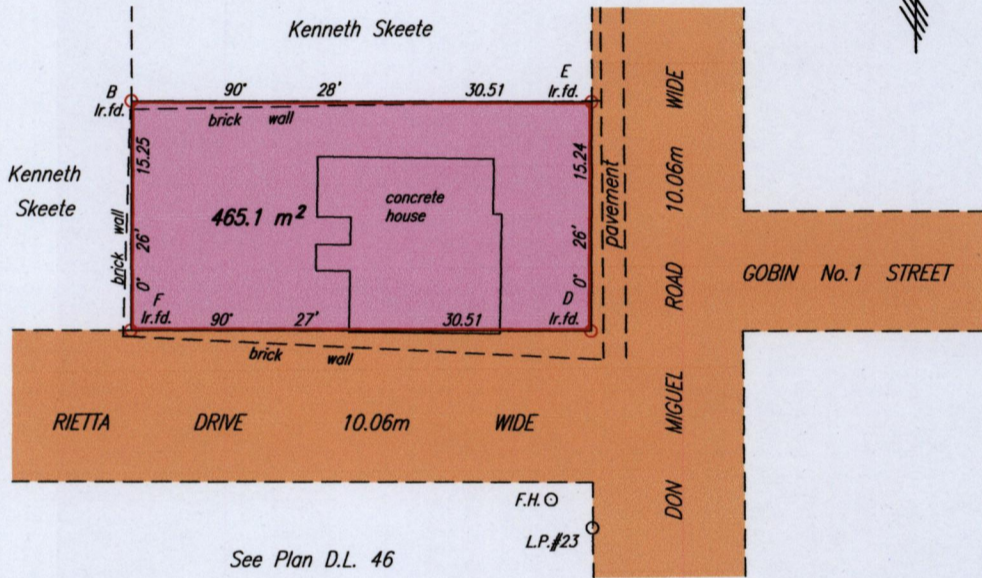
County of St. George

2/b

125

To be brought under the provisions of the Real Property Ordinance

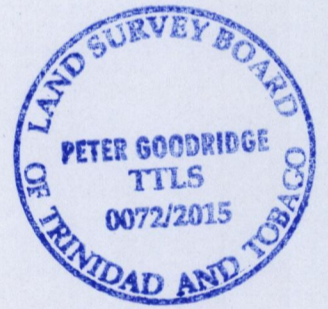
SAN JUAN



LEGEND

From	To	Bearing	Distance
D	- F.H	193° 41'	11.50
D	- LP#23	179° 56'	13.06

Coordinates of F (lr.fd.): 0668653mE, 1176748mN
U.T.M 20 Naparima (+/- 4.00m)
G.P.S. Direct Observation



Reference: See Bk. 1096 Fol. 70

Approved *[Signature]*
Director of Surveys 15/4/15

SCALE 1:500
Distances are in METRES

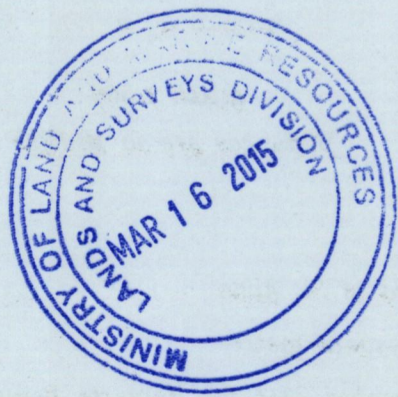
- Denotes Iron put except where otherwise stated
- Bearings are U.T.M. Grid based on Solar Observations

PLAN of a Parcel of land coloured pink in the Ward of St. Anns
Containing four hundred and sixty five point one square metres
Surveyed by me, with due authority, on 26th September 2014 for Margaret Daniel
Certified Correct in accordance with Regulation 25 (1) of The Land Surveyors Regulations 1998,

Checked by . *R-01/04/15*

[Signature] TTLS

Entered on



1652/125