

To be brought under the provisions of the Real Property Ordinance.

Cadastral Sheet B.24.C. 24B  
4/b

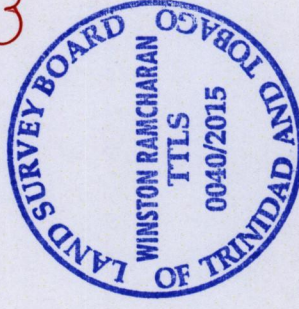
Ward of Arima

County of St. George

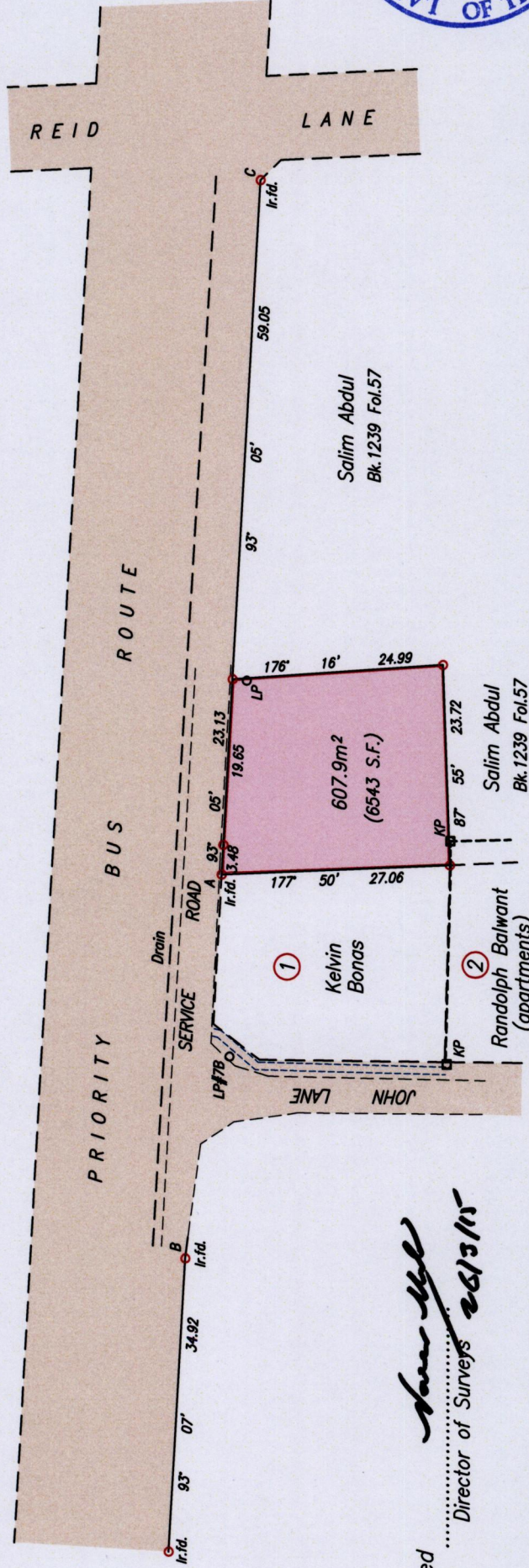
D'Abadie



1653



120



Wall

C Ir. fd. N 1175130 Hand Held GPS +/- 5m  
E 685763 UTM proj. WGS84 datum

SCALE 1/750

Distances are in metres

Station	Bearing	Distance	Station
A	275° 20'	45.73	B
A	267° 26'	21.57	LP/7B

Approved *[Signature]*  
Director of Surveys 26/3/15

o Denotes Iron put unless stated otherwise

Bearings are Cassini Grid based on Solar Observations

PLAN of a Parcel of land coloured pink in the Ward of Arima

Containing six hundred and seven point nine square metres

Surveyed by me with due authority on January 26th 2014 for Nicholasia Sutherland & William Sutherland

Certified Correct in accordance with Regulation 25 (1) of the Land Surveyors' Regulations 1998,

Checked by .....

Entered on .....

*Winston Ramcharan*

Trinidad & Tobago Land Surveyor.....25<sup>th</sup> February.....2015

1653/120

