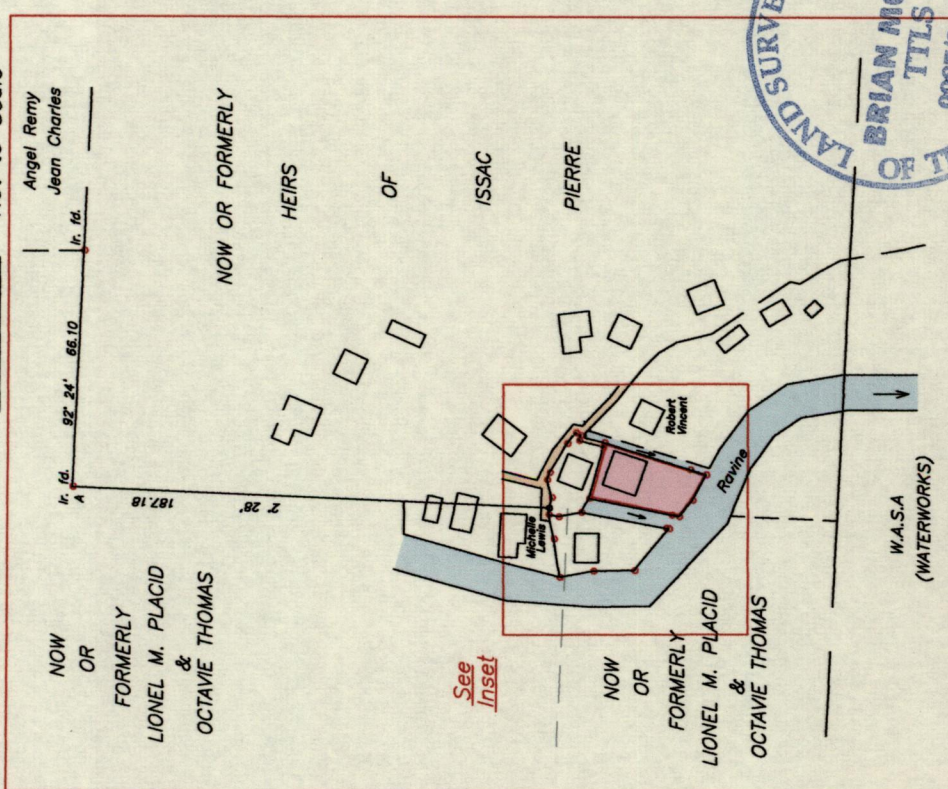


U.P.R.N.....

To be brought under the provisions of The Real Property Ordinance

Cadastral Sheet A.20.C 13E 1/c  
Ward of St. Anns  
County of St. George

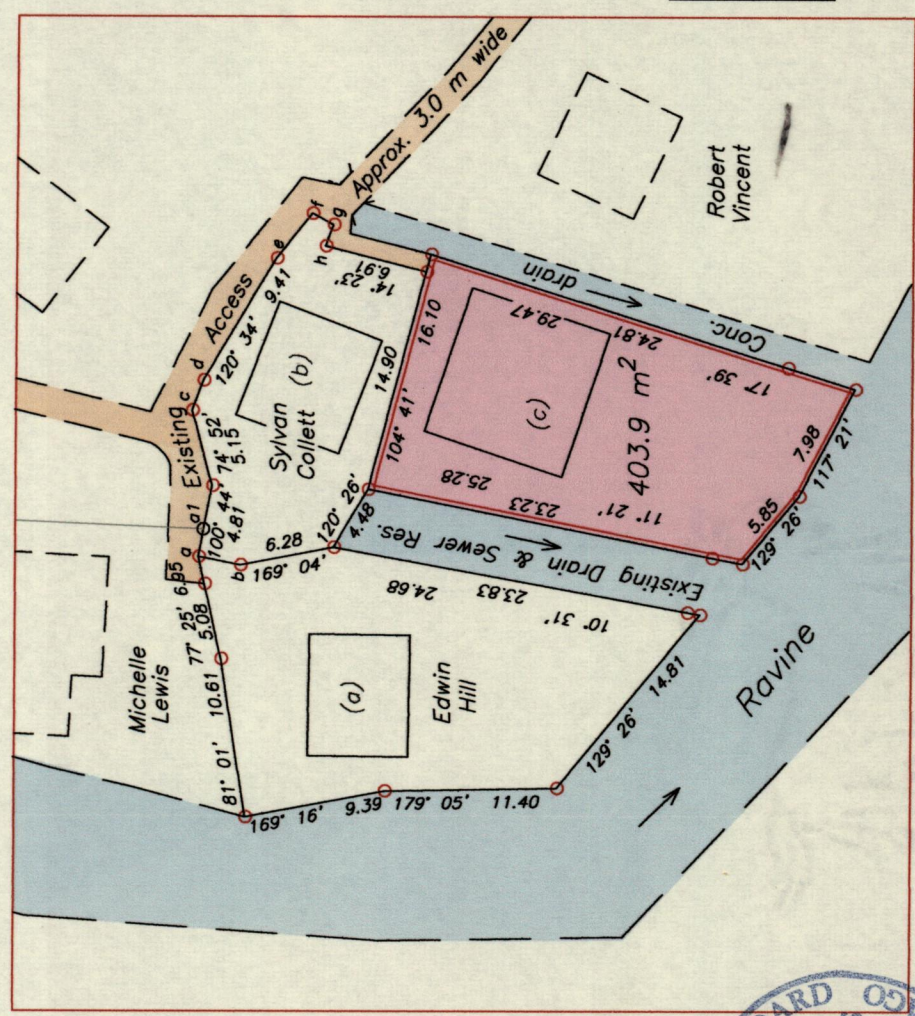
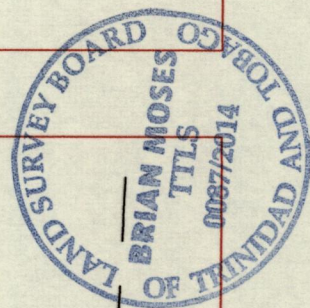
Location Plan Not to Scale



Approved .....  
*Samuel*  
 Director of Surveys 573/11

- Denotes Peg put unless otherwise stated
- Denotes Iron put unless otherwise stated
- Bearings are U.T.M. Grid based on Solar Observations

Plan of a Parcel of land coloured pink in the Ward of St. Anns  
 Containing four zero three point nine square metres  
 Surveyed by me, with due authority, on 23rd November, 2012 for Clayton Collette  
 Certified correct in accordance with Regulation 25 (1) of the Land Surveyors' Regulations 1998

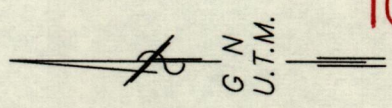


a - N 1181750  
 E 663617  
 Derived From Hand-Held GS (+/-5 m)  
 UTM Zone 20 Naparima Co-ordinates

SCALE 1:500  
 Distances are in METRES

Legend	
a - b	191° 32' 2.84
c - d	110° 09' 2.12
e - f	128° 19' 3.80
f - g	208° 12' 1.60
g - h	290° 41' 1.51
h - a	100° 44' 1.86
a <sub>1</sub> - A	2° 28' 187.18

Ref.  
 Plan J.B. 55  
 Plan K.A. 29  
 Plan K.A. 18



1653

118

Checked by *Raymond* 10/3/2013  
 Entered on .....  
 Trinidad & Tobago Land Surveyor (T.T.L.S.)  
*Raymond*  
 22nd October 2014

1653/118

