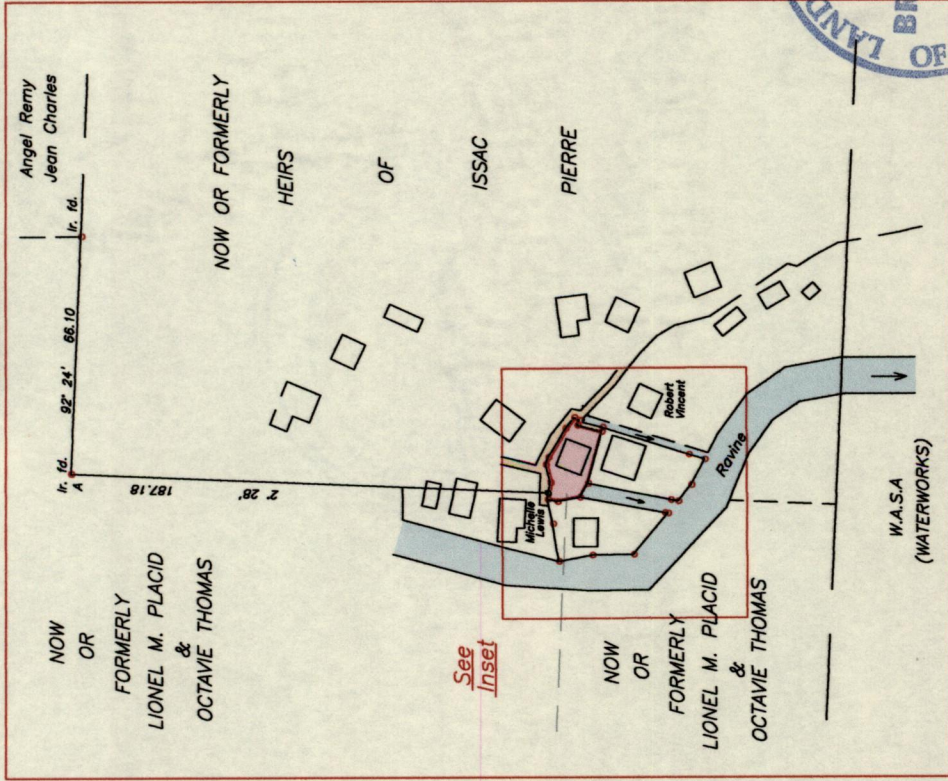


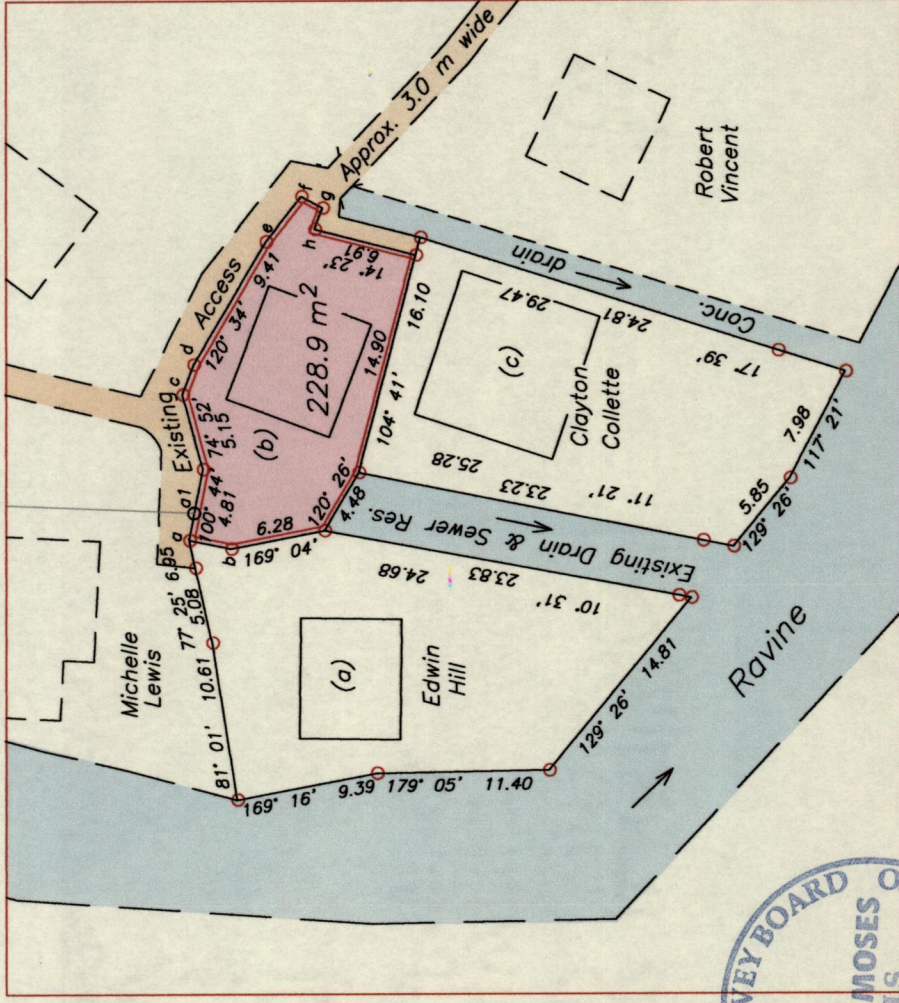
1653

117

Location Plan Not to Scale



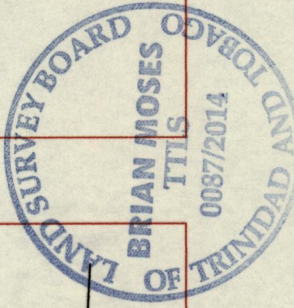
Inset



Ref.	Plan J.B. 55	Plan K.A. 29	Plan K.A. 18
a - b	191° 32'	2.84	
c - d	110° 09'	2.12	
e - f	128° 19'	3.80	
f - g	208° 12'	1.60	
g - h	290° 41'	1.57	
a - a <sub>1</sub>	100° 44'	1.86	
a <sub>1</sub> - A	2° 28'	187.18	

a - N 1181750  
E 663617  
Derived From Hand-Held GS (+/-5 m)  
UTM Zone 20 Naparima Co-ordinates

SCALE 1:500  
Distances are in METERS



Approved .....  
Director of Surveys *15/13/14*

- o Denotes Peg put unless otherwise stated
- o Denotes Iron put unless otherwise stated
- o Bearings are U.T.M. Grid based on Solar Observations

Plan of a Parcel of land coloured pink in the Ward of St. Anns  
Containing two two eight point nine square meters  
Surveyed by me, with due authority, on 23rd November, 2012 for Sylvan Collett  
Certified correct in accordance with Regulation 25 (1) of the Land Surveyors' Regulations 1998

Checked by NH 103-2015 Entered on .....

*Brian Moses*  
Trinidad & Tobago Land Surveyor (T.T.L.S.)  
..... 27<sup>th</sup> October 2014



1653/117

