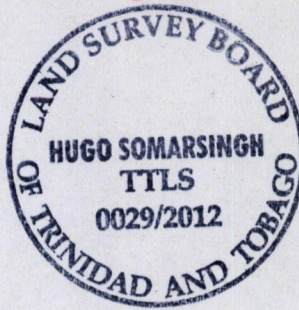


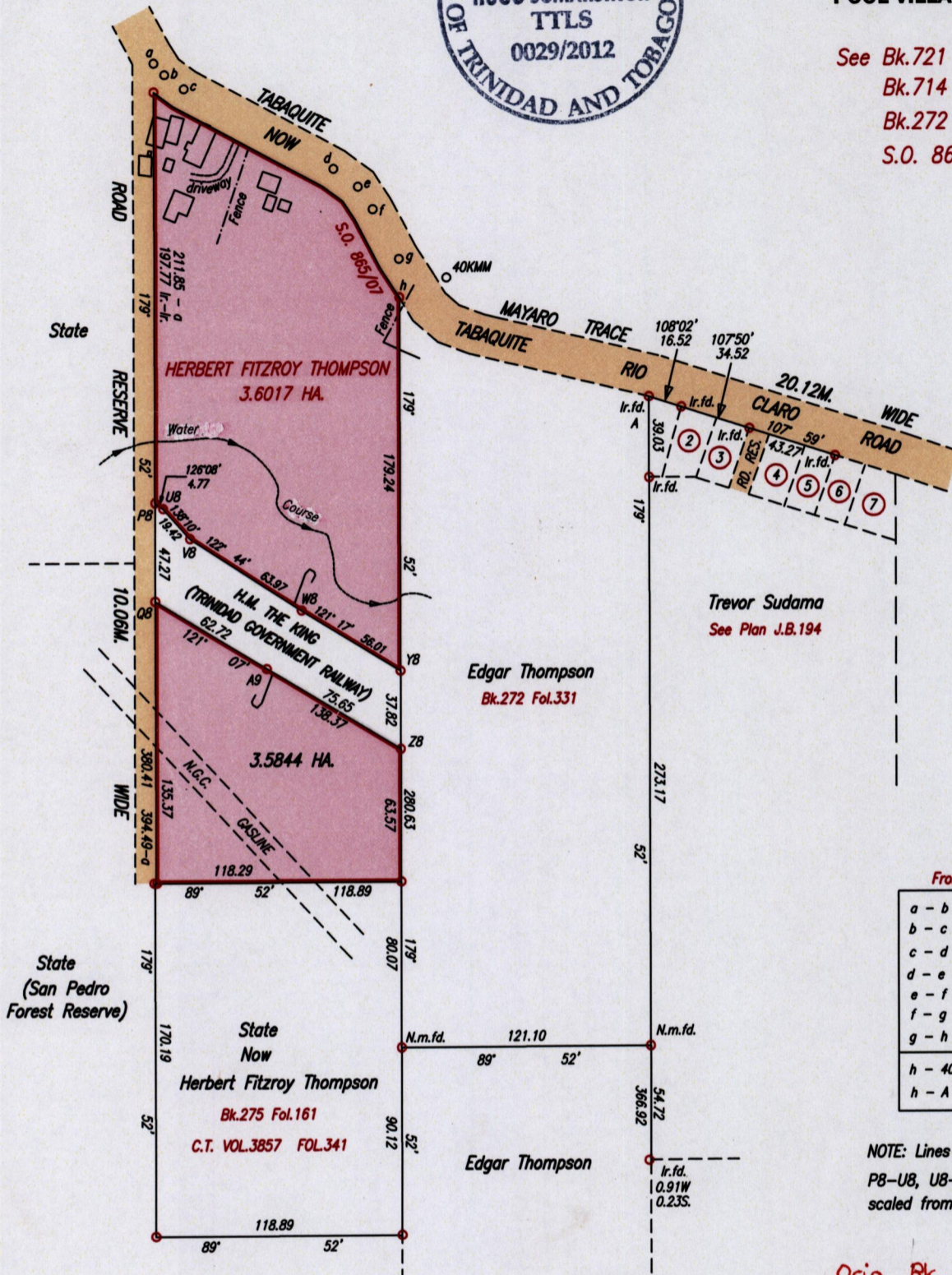
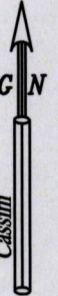
1652 99

R.P.O. Vol. 202 Fol. 81
 C.T. Vol. 3868 Fol. 481
 PROCESS ID # C0401



Ward of Charuma
 County of Nariva
 Cadastral Sheet D.25.K. 55A
 1/d
POOL VILLAGE

See Bk.721 Fol.115
 Bk.714 Fol.30
 Bk.272 Fol.326
 S.O. 865/1907



LEGEND
 From S.O. 865/07

a - b	136° 48'	7.64
b - c	126° 21'	11.67
c - d	118° 14'	81.88
d - e	126° 24'	14.69
e - f	146° 48'	13.08
f - g	152° 19'	27.16
g - h	179° 26'	18.65 fd.
h - 40kmm	67° 25'	24.78
h - A	111° 42'	130.45

NOTE: Lines Z8-A9, A9-Q8
 PB-UB, UB-V8, V8-W8, W8-Y8
 scaled from Plan in Bk.714 Fol.30

Orig Bk. 721: 115

SCALE 1/3000
 Distances are in Metres.

Iron A
 692876 mE, 1142485 mN
 U.T.M. 20, Nap. (+/- 3.0m.)
 G.P.S. (Handheld)

Approved
 Director of Surveys 28/11/13

- Denotes no mark put
- Denotes Iron put unless otherwise stated

Bearings are Cassini Grid based on solar Observations

PLAN of a Parcel of land coloured pink in the Ward of Charuma
 Containing three point five eight four four hectares
 Surveyed by me, with due authority, in November, 2012.

In accordance with Regulation 25 (1) of The Land Surveyors' Regulations 1998,
 I certify that this plan is correct.

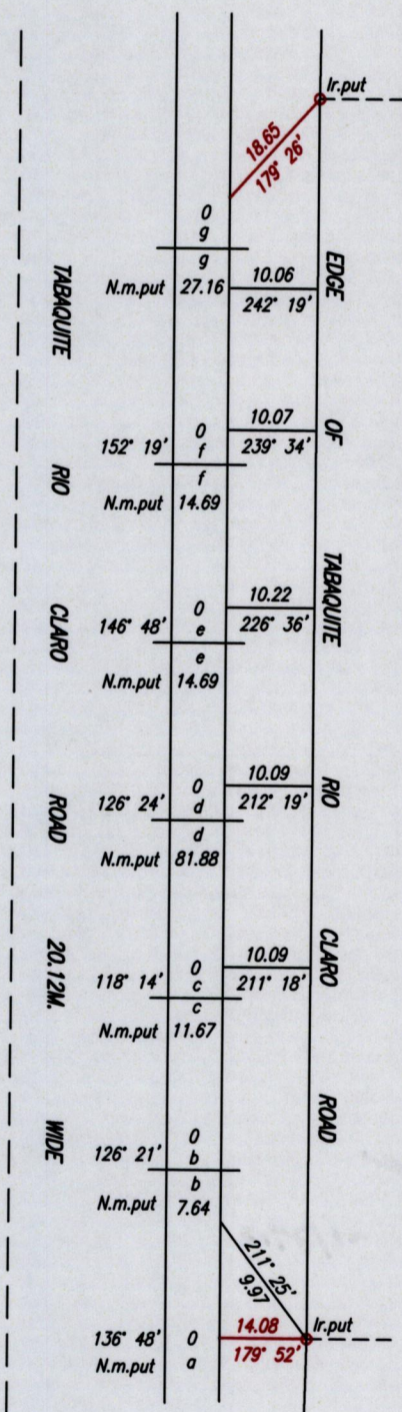
Checked by *mm* 23/7/2013

Entered on Trinidad & Tobago Land Surveyor 27th November 2012

H. Somarsingh

00 1625

TABAQUITE RIO CLARO ROAD OFFSETS



1652/99