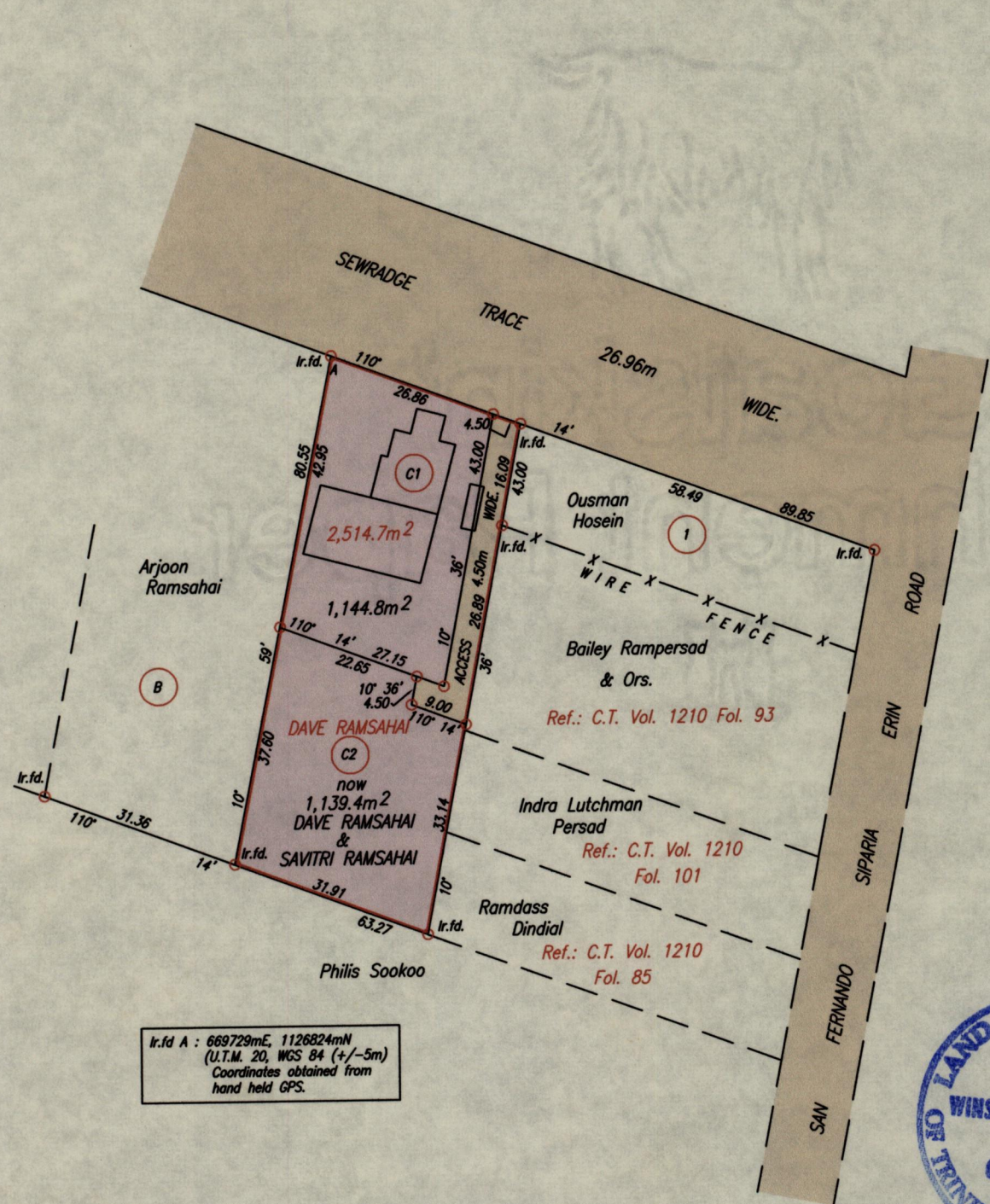


1652 1652

97

Process ID# 69808
R.P.O. Vol. 56 Fol. 413
C.T. Vol. 3679 Fol. 247
Ref.: Bk. 1219 Fol. 157

Cadastral Sheet G.13.B. 63F
Ward of Naparima 1/a
County of Victoria
Debe



U.T.M.
G
W

Ir.f.d. A : 669729mE, 1126824mN
(U.T.M. 20, WGS 84 (+/-5m))
Coordinates obtained from
hand held GPS.



Orig Bk. 1219 : 157

Approved *[Signature]*
Director of Surveys *[Signature]*

SCALE 1:1000
Distances are in Metres

○ Denotes Iron put except otherwise stated.
Bearings are U.T.M. Grid based on Solar Observations.
PLAN of 2 Parcels of land coloured pink in the Ward of Naparima
Containing together two thousand, two hundred and eighty four point two square metres
Surveyed by me, with due authority, in December, 2012
Certified Correct in accordance with Regulation 25(1) of the Land Surveyors' Regulations 1998,

Checked by *[Signature]* Winston Ramcharan
Entered Trinidad & Tobago Land Surveyor . 12th June 2013