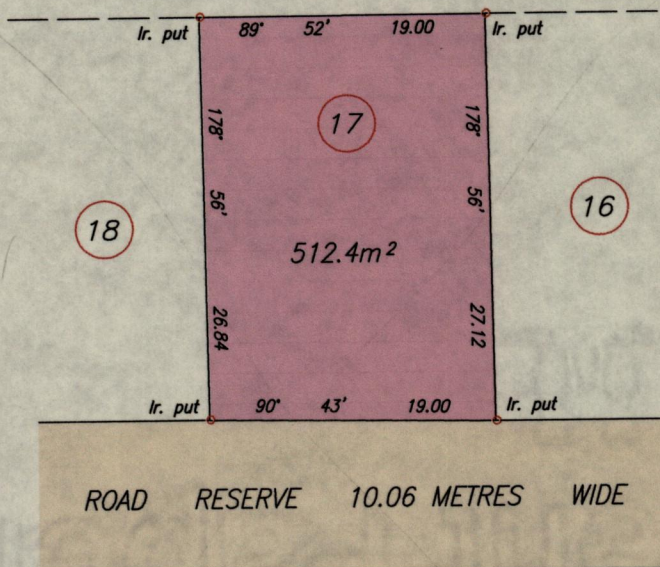


R.P.O. Vol. 20 Fol. 637
C.T. Vol. 2953 Fol. 341

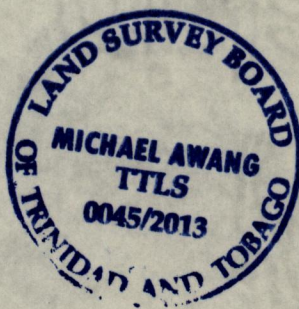
Cadastral Sheet D.5.1. ^{34C}/_{2/a}
Ward of San Rafael
County of St. George

G N
Cassini

STATE
then
J. Pantin



Orig. Plan G.A.37



Approved.....
Director of Surveys
22/7/13

SCALE: 1/500

Distances are in metres

Bearings are Cassini Grid based on Solar Observations

PLAN of a parcel of land coloured pink in the Ward of San Rafael
Containing five hundred and twelve point four square metres
Surveyed by me, with due authority, in February 1988 for Krishna Ramai.
Certified correct in accordance with regulation 25 (1) of the Land Surveyors' Regulations 1998,

Checked by.....

[Signature] T.T.L.S
17th April, 2013

Entered on.....