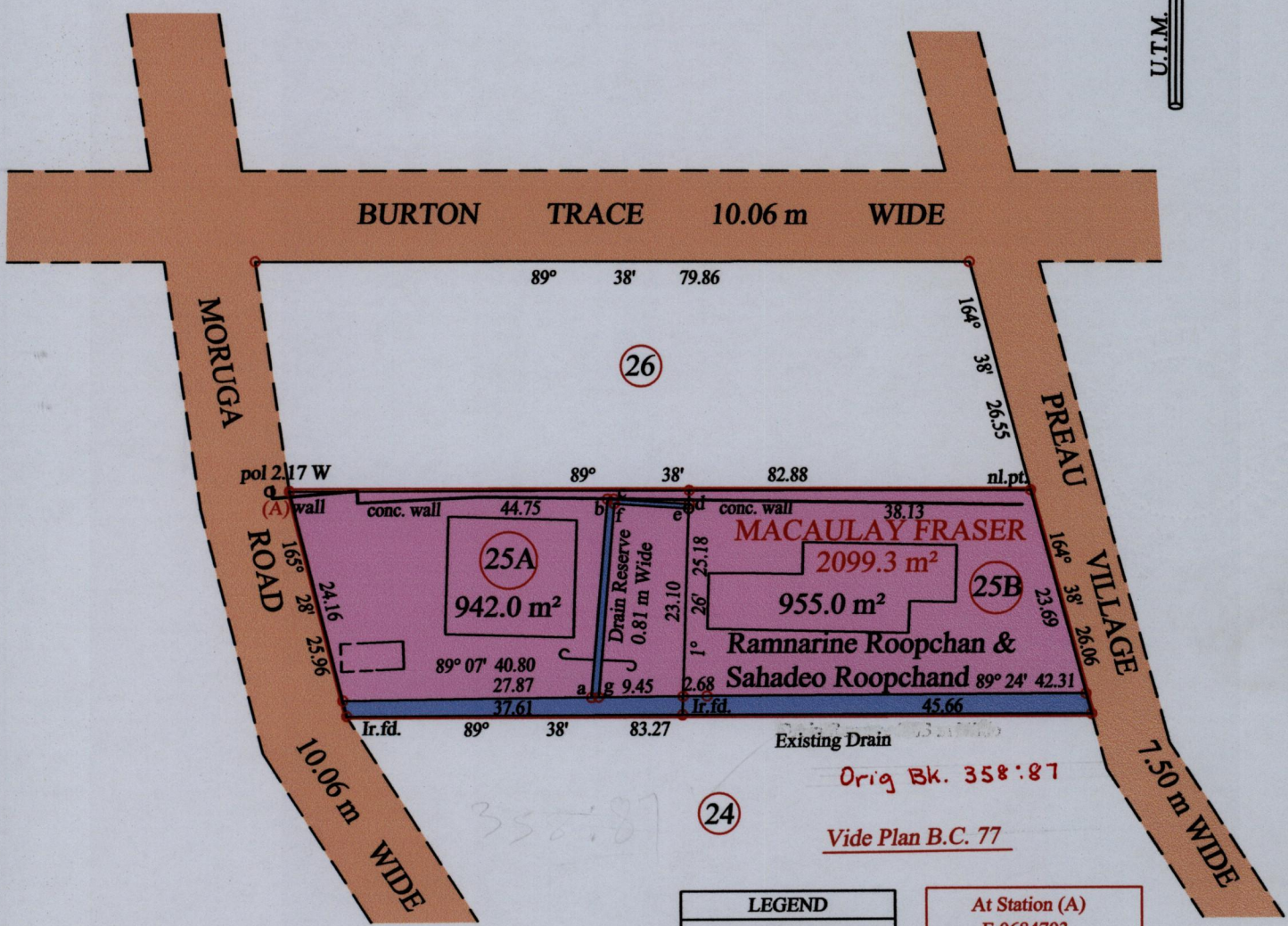


1652

89

R.P.O. Vol. 193 Fol. 1
C.T. Vol. 2898 Fol. 269

Ward of Ortoire
County of Victoria
Cadastral Sheet G.10.N 64.B.
PREAU VILLAGE 4/d

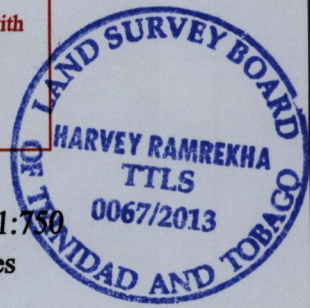


24

LEGEND		
a - b	04° 35'	22.29
b - c	90° 51'	0.69
c - d	93° 47'	8.45
d - e	01° 44'	0.50
e - f	93° 47'	8.36
f - g	04° 35'	21.77
g - a	89° 25'	0.80

At Station (A)
E 0684703
N 1128286
Reading taken with
Handheld G.P.S.
U.T.M. Zone 20
Naparima
± 5 m.

Approved *[Signature]*
Director of Surveys 4
16/9/13



SCALE : 1:750

○ Denotes Iron put except stated otherwise.
Note: Bearings are U.T.M. grid based on solar observations Distances are in metres
PLAN of 2 Parcels of land coloured pink in the Ward of Ortoire
Containing together one thousand eight hundred and ninety seven point zero square metres
Surveyed by me, with due authority, in October 2011
Certified Correct in accordance with Regulation 25(1) of the Land Surveyors Regulations 1998

Checked by *[Signature]* 14/6/13

Entered on Trinidad & Tobago Land Surveyor 30.04 2013