

1652

88

R.P.O. Vol. 200 fol. 209

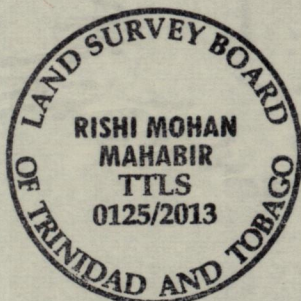
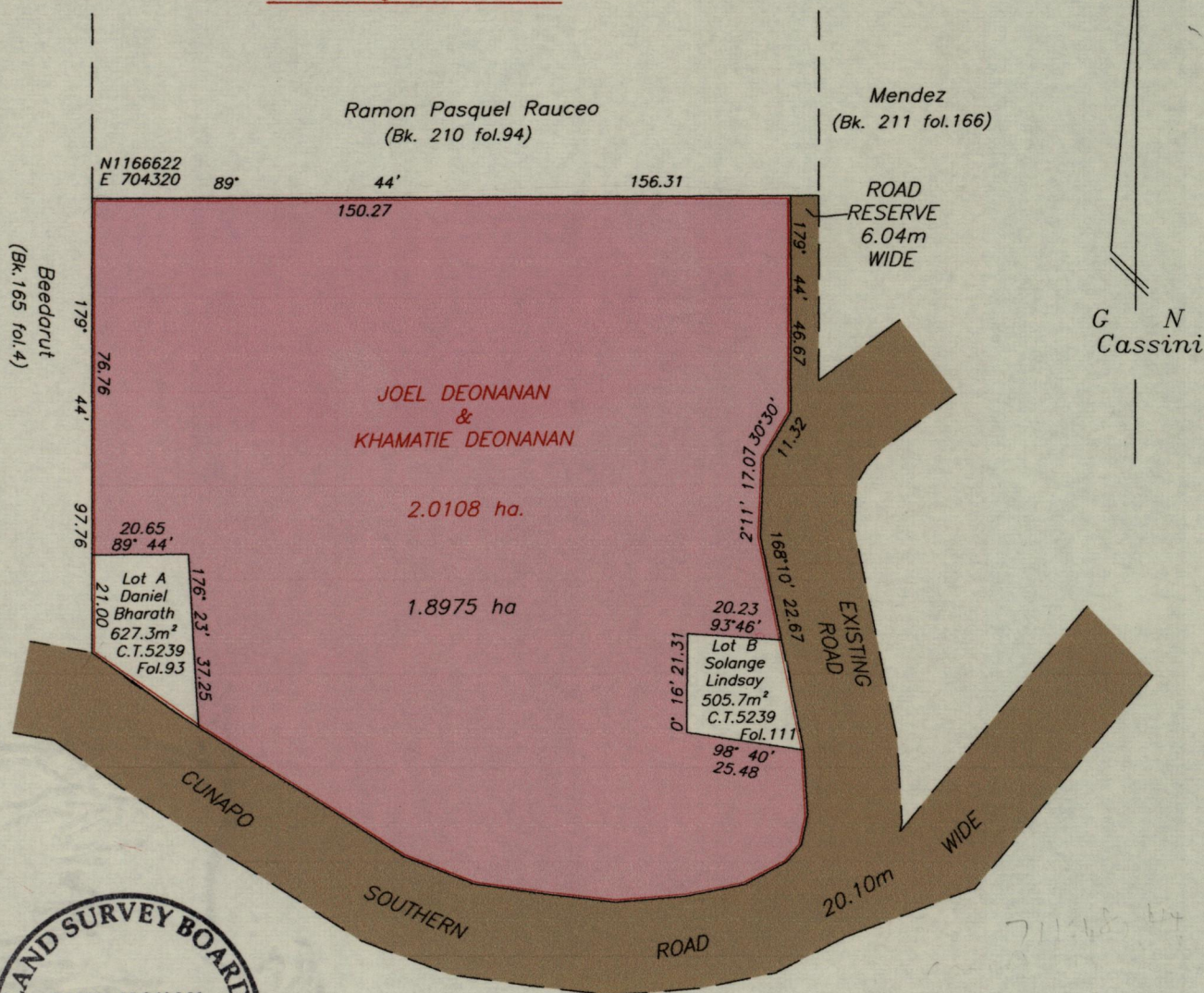
Cadastral Sheet E.2.1 <sup>35C</sup>/<sub>1/b</sub>

C.T. Vol. 3060 fol. 191

Ward of Turure

County of St. Andrew

Remaining Portion Plan



Co-ordinates are U.T.M. zone 20N Naparima Datum +/-5m scaled from a 1/10000 ward sheet

Approved

*James High*

Director of Surveys  
16/7/13

SCALE 1/1500

Distances are in metres

This is a true copy of a plan of two point zero one zero eight hectares originally transferred to Joel Deonanan and Khamatie Deonanan showing a portion coloured pink and containing one point eight nine seven five hectares being the remainder after two previous transfers of other portions of the land, Prepared by me, with due authority, in July 2013

In accordance with Regulation 25 (1) of the Land Surveyors' Regulations 1998, I certify that this plan is correct.

Checked by.....

*Rishi Mohan Mahabir*

Entered..... Trinidad & Tobago Land Surveyor..... 2<sup>nd</sup> July 2013.....

117524

171024