

1652

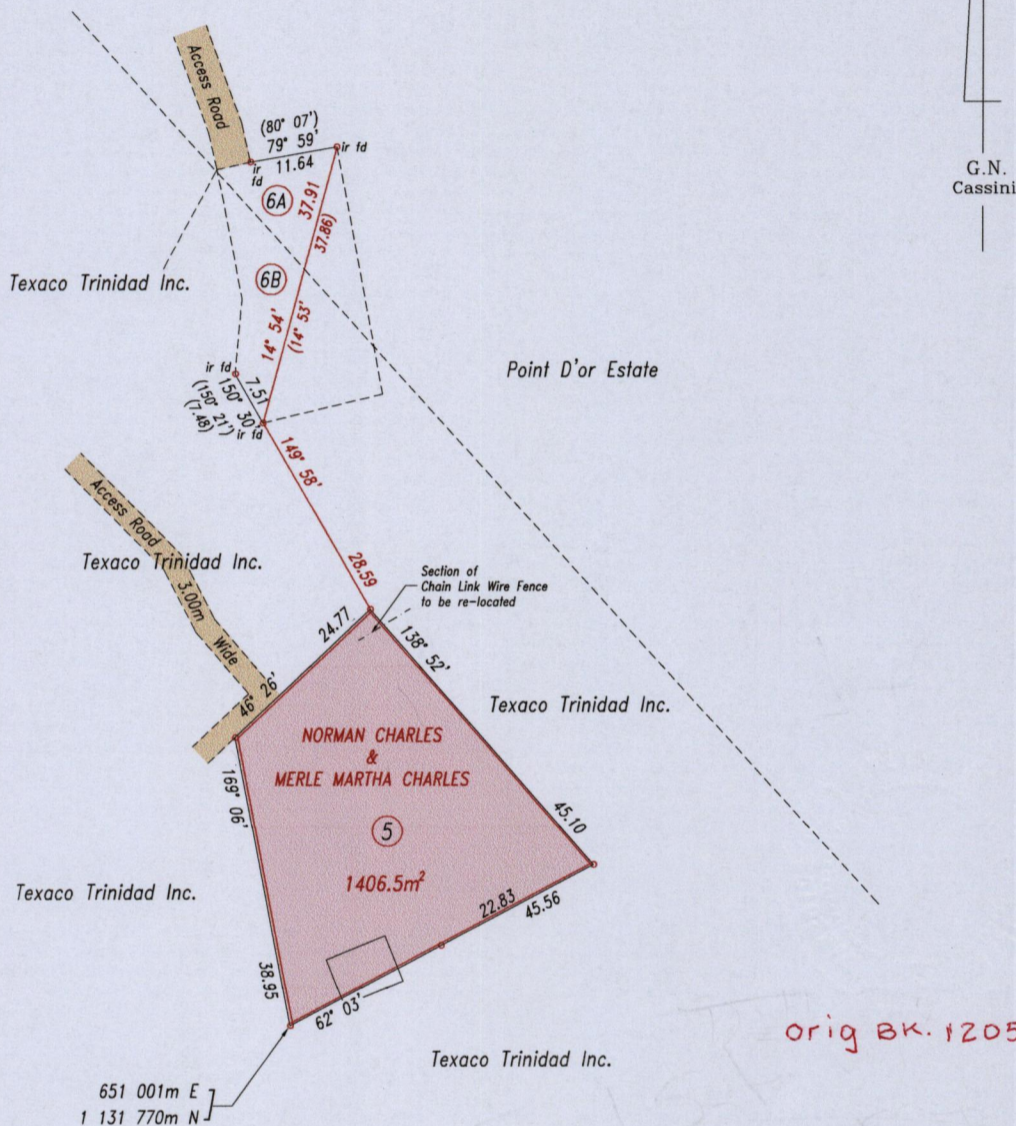
71

C.T. Vol. 63 Fol. 65
C.T. Vol. 5093 Fol. 41
U.P.I.N. No.:

Ward of La Brea
County of St. Patrick
Cadastral Sheet F.10.H. 62B
2/b/3

Coordinate Information
Source: GPS (Hand Held)
Error Statement: +/- 5m
Datum: Naparima, UTM (Zone 20).

Reference: Plan J.F. 151



Approved

Lynn Roopchand

Director of Surveys
2 July 2013

SCALE 1: 1000

Distances are in metres

Bearings are Cassini Grid based on Solar Observations

o Denotes iron put except otherwise stated

PLAN of a parcel of land coloured pink in the Ward of La Brea

Containing one thousand four hundred and six point five square metres

Redefined by me, with due authority, in April 2013

Certified Correct in accordance with Regulation 25(1) of the Land Surveyors' Regulations 1998.

Checked by

L.A. Roopchand

Entered

Trinidad & Tobago Land Surveyor 24/4/2013

