

1052

66

U.P.I.N. No.

Cadastral Sheet  $\frac{24F}{4/c}$ , D.5.E.&I.

Remaining Portion Plan Filed in Vol. 5826 Fol. 139

Ward of San Rafael

CT. Vol. 5570 Fol. 317

CONSOLIDATED PLAN

County of St. George

"L.P. No. 56 BRAZIL LOME TRACE,

PROCESS ID # G3360

BRAZIL VILLAGE"

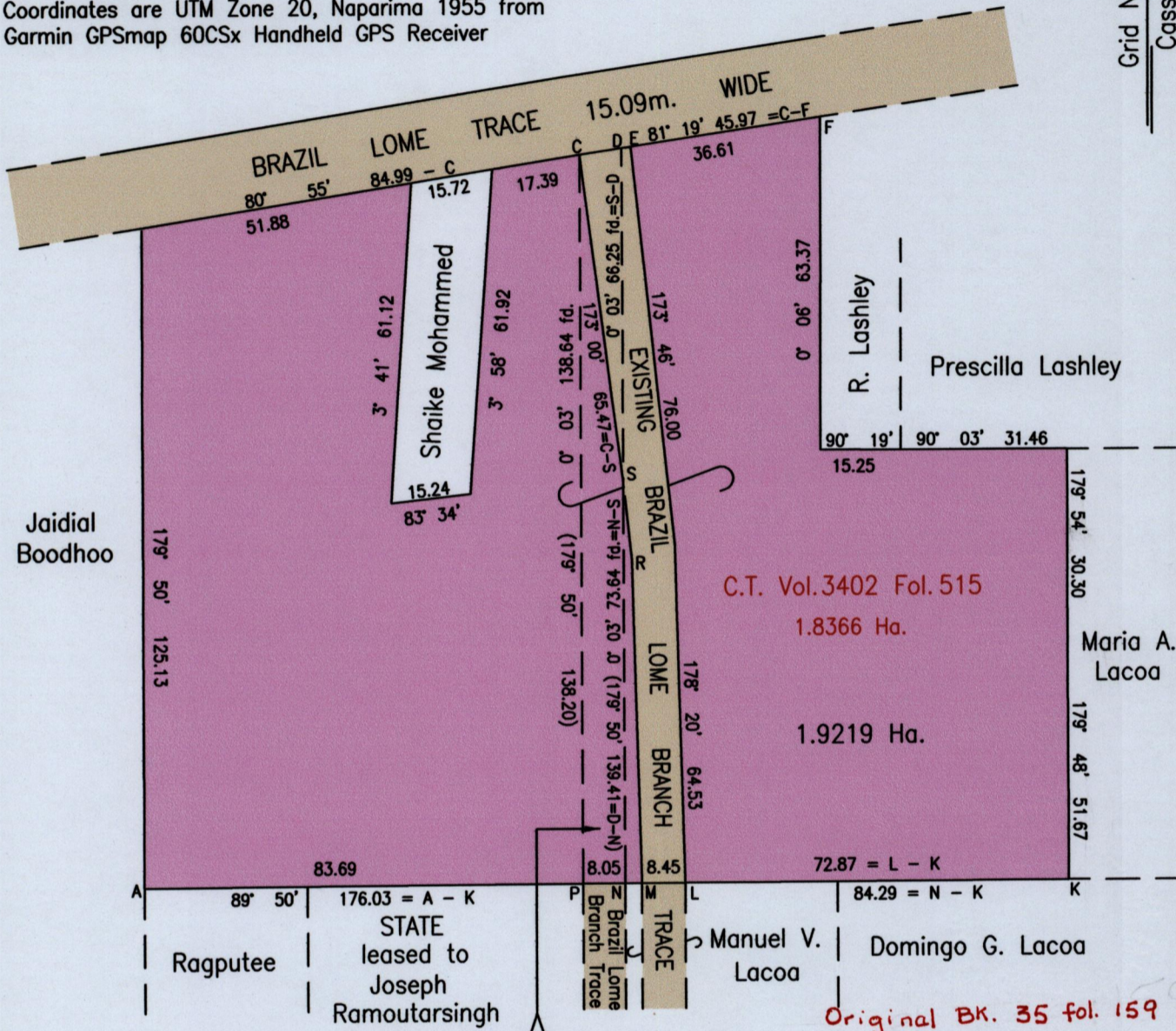
Vide
Bk 1189:139
Plan J.R.76

A	E 688592.18
	N 1167030.15

Reliability Error  $\pm 5.0$  m.

Coordinates are UTM Zone 20, Naparima 1955 from Garmin GPSmap 60CSx Handheld GPS Receiver

Grid North  
Cassini



Approved

*[Signature]*

Director of Surveys 21/2/13

SCALE 1:1250

Distances are in Metres

Bearings are Cassini Grid based on Solar Obs.

Plan of a Parcel coloured pink in the Ward of San Rafael

Containing one point nine two one nine hectares

Prepared by me, with due authority, in February 2013

In accordance with Regulation 25(1) of the Land Surveyors Regulations 1998,

I certify that this plan represents the parcels to be consolidated.

Checked by .....

*[Signature]*

Entered on .....

Trinidad & Tobago Land Surveyor 19<sup>th</sup> February 2013

