

R.P.O. Vol. 133 Fol. 335

C.T. Vol. 3614 Fol. 107

Process Id # G8766

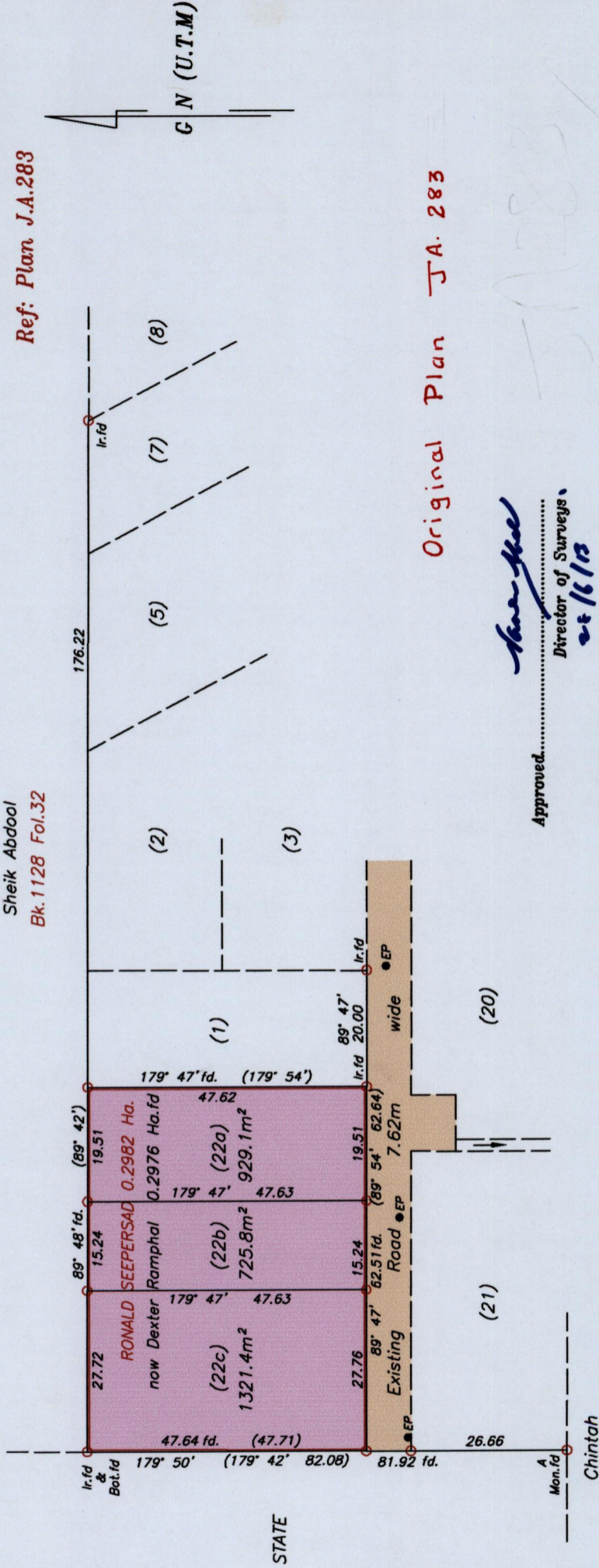
Ward of Siparia

County of St. Patrick

Cadastral Sheet  $\frac{73A}{1/d}$  (G.17.A)

Sheik Abdoal  
Bk. 1128 Fol. 32

Ref: Plan J.A.283



Original Plan J.A. 283

Approved.....  
*Sheik Abdoal*  
Director of Surveys  
22/10/13

A = N 1120357  
E = 660438

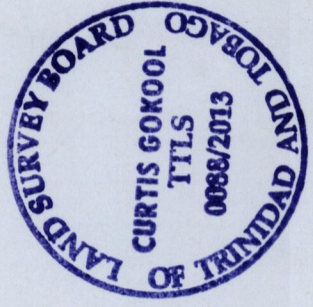
SCALE 1:1000

Distances are in METRES

Notes: U.T.M 20 Naparima (CPS +/- 3.0m)  
○ Denotes Iron put unless otherwise stated  
Bearings are UTM grid based on solar observations  
To obtain Cassini bearings add 18 minutes

PLAN of 3 Parcels of land coloured pink in the Ward of Siparia.  
Containing together two thousand nine hundred and seventy-six point three square metres.  
Surveyed by me, with due authority, in October 2010.  
Certified Correct in accordance with Regulation 25 (1) of the Land Surveyors Regulations 1998.

Checked by.....  
*Lueta Lychood*  
Entered on.....  
Trinidad and Tobago Land Surveyor.....  
March 10.....2013



1652

63

1652/63