

1652

57

RPO Vol.432 Fol. 49  
C.T. Vol. 1838 Fol. 41

Cadastral Sheet G.15.A. 64E/2/a  
Ward of Savana Grande  
County of Victoria

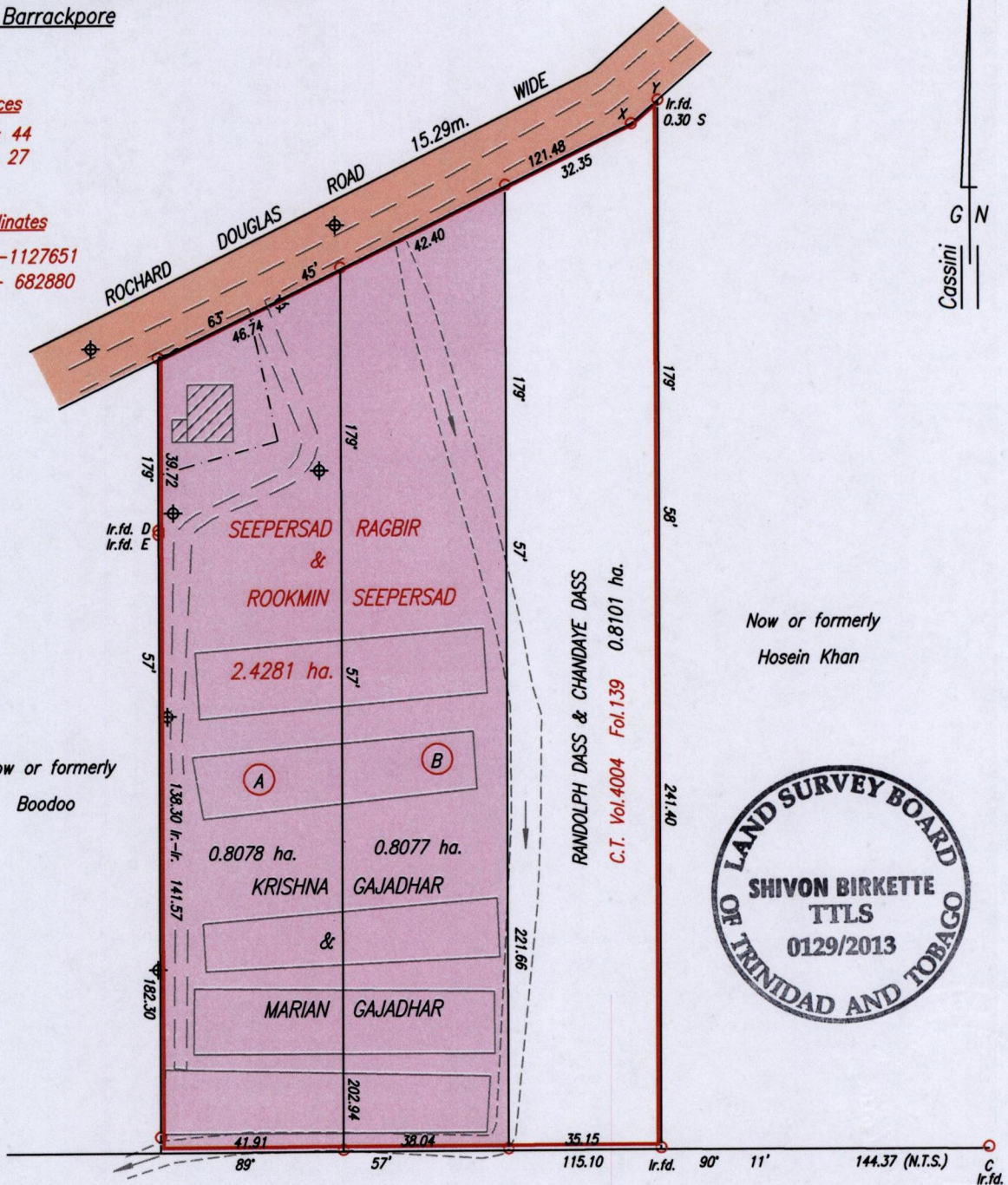
#708 Rochard Douglas Road  
Scale #7, Barrackpore

References

Bk. 1247 : 44  
Bk. 1012 : 27

Co-ordinates

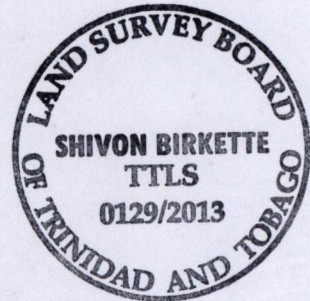
Ir.fd. Y : N-1127651  
: E- 682880



Now or formerly  
Boodoo

Now or formerly  
Hosein Khan

Now or formerly  
M. P. Singh



Legend  
D - E : 179° 57' 1.01  
X - Y : 48° 23' 8.23

See Bk. 1012 : 27

Approved .....  
Director of Surveys *21/1/13*

○ Denotes Iron Put except where stated otherwise  
Co-ordinates are Naparima/UTM (+/-5m), derived using Handheld GPS  
Bearings are Cassini Grid, based on Solar Observations

PLAN of 2 parcels of land coloured pink in the Ward of Savana Grande  
Containing together one point six one five five hectares  
Surveyed by me, with due authority, on October 28th 2012  
Certified correct in accordance with Regulation 25 (1) of the Land Surveyors Regulations 1998.

Checked by. .... *7/1/13*

Entered on. ....

..... *Shivon Birkette* .....

Trinidad & Tobago Land Surveyor. . 29-Jan-2013.

SCALE 1:1500  
Distances are in metres