

1652/31

R.P.O. Vol. 216 Fol. 487

C.T. Vol. 3823 Fol. 17

PROCESS ID # 60621

1652

Ward of Siparia

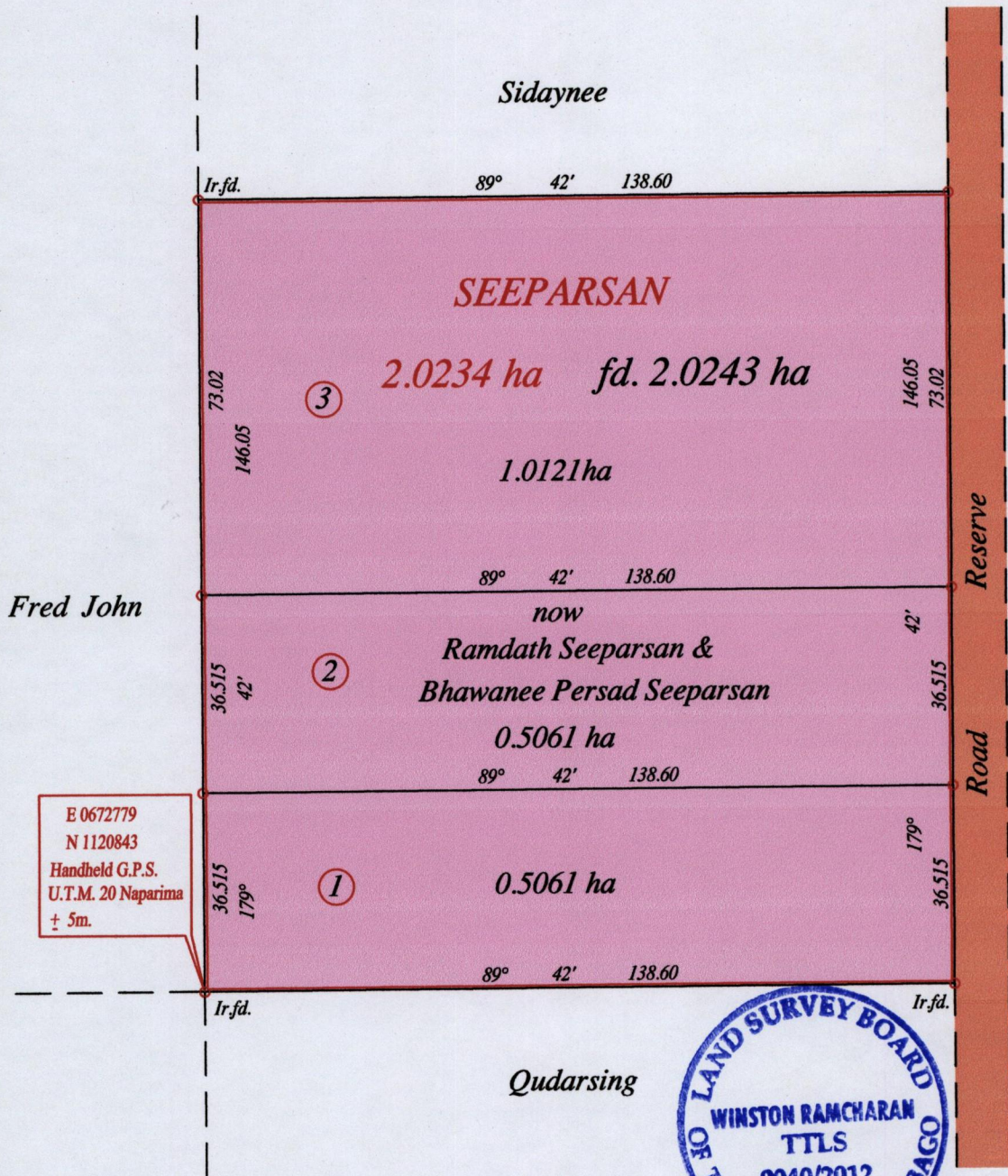
County of St. Patrick

Cadastral Sheet (G 18 D) 73 C  
2/a

51

ROCHARD ROAD, PENAL

U.T.M.  
G N



Approved *[Signature]*  
Director of Surveys 21/6/13

Vide Bk. 413 fol. 73 for Original Survey

o Denotes Iron put except stated otherwise. SCALE : 1:1250  
 Note: Bearings are U.T.M. grid based on solar observations Distances are in metres  
 PLAN of 3 Parcels of land coloured pink in the Ward of Siparia  
 Containing together two point zero two four three hectares  
 Surveyed by me, with due authority, in June 2012  
 Certified correct in accordance with Regulation 25 (1) of the Land Surveyors' Regulations 1998.

Checked by *[Signature]* 2/3/13 *[Signature]*

Entered on ..... Trinidad & Tobago Land Surveyor 24<sup>th</sup> December 2012