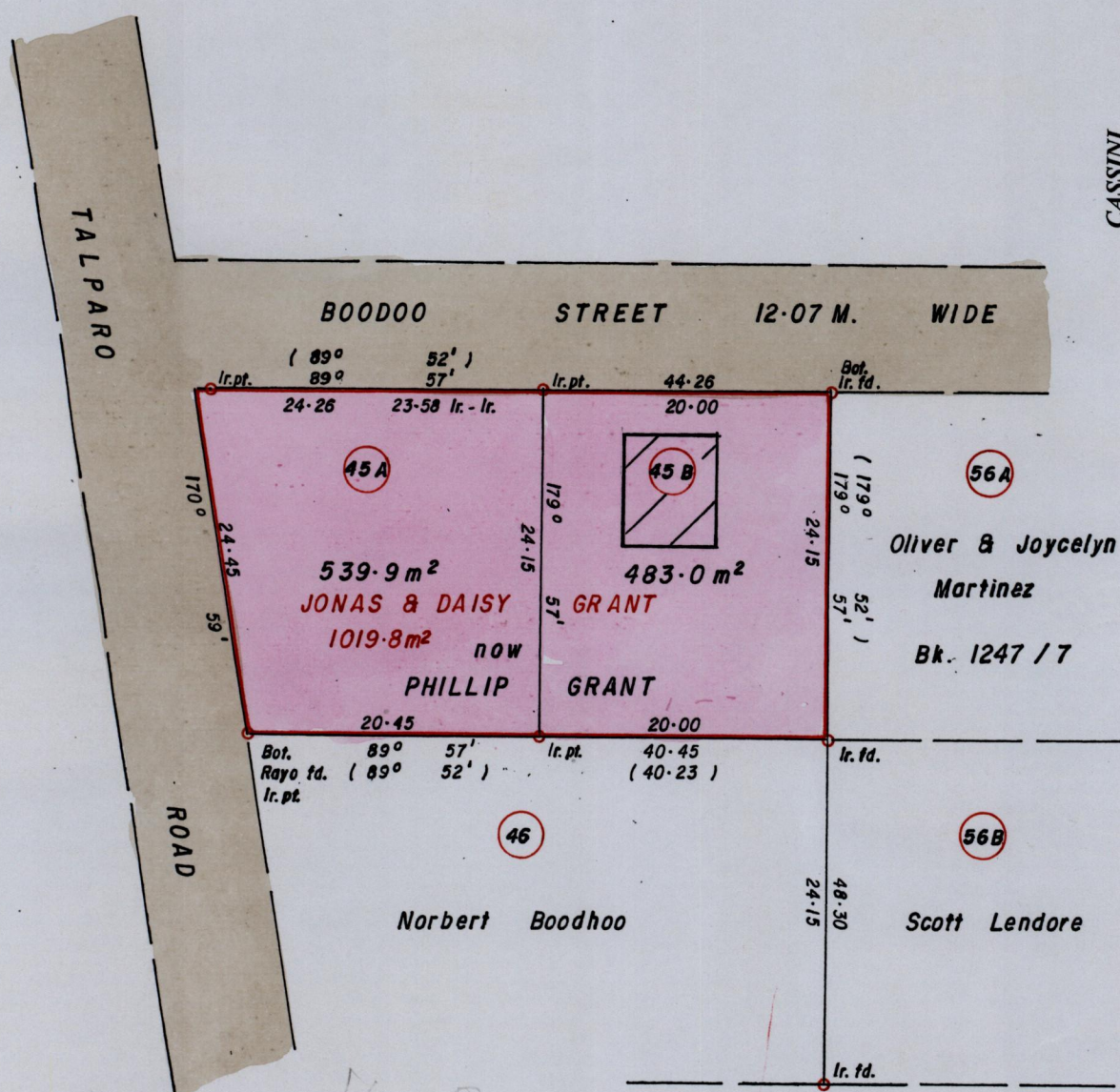
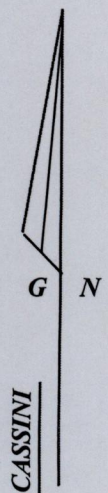


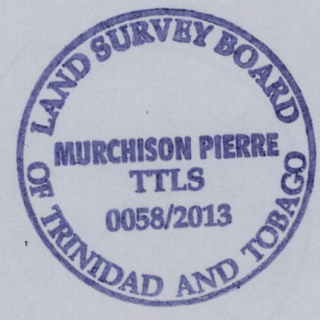
R.P.O. Vol. 21 Fol. 113
C.T. Vol. 3415 Fol. 55

Ward of San Rafael
County of St. George
Cadastral Sheet 24F, D.5.E.
4/c



Orig Bk. 8 fol. 188

See K.G 51



Approved *[Signature]*
Director of Surveys 2013.2.20

Bearings are based on Solar Observations
SCALE 1/500
Distances are in METRES

Note: To Obtain compass bearings add 8 minutes

PLAN of 2 Parcels of land coloured PINK in the Ward of San Rafael
Containing together one thousand and twenty two point nine square metres
Surveyed by me, with due authority, in November 2000
Certified correct in accordance with Regulation 25 (1) of the Land Surveyors' Regulations 1998.

Checked by *[Signature]* *[Signature]*
Entered *[Signature]*
Trinidad and Tobago Land Surveyor. 28th January, 2013