

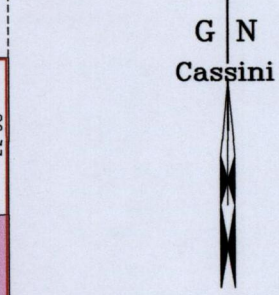
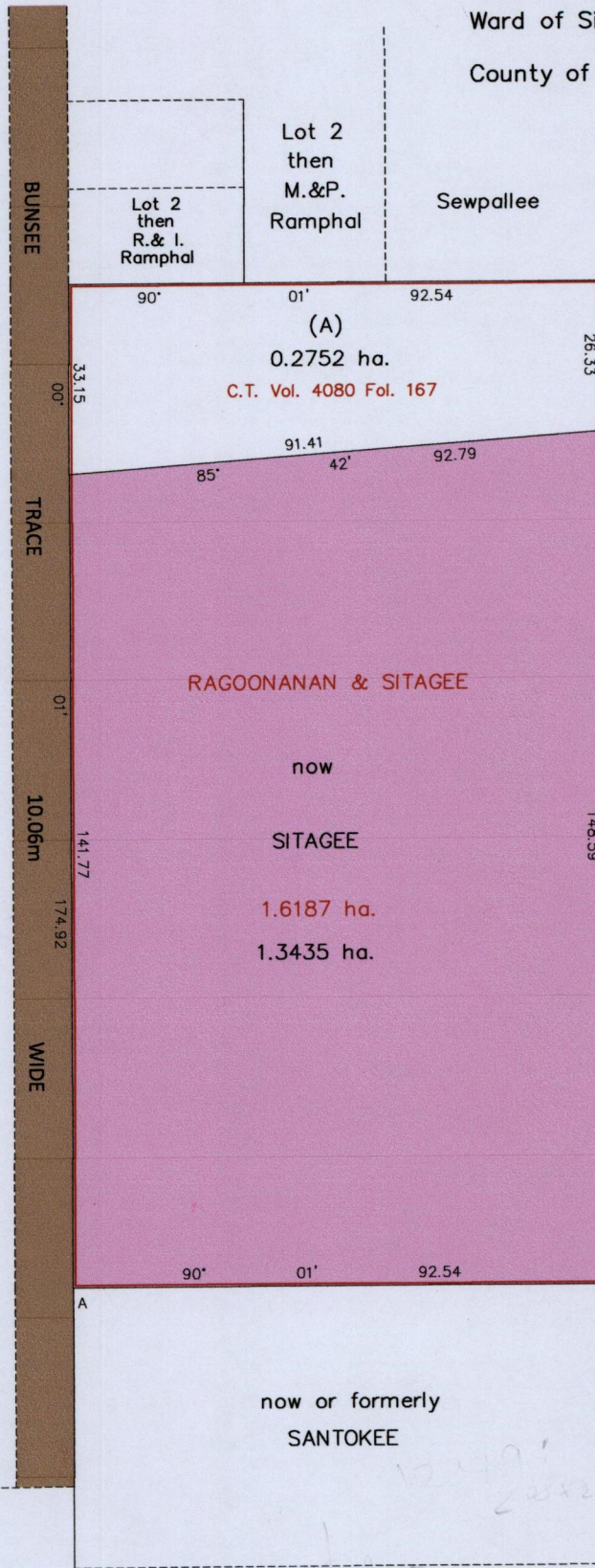
R.P.O. Vol.145 Fol.327

C.T. Vol.1438 Fol.213

Process ID # 5193G

Ward of Siparia.

County of St. Patrick.



Orig Bk. 397: 286

Bk.1256 Fol. 65

Approved.....
Director of Surveys. # 19/6/10

GPS: WGS 84 (Zone 20) reading at A
N 1119723 E 673311 Accuracy (+/-3.0m)

SCALE: 1/1250

Bearings are based on solar observations Distances are in Metres

Plan of one point six one eight seven hectares originally transferred to
RAGOONAN & SITAGEE showing a portion coloured pink and containing one point three four three five hectares
being the remainder after one previous transfer of another portion of the land,

In accordance with Regulation 25 (1) of the Land Surveyors' Regulations 1998,
I certify that this plan represents the remaining portion.

Checked by.....

Entered on Trinidad & Tobago Land Surveyor2013

Handwritten notes on the left side of the page:

- 1163:168
- 1233:44
- 935:61
- 935:69
- 1249:209
- 1249:52
- 1278:135
- 1329:82

Handwritten notes on the right side of the page:

- 1052/10
- 1249:209
- 1256:65
- 397:286