

PROCESS ID # A0928  
R.P.O. Vol. 27 Fol. 151

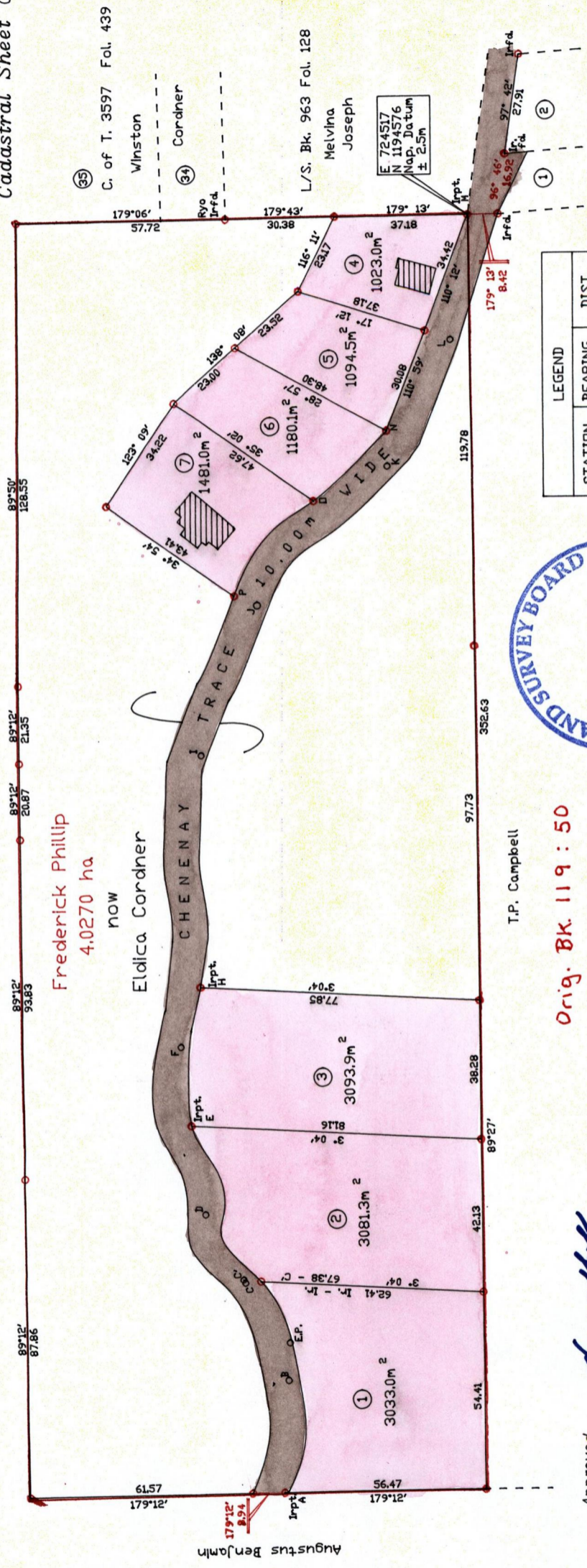
Ward of Toco  
County of St. David  
Cadastral Sheet C.5.M. 6F  
2/b

1652

40

Fred Phillip

Frederick Phillip  
4.0270 ha  
now  
Eldica Cordner



STATION	LEGEND		DIST.
	BEARING		
IrptA - B	92°26'		30.84
B - C	65°53'		29.72
C - C'	59°43'		1.00
C - D	59°43'		21.99
D - E	81°46'		25.00
E - F	81°46'		21.86
F - H	108°38'		17.41
H - I	90°11'		63.81
I - J	110°37'		44.30
J - K	133°27'		52.79
K - L	116°35'		39.49
L - IrptM	98°46'		35.15
P - D	130°12'		34.24
D - N	136°34'		28.09



Orig. Bk. 119 : 50

T.P. Campbell

SCALE 1/1500

Distances are in metres

Note: To obtain Cassini Grid +18 minutes

PLAN of 7 Parcels of land coloured pink in the Ward of Toco  
Containing together one point three nine eight six hectares  
Surveyed by me with due authority in April 2008 and July 2010  
Certified correct in accordance with Regulation 25(1) of the Land Surveyors Regulations 1998

Approved  
*Samuel Higgs*  
Director of Surveys & Titles

Checked by.....  
*M. H. Higgs*  
Entered.....  
*M. H. Higgs*  
Trinidad & Tobago Land Surveyor. 2011. Higgs. 2011. 3



017/CS 91

ALONG CENTRELINE OF CHENENAY TRACE

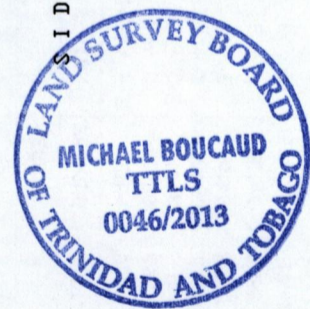
8.0	21.86	2.0	F
10.0	0.0	0.0	E
10.0	25.00	0.0	E
6.0	13.00	4.0	E
4.0	6.0	6.0	D
5.0	0	5.0	D
5.0	21.99	5.0	D
10.0	13.0	0.0	C
5.03	1.00	4.97	C
5.7	29.72	4.3	C
4.0	15.00	6.0	B
7.0	0	3.0	B
7.0	30.84	3.0	B
6.0	20.00	4.0	A
5.0	15.00	5.0	A
6.0	10.00	4.0	A
8.94	0.00	0.0	A

ALONG CENTRELINE OF CHENENAY TRACE

0.0	35.15	10.0	L
7.5	0.00	2.5	L
7.5	39.49	2.5	L
5.0	10.00	5.0	K
6.5	0.0	3.5	K
6.5	52.79	3.5	K
11.0	0.0	0.0	J
6.0	0	4.0	J
6.0	44.30	4.0	J
7.0	17.0	3.0	I
8.0	0.0	2.0	I
8.0	63.81	2.0	I
10.0	60.00	0	H
10.0	27.00	0.0	H
8.0	15.00	2.0	H
10.0	0	0.0	H
10.0	17.41	0.0	F
8.0	0.00	0.0	F

ALONG CENTRELINE OF CHENENAY TRACE

0.00	34.24	0.00	P
3.00	22.00	0.00	P
4.00	16.00	0.00	P
3.00	11.00	0.00	P



*Michael Boucaud*  
25/01/2013

1652/40